



**MICRO SWITCH**

FREEPORT, ILLINOIS, U.S.A.  
A DIVISION OF HONEYWELL

FED. MFG. CODE 91929

# SWITCH - BASIC

CATALOG LISTING

## BZ - 2RM22 - A2

### AKD1000

BZ-2RM22-A2  
PAGE 1 OF 1

M

DRAWING NUMBER

9

ISSUE

REPLACES

RELEASE NO.

CHECK

18 JAN 06

RJ

CHECK

15 OCT 63

CHECK

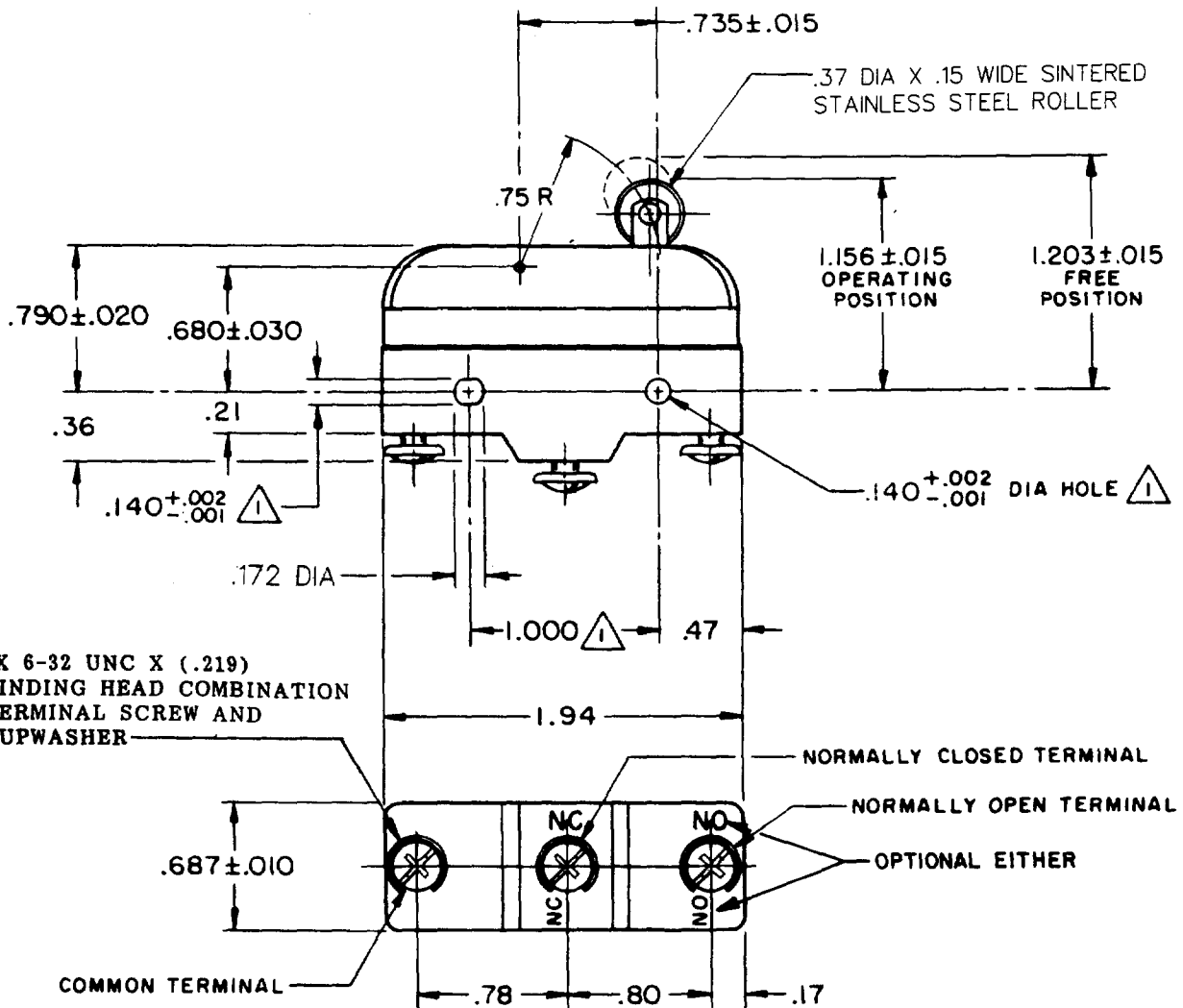
15 OCT 63

CHECK

30 SEP 63

CHECK

30 SEP 63



REVISIONS

A	CO17410	6 CH	30 SEP 63
B	CO23414	8 CH	13 NOV 67
C	CO44382	4 CH	7 AUG 71
D	CO73287-J	10 CH	22 NOV 93
E	CO75204-B	10 CH	1 FEB 94
F	CO77588	10 CH	29 MAR 94
G	CO93346	10 CH	10 SEP 98
H	CO018004	10 CH	18 JAN 06

NOTE

⚠ MOUNTING HOLES WILL ACCEPT PINS OR SCREWS OF .139 MAX DIA ON 1.000±.002 CENTERS

THIS DRAWING COVERS A PROPRIETARY ITEM AND IS THE PROPERTY OF MICRO SWITCH, A DIVISION OF MINNEAPOLIS-HONEYWELL REGULATOR CO. THIS DRAWING IS NOT TO BE COPIED OR USED WITHOUT THE APPROVAL OF MICRO SWITCH.

### CHARACTERISTICS

OPERATING FORCE-----19 OZ MAX

RELEASE FORCE-----6 OZ MIN

PRETRAVEL-----.078 MAX

DIFFERENTIAL TRAVEL-----.001 - 0.11

OVERTRAVEL-----.078 MIN

### ELECTRICAL DATA

CONTACT ARRANGEMENT  
S P D T

-L96- 15 A - 125, 250, OR 480 VAC  
1/2 A - 125 VDC; 1/4 A - 250 VDC  
1/8 HP - 125 VAC; 1/4 HP - 250 VAC

-L288-

-L306-

-L315-

16A 250V ~ T85 5E4

### SCALE FULL

DO NOT SCALE PRINT

UNLESS OTHERWISE NOTED  
DIMENSIONS ARE IN INCHES

**TOLERANCES ARE:**

ONE PLACE	(.0)	±.030
TWO PLACE	(.00)	±.015
THREE PLACE	(.000)	±.005
ANGLES		±

WEIGHT .077 LB

FORMTEK

FO-80378

DRAWN

GCH