

SPECIFICATIONS

Mechanical

Contact Engagement Force : 0.34 Kgf/ Pin max.
Contact Separation Force : 0.021 Kgf/ Pin min.
Durability : 500 Cycles

Electrical

Voltage Rating: 240V
Current Rating: 1A
Contact Resistance: 25 mW max.
Dielectric Withstanding Voltage: 750V AC/1 min.
Insulation Resistance: 5000MW

Physical

Housing: Thermoplastic, UL 94V-0 rated in PC99 Color
Contact: Copper alloy
Plating: See "ORDERING INFORMATION"
Solder Pad: Copper alloy
Operating Temperature: -55 to +105

D-SUB Connector

DS Series

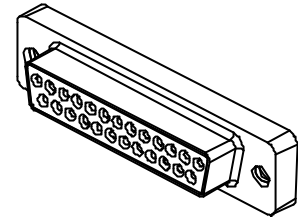
Right Angle, SMT, Female Type

25 Pos.

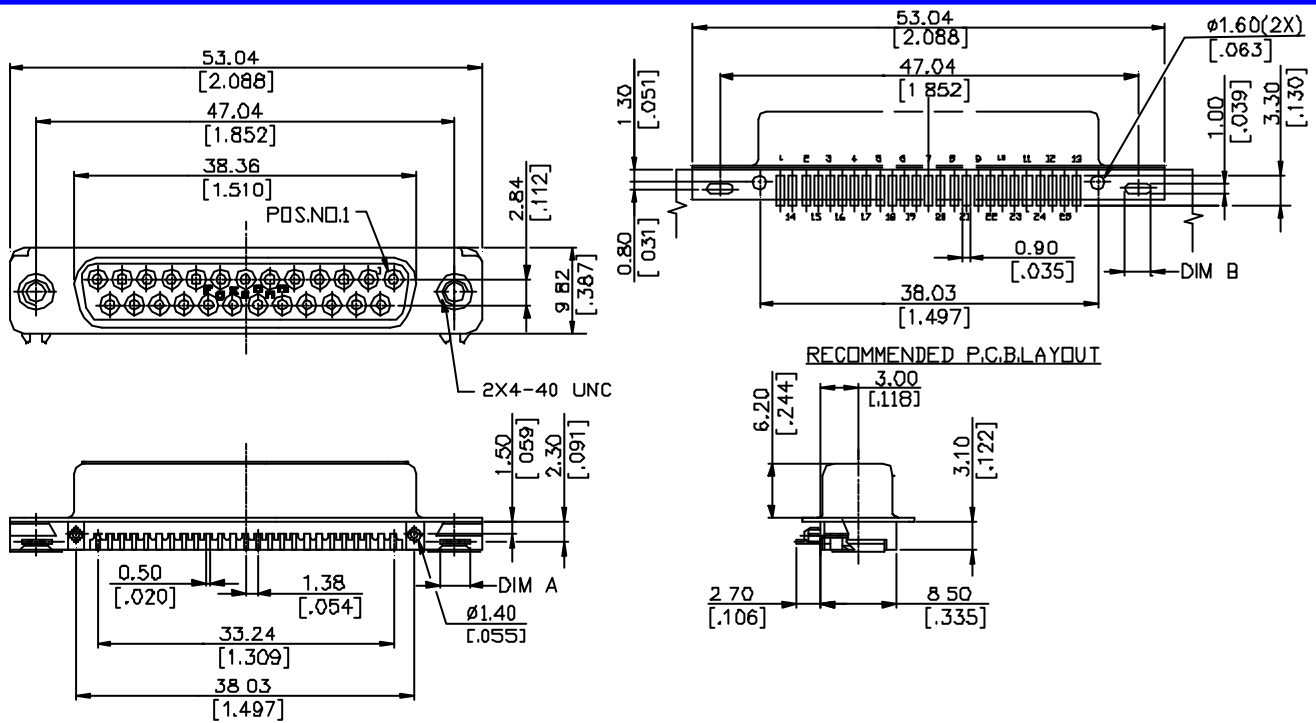
Center Height 3.00 mm

Recommended PCB's

Thickness 1.6 mm



DRAWING



ORDERING INFORMATION

PRODUCT. NO. : **DS0139*WH*(HT/TR)**

D-SUB SMT Series
Terminator Type
0 = Straight Angle
Contact Design Type
1 = Female
NO. Of Contact POS.
3 = 25 POS.

Packing Code
Extension Code
Contact Area Plating
1 = Gold Flash
6 = 10u" Gold Plating
7 = 15u" Gold Plating
Body Length

DS0139*-WH37	3.10 [.122]	3.10 [.122]	BURGUNDY
DS0139*-WH36	3.35 [.132]	3.00 [.118]	BURGUNDY
P/N	DIM. A	DIM. B	COLOR