



SMA Female Connector Solder Attachment 0.062 inch
 End Launch PCB, .020 inch x .010 inch Contact

TECHNICAL DATA SHEET PE4543

SMA Female Connector Solder Attachment 0.062 inch End Launch PCB, .020 inch x .010 inch Contact

Configuration

Connector	SMA Female
Connector Interface Type	0.062 inch End Launch
Cable Attachment Method (Shield/Contact)	Solder
Body Style	Straight

Electrical Specifications

Impedance, Ohms	50
-----------------	----

Mechanical Specifications

Size

Length, in [mm]	0.562 [14.27]
Width/Dia., in [mm]	0.375 [9.53]
Height, in [mm]	0.312 [7.92]
Weight, lbs [g]	0.005 [2.27]

Connector

Type	SMA Female
Contact Material and Plating	Gold
Body Material and Plating	Brass, Gold
Dielectric Type	PTFE

Compliance Certifications (visit www.Pasternack.com for current document)

RoHS Compliant	Yes
----------------	-----

Plotted and Other Data

Notes:	Values at 25 °C, sea level
--------	----------------------------

SMA Female Connector Solder Attachment 0.062 inch End Launch PCB, .020 inch x .010 inch Contact from Pasternack Enterprises has same day shipment for domestic and International orders. Our RF, microwave and fiber optic products maintain a 99% availability and are part of the broadest selection in the industry.

Click the following link (or enter part number in "SEARCH" on website) to obtain additional part information including price, inventory and certifications: [SMA Female Connector Solder Attachment 0.062 inch End Launch PCB, .020 inch x .010 inch Contact PE4543](http://www.pasternack.com/sma-female-standard-0.062-end-launch-connector-pe4543-p.aspx)

URL: <http://www.pasternack.com/sma-female-standard-0.062-end-launch-connector-pe4543-p.aspx>

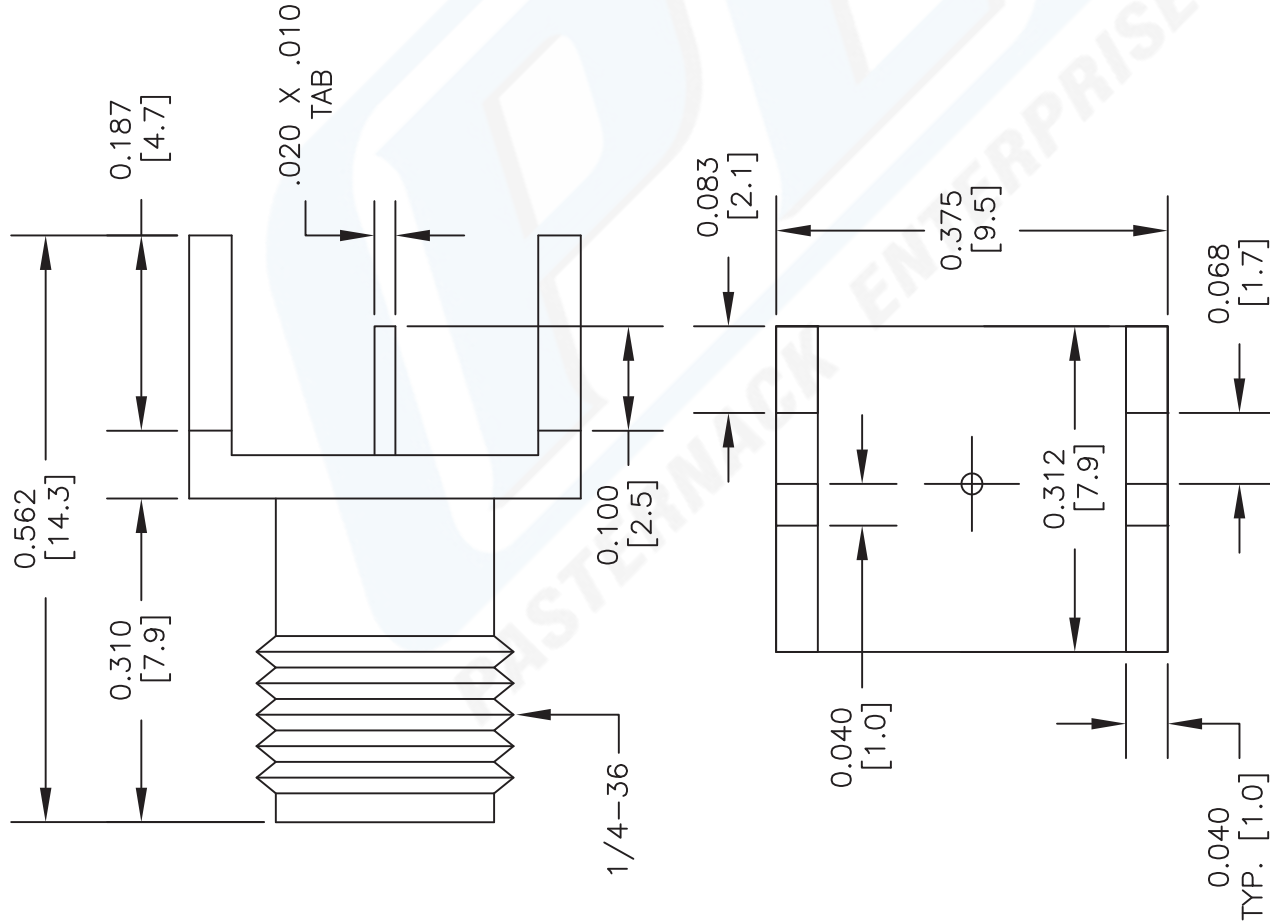
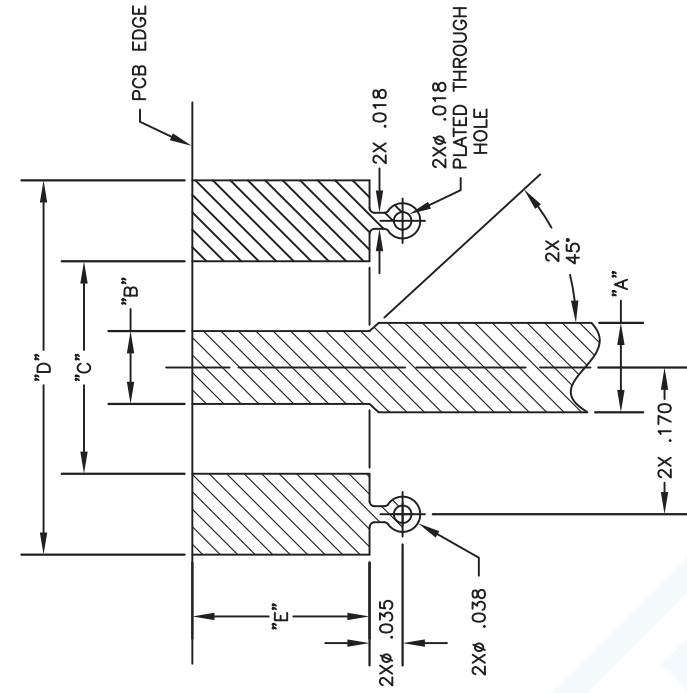
The information contained in this document is accurate to the best of our knowledge and representative of the part described herein. It may be necessary to make modifications to the part and/or the documentation of the part, in order to implement improvements. Pasternack reserves the right to make such changes as required. Unless otherwise stated, all specifications are nominal.



PE4543 CAD Drawing

SMA Female Connector Solder Attachment 0.062 inch End

Launch PCB, .020 inch x .010 inch Contact



PART NO.	BASE WIDTH	BOARD THICK	MOUNTING CHART				
			"A"	"B"	"C"	"D"	"E"
PE4542	.375	.062	.103	.090	.250	.440	.200
PE4543	.375	.062	.103	.090	.250	.440	.200
PE44205	.375	.047	.083	.075	.250	.440	.200
PE44206	.375	.031	.050	.045	.250	.440	.200
PE44207	.375	.042	.083	.075	.250	.440	.200
PE44208	.375	.047	.083	.075	.250	.440	.200
PE44134	.250	.042	.103	.070	.170	.380	.200

1. SOLID COPPER GROUND PLANE REQUIRED ON BOTTOMSIDE OF CIRCUIT BOARD.

NOTES:
 1. UNLESS OTHERWISE SPECIFIED ALL DIMENSIONS ARE NOMINAL.
 2. ALL SPECIFICATIONS ARE SUBJECT TO CHANGE WITHOUT NOTICE AT ANY TIME.
 3. DIMENSIONS ARE IN INCHES [mm].
 4. FITS MIL-C-17 AND EQUIVALENT CABLES.

DWG TITLE
PE4543

PE PASTERNAK
 Pasternack Enterprises, Inc.
 P.O. Box 16759 | Irvine | CA | 92623
 Phone: (949) 261-1920 | Fax: (949) 261-7451
 Website: www.pasternack.com | E-Mail: sales@pasternack.com

FSCM NO. 53919

CAD FILE 032513-A SCALE N/A SIZE A 2233