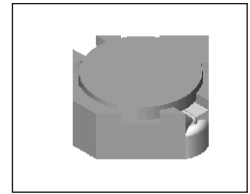


# SMT Power Inductor

## SILM320A Type

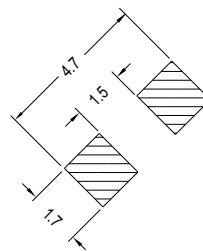
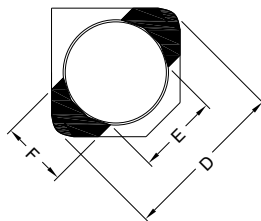
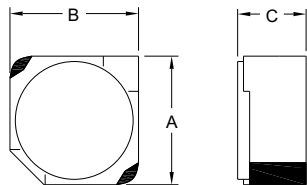
### Features

- RoHS compliant.
- Low profile (2.0mm max. height) SMD type.
- Magnetically shielded, suitable for high density mounting.
- Self-leads, suitable for high density mounting.
- High energy storage and low DCR.
- Provided with embossed carrier tape packing.
- Ideal for power source circuits, DC-DC converter, DC-AC inverters inductor applications.
- In addition to the standard versions shown here, customized inductors are available to meet your exact requirements.



### Mechanical Dimension:

#### RECOMMENDED PAD PATTERNS



UNIT:mm/inch  
A = 3.2 / 0.126 Max.  
B = 3.2 / 0.126 Max.  
C = 2.0 / 0.079 Max.  
D = 4.0 / 0.157 Max.  
E = 2.2 / 0.087  
F = 1.0 / 0.039

### Electrical Characteristics: 25°C: 100KHz, 0.1V

PART NO.	$L^1$ ( $\mu$ H)	DCR (m $\Omega$ ) MAX	$I_{sat}^2$ (A dc)	$I_r^3$ (A dc)
SILM320A - 1R7	1.7	44	1.85	2.20
SILM320A - 2R2	2.2	60	1.60	1.90
SILM320A - 3R3	3.3	86	1.45	1.55
SILM320A - 4R7	4.7	140	1.20	1.20
SILM320A - 6R3	6.3	160	1.05	1.15
SILM320A - 100	10.0	245	0.85	0.90
SILM320A - 150	15.0	345	0.70	0.64

1. Tolerance of inductance:  $\pm 30\%$ .

2.  $I_{sat}$  is the DC current which cause the inductance drop 35% typical of its nominal inductance without current.

3.  $I_r$  is the DC current which cause the surface temperature of the part increase less than 45°C.

4. Operating temperature : -20°C to 105°C (including self-temperature rise).



DELTA ELECTRONICS, INC.

(TAOYUAN PLANT CPBG) 252, SAN YING ROAD, KUEISAN INDUSTRIAL ZONE, TAOYUAN SHIEN, 333, TAIWAN, R.O.C.

TEL: 886-3-3591968; FAX: 886-3-3591991

<http://www.deltawww.com>