



Part Number : CAD06W7262

6 Pins Wingblock(Cover) Without Switch Connector, SMT Mounting

- Cover
- With card guide and card stop
- Total height is 2.6mm

1. Material:

Contact: Phosphor Copper

Wing: Stainless steel

Insulator: Glass filled high temperature Engineering plastics UL94V-0, black

2. Finish:

Contact: 0.38 micron Min gold plating at mating area, 1.27-2.54

micron matte tin at solder tail, 1.27-2.54 micron nickel under plated.

Wing: 2.0 micron bright tin and 1.27-2.54 micron nickel under plate

3. Electrical specifications:

Voltage rating: 250 Vac min

Current rating: 2.0 A min

Dielectric strength: 1000 Vac for 1 minute min

Insulation resistance: 1000 MEG ohm min

Contact resistance: 30 milliohm max

Operation temperature: -55°C to +125°C

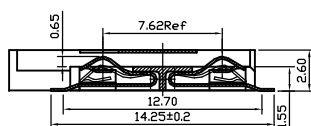
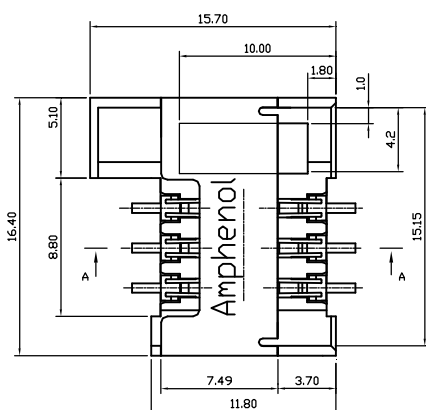
4. Mechanical specifications:

Durability: 5,000 cycles

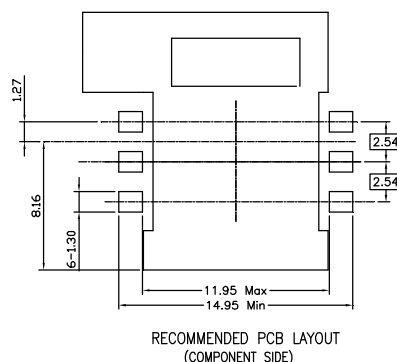
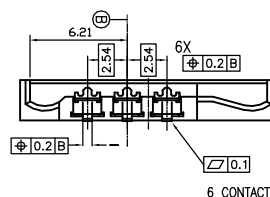
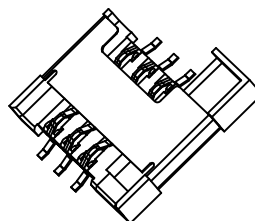
Normal force at mated position: $0.5N \pm 0.2N$

5. Packaging:

Parts to be packaged in anti-static tape and reel. All packaging materials to be approved by Amphenol engineering.



SECTION A-A



RECOMMENDED PCB LAYOUT
(COMPONENT SIDE)