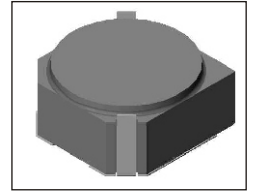


SMT Power Inductor

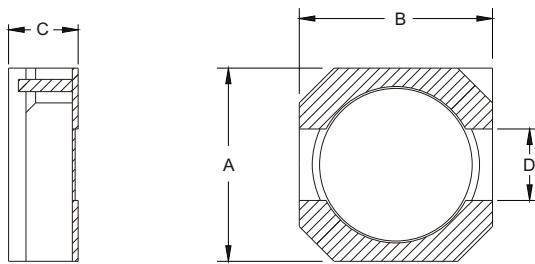
SIL720 & SIL725 Type

Features

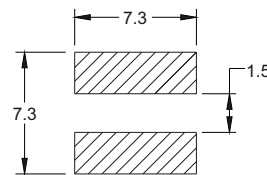
- RoHS compliant.
- Small size (6.6mm*6.6mm), Low profile, SMD type.
- Magnetically shielded, suitable for high density mounting.
- High energy storage and low DCR.
- Provided with embossed carrier tape packing.
- Ideal for power source circuits, DC-DC converter, DC-AC inverters inductor application.
- In addition to the standard versions shown here, customized inductors are available to meet your exact requirements.



Mechanical Dimension:



RECOMMENDED PAD PATTERNS



UNIT:mm/inch
 A = 7.0 / 0.276 Max.
 B = 7.0 / 0.276 Max.
 D = 2.0±0.1 / 0.079±0.004

Electrical Characteristics: 25°C: 100KHz, 0.1V

PART NO.	L ¹ (uH)	DCR (Ω) MAX	I _{rated} ² (A dc)	HEIGHT "C" (mm) MAX
SIL720 - 1R0	1.0	0.020	5.50	2.0
SIL720 - 1R5	1.5	0.027	4.50	2.0
SIL720 - 2R0	2.2	0.040	3.80	2.0
SIL720 - 2R7	2.7	0.049	3.30	2.0
SIL720 - 3R3	3.3	0.065	2.90	2.0
SIL720 - 4R4	4.4	0.070	2.40	2.0
SIL720 - 100	10.0	0.150	1.80	2.0
SIL720 - 470	47.0	0.720	0.80	2.0
SIL720 - 101	100.0	1.400	0.55	2.0
SIL725 - 3R3	3.3	0.043	2.90	2.5
SIL725 - 4R1	4.1	0.048	2.60	2.5
SIL725 - 100	10.0	0.150	1.60	2.5
SIL725 - 220	22.0	0.330	1.10	2.5

1. Tolerance of inductance : ± 30%.
2. I_{rated} is the DC current which cause the inductance drop less than 35% of its nominal inductance without current and the surface temperature of the part increase less than 45°C.
3. Operating temperature: -20°C to 105°C (including self-temperature rise).



DELTA ELECTRONICS, INC.

(TAOYUAN PLANT CPBG) 252, SAN YING ROAD, KUEISAN INDUSTRIAL ZONE, TAOYUAN SHIEN, 333, TAIWAN, R.O.C.

TEL: 886-3-3591968; FAX: 886-3-3591991

<http://www.deltaww.com>