

**PLEASE CHECK WWW.MOLEX.COM FOR LATEST PART INFORMATION**

**Part Number:** [0850131677](#)  
**Status:** **Active**  
**Overview:** [din\\_41612](#)  
**Description:** 2.54mm (.100") Pitch DIN 41612 Header, Through Hole, Vertical, Style R Reverse, 0.6µm (24µ") Selective Gold (Au), 64 Circuits, Lead free

**Documents:**

[3D Model](#) [Product Specification PS-85013-0001 \(PDF\)](#)  
[Drawing \(PDF\)](#) [RoHS Certificate of Compliance \(PDF\)](#)

**Agency Certification**

CSA LR19980  
 UL E29179

**General**

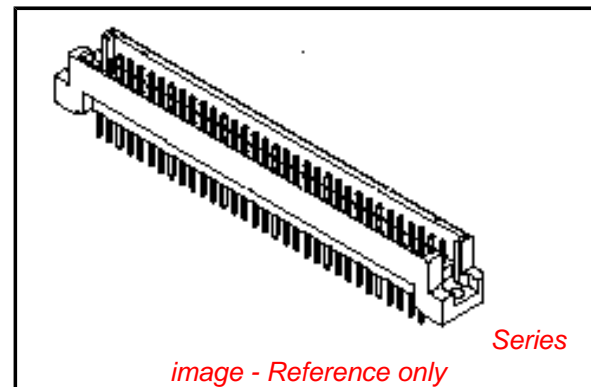
Product Family Backplane Connectors  
 Series [85013](#)  
 Application Backplane  
 Component Type PCB Header  
 Overview [din\\_41612](#)  
 Product Name IEC 603-2/DIN 41612  
 Style R

**Physical**

Circuits (Loaded) 64  
 Circuits (maximum) 96  
 Circuits Detail Rows A & C  
 Durability (mating cycles max) 400  
 First Mate / Last Break No  
 Flammability 94V-0  
 Guide to Mating Part No  
 Keying to Mating Part Yes  
 Number of Columns 32  
 Number of Pairs Open Pin Field  
 Number of Rows 3  
 Orientation Vertical  
 PC Tail Length (in) 0.524 In  
 PC Tail Length (mm) 13.30 mm  
 PCB Locator No  
 PCB Retention Yes  
 PCB Thickness Recommended (in) 0.062 In  
 PCB Thickness Recommended (mm) 1.60 mm  
 Packaging Type Tray  
 Pitch - Mating Interface (in) 0.100 In  
 Pitch - Mating Interface (mm) 2.54 mm  
 Pitch - Term. Interface (in) 0.100 In  
 Pitch - Term. Interface (mm) 2.54 mm  
 Plating min: Mating (µin) 24  
 Plating min: Mating (µm) 0.6  
 Surface Mount Compatible (SMC) No  
 Temperature Range - Operating -55°C to +125°C

**Electrical**

Current - Maximum per Contact 2.5A  
 Data Rate 622.0 Mbps  
 Voltage - Maximum 1000V (RMS)



**EU RoHS**

**ELV and RoHS  
 Compliant**  
**REACH SVHC  
 Not Reviewed**  
**Halogen-Free  
 Status  
 Not Reviewed**

**China RoHS**



**Need more information on product  
 environmental compliance?**

Email [productcompliance@molex.com](mailto:productcompliance@molex.com)  
 For a multiple part number RoHS Certificate of  
 Compliance, [click here](#)

Please visit the [Contact Us](#) section for any  
 non-product compliance questions.

**Search Parts in this Series**

[85013Series](#)

**Mates With**

[85042](#) DIN 41612 Receptacle . [85052](#) DIN  
 41612 Header

**Material Info**

**Reference - Drawing Numbers**

Product Specification

Sales Drawing

PS-85013-0001

SD-85013-1677, SDA-85013-0001, SDA-85013-1677

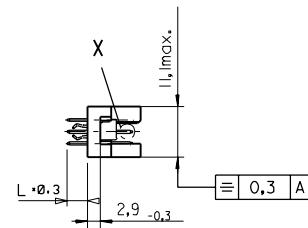
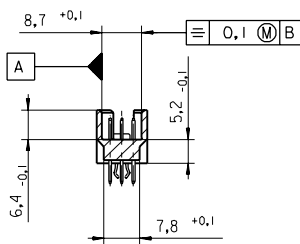
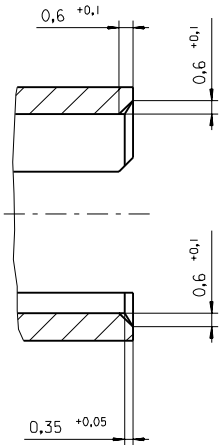
This document was generated on 05/17/2010

**PLEASE CHECK [WWW.MOLEX.COM](http://WWW.MOLEX.COM) FOR LATEST PART INFORMATION**

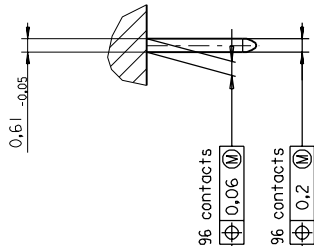


PART NO.  
DWG. NO.

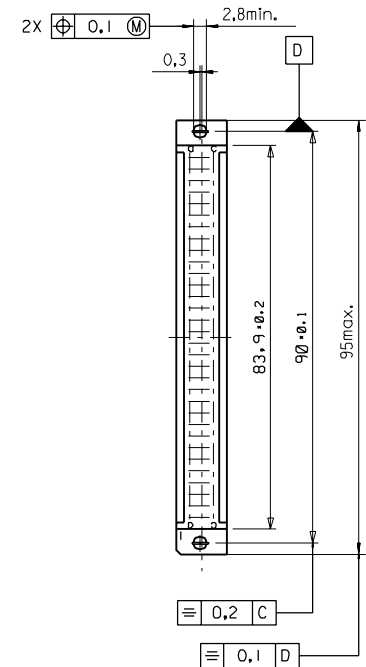
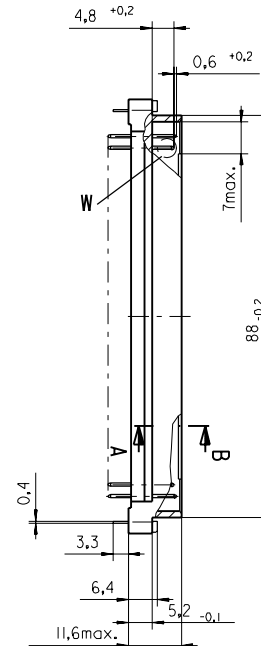
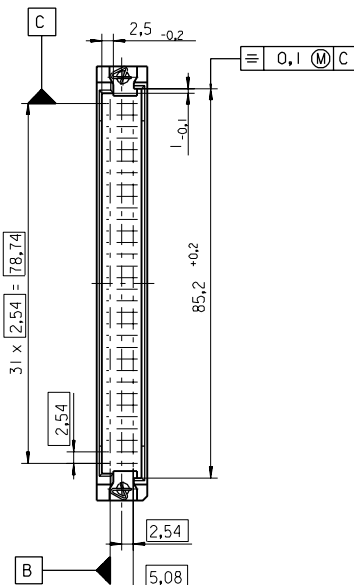
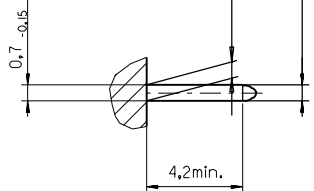
Section A - B  
5:1



View X  
5:1



View W  
5:1



FIRST ANGLE PROJECTION		REVISE ONLY ON CAD SYSTEM		SH.	REV.
UNLESS OTHERWISE SPECIFIED TOLERANCES: ANGULAR $\pm 2^\circ$	INCH	DRWG BY	SIGN	CAD/CAM PROJECT NAME	
	METRIC	Ca		85013000 611	
3 PLACE $\pm$ .	$\pm$	CHK'D BY	SIGN	TITLE	
2 PLACE $\pm$ .	$\pm$	KN		96 pos. Male connector acc. DIN 41612 Style R Dimensions	
1 PLACE $\pm$ .	$\pm$	APP'D BY	SIGN	SHEET NO. DATE	
DRAFT WHERE APPLICABLE MUST REMAIN WITHIN DIMENSIONS				1 OF 95/06/07	
DESIGN DIMENSION <input checked="" type="checkbox"/> MM		SCALE		MOLEX EUROPE	
EQUIVALENT DIMENSION <input type="checkbox"/> MM		: 1		PART NO.	
IF TWO DIMENSIONS ARE SHOWN THE UPPER IS THE DESIGN DIMENSION, LOWER IS SECONDARY				DWG. NO.	
				SDA-85013-0001	
				SIZE	
				B	

