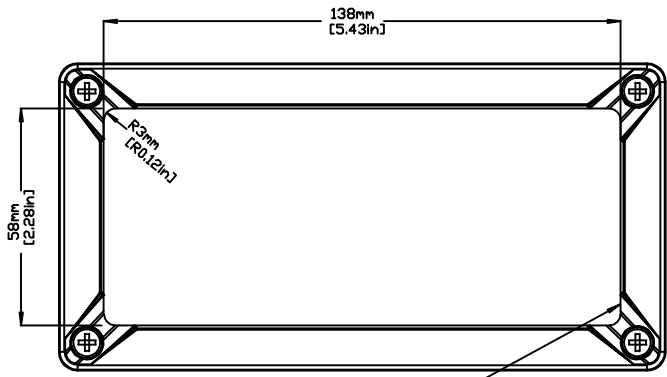
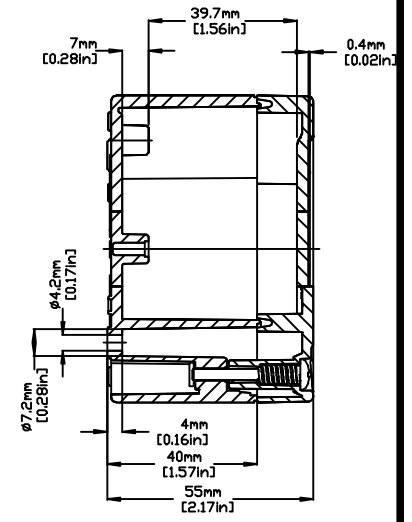
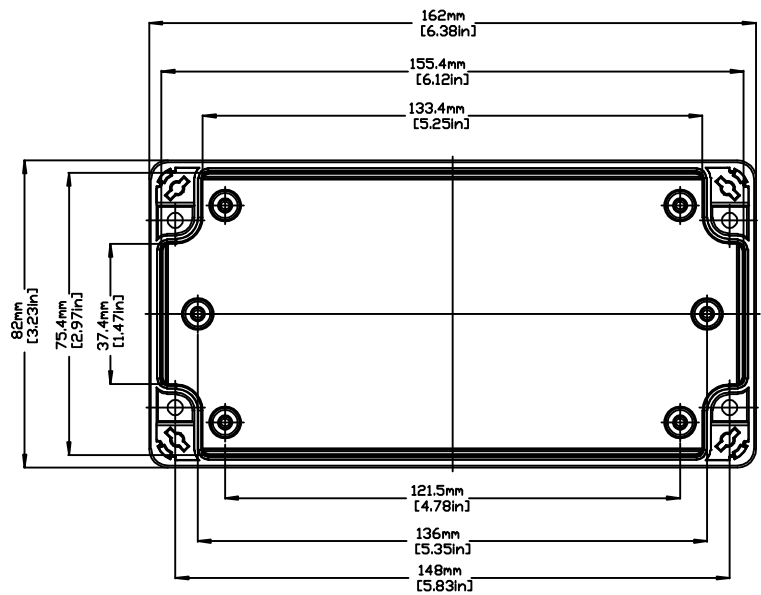


REVISIONS FOR DWG # 3EN-3IS-TG-TG1608_6

REV	CH.NO.	DESCRIPTION	DATE	REVISED BY
-	-	ORIGINAL DESIGN	08/01/11	ROLAND G



T=0.4mm/0.02in
RECESS AREA FOR LABEL



UNLESS OTHERWISE SPECIFIED
 • ALL DIMENSIONS ARE IN MILLIMETERS
 • THIRD ANGLE PROJECTION

• TOLERANCE

XX	±	XX mm
XX.X	±	XX mm
XX.XX	±	XX mm
ALL	±	XX mm

This Drawing is the property of
Altrech Corp.
 35 Royal Road
 Flemington NJ 08822-6000
 (908) 806-9400 · Fax (908) 806-9490

AND IS A CONFIDENTIAL DISCLOSURE
 LENT WITHOUT CONSIDERATION OTHER
 THAN THE BORROWER'S AGREEMENT
 THAT IT SHALL NOT BE REPRODUCED,
 COPIED, LENT, OR DISPOSED OF
 DIRECTLY OR INDIRECTLY NOR USED
 FOR ANY PURPOSE OTHER THAN THAT
 FOR WHICH IT IS SPECIFICALLY
 FURNISHED.

TITLE: ABS/POLYCARBONATE ENCLOSURE TG 1608-6		DRAWING NO.: 3EN-3IS-TG-TG1608_6		REV.: -
DRAWN BY: ROLAND GYORGYPAL	08/01/2011	SCALE: -		SHEET: 1 OF: 1
CHECKED BY: JEFF ROYE	08/01/2011			
RELEASED BY: LASZLO G.	08/01/2011			