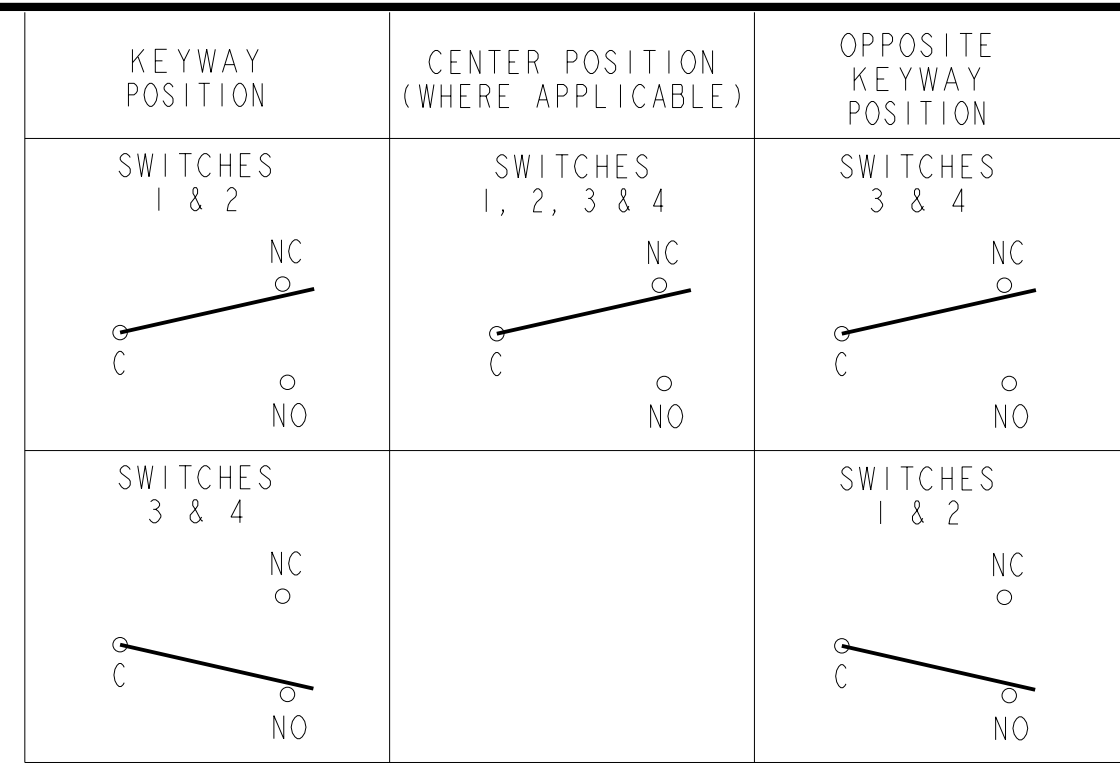


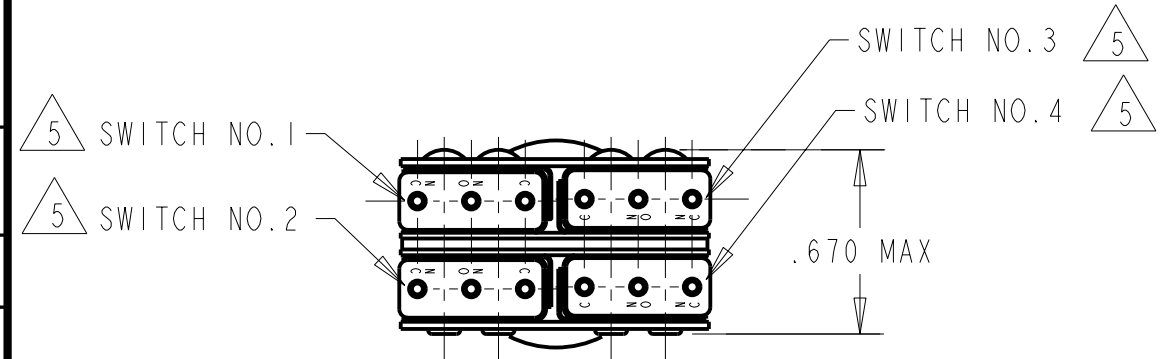
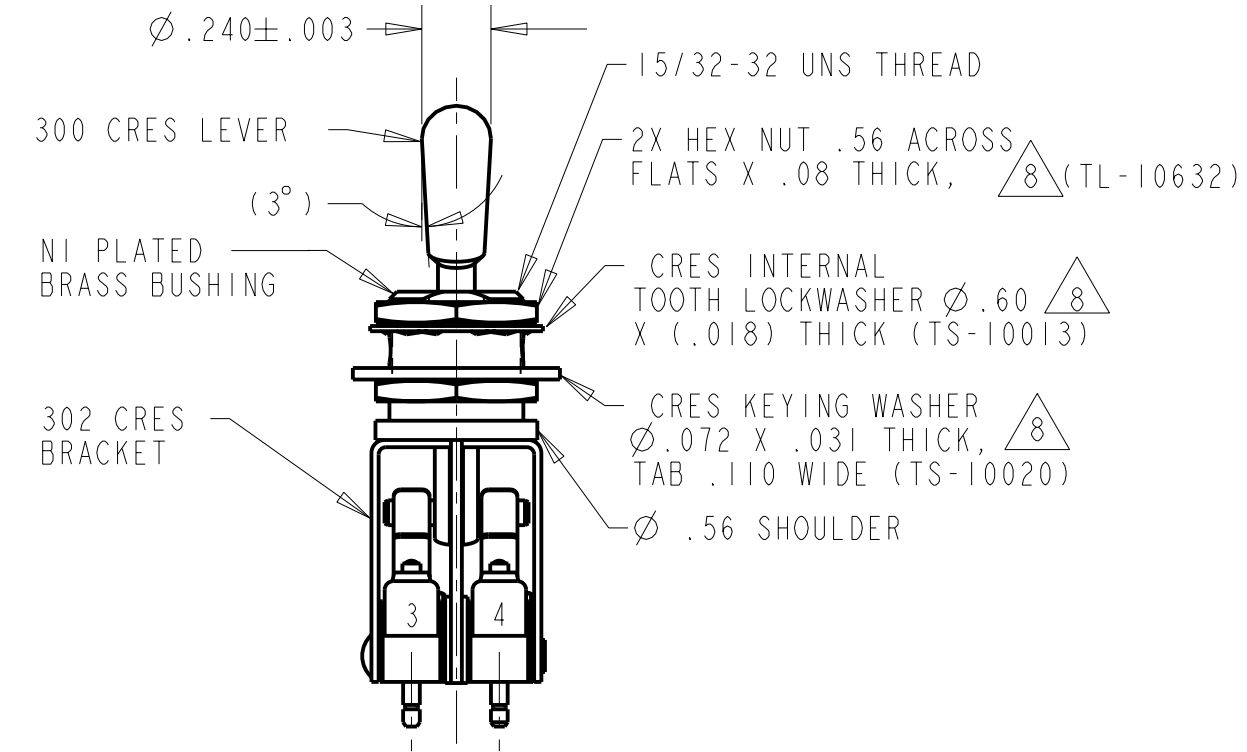
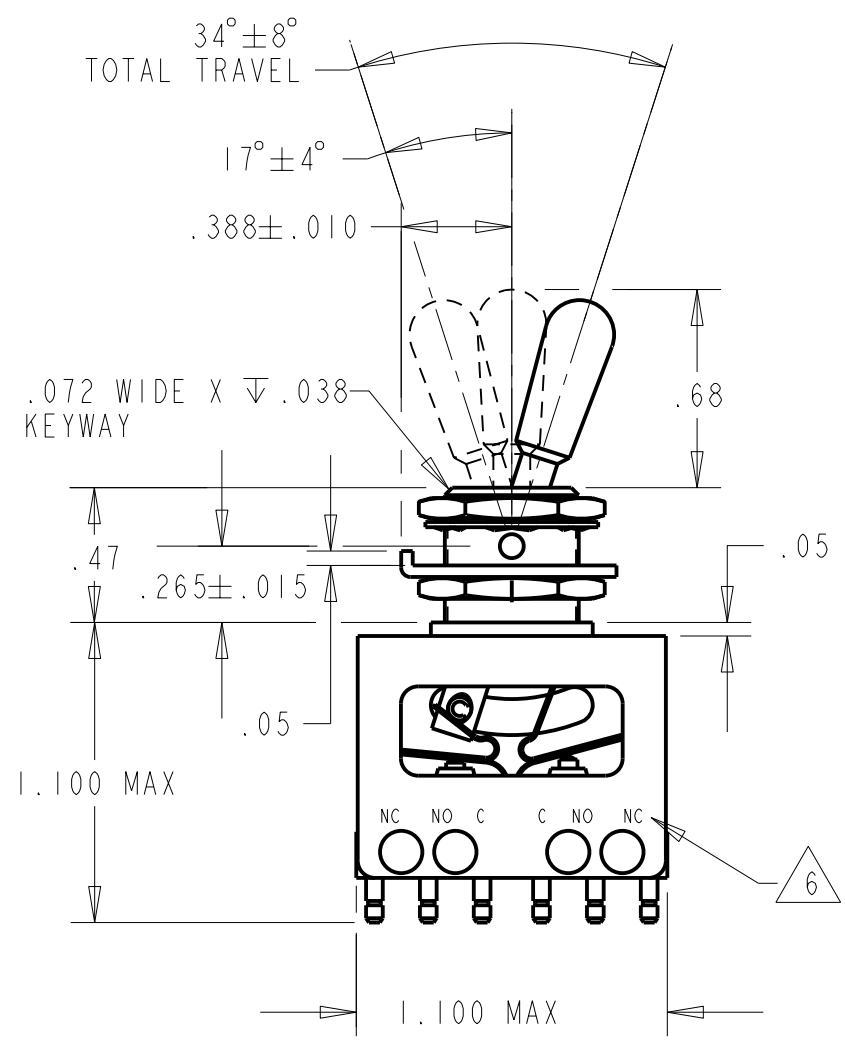
M 64AT43 SERIES CHART 1

CATALOG LISTING	KEYWAY POSITION		CENTER POSITION		OPPOSITE KEYWAY POSITION	
	C-NO	C-NC	C-NO	C-NC	C-NO	C-NC
64AT43-1	3,4	1,2	NONE	ALL	1,2	3,4
64AT43-3	3,4	1,2	N/A	N/A	1,2	3,4
64AT43-5	3,4*	1,2*	NONE	ALL	1,2	3,4
64AT43-7	3,4*	1,2*	NONE	ALL	1,2*	3,4*
64AT43-514	3,4	1,2	NONE	ALL	1,2*	3,4*

* ASTERISK DENOTES MOMENTARY POSITION



SPECIFICATION DETAILS:			
STANDARD:		BASIC SWITCHES CONFORM TO (MIL-PRF-8805/98) EXCEPT AS NOTED	
CONSTRUCTION:		UNSEALED	
ENCLOSURE DESIGN		GOLD BIFURCATED CONTACTS	
CONTACT MATERIAL & CONFIGURATION		4X S.P.D.T.	
CIRCUIT CONFIGURATION		H58 TYPE TERMINALS/CONNECTOR	
TERMINATION		.075 LBS MAX	
WEIGHT			
ELECTRICAL CHARACTERISTICS:			
ELECTRICAL RATINGS (MAX LOAD)		VOLTAGE	INDUCTIVE RESISTIVE
-SEA LEVEL		28 VDC	.010 AMP .010 AMP
-50,000 FEET		28 VDC	.010 AMP .010 AMP
DIELECTRIC STRENGTH & INSULATION RES (BASIC SWITCH)		DIELECTRIC STRENGTH	INSULATION RESISTANCE
-BETWEEN TERMINALS AND EXPOSED NON-CURRENT CARRYING METAL		≈ 60 Hz FOR 5 SEC	(500 VDC ±10%)##
-BETWEEN TERMINALS OF MUTUALLY INSULATED CIRCUITS		(SL)1000V RMS, 500 A (MAX LKG) (50,000 FT) 400VRMS#	1000 MEGAOHM MIN
-BETWEEN ALL UNCONNECTED TERMINALS OF THE SAME POLE		(SL)1000V RMS, 500 A (MAX LKG) (50,000 FT) 400VRMS#	1000 MEGAOHM MIN
SWITCH RESISTANCE		N/A	
RECOMMENDATION OR USE IN APPL LESS THAN .5 amps AND/OR 12 volts		ACCEPTABLE	
MECHANICAL CHARACTERISTICS:			
OPERATING FORCE		1.0-5.0 LB (APPLIED .125±.030 FROM END OF LEVER)	
MOUNTING STRENGTH		25 IN-LBS MAX PER MIL-PRF-8805D	
ACTUATOR STRENGTH		25 LBS MAX PER MIL-PRF-8805D	
LIFE:			
MECHANICAL LIFE		100,000 MIN PER MIL-PRF-8805D	
ELECTRICAL LIFE AT FULL RATED LOAD		25,000 MIN PER MIL-PRF-8805D	
ENVIRONMENTAL:			
TEMPERATURE RANGE		-55° C TO +85° C	
ALTITUDE RANGE		SEA LEVEL TO 50,000 FT	
SHOCK		PER MIL-PRF-8805 (SYMBOL M - 100g)	
VIBRATION		PER MIL-PRF-8805 (SYMBOL 2,10-2000 Hz & 15g PEAK)	
MOISTURE RESISTANCE		PER MIL-PRF-8805, (10 DAY TEST)	
THERMAL SHOCK		PER MIL-PRF-8805, (5 CYCLE TEST)	
SALT SPRAY		PER MIL-PRF-8805, (96 HOUR TEST)	



- NOTES
- UNIT INCLUDED 4X "12SX" TYPE BASIC SWITCH
 - SWITCHES DO NOT NECESSARILY OPERATE SIMULTANEOUSLY
 - PLATED TERMINALS WILL ACCEPT "AMP INC." Ø.058 PIN RECEPTACLES
 - DULL FINISH ON LEVER AND BUSHING
 - SWITCH NUMBERS MARKED ON END OF BASIC SWITCHES
 - TERMINALS DESIGNATION MARKED ON BOTH SIDES OF UNIT
 - NOT APPLICABLE, TWO POSITION SWITCH
 - HARDWARE FURNISHED ASSEMBLED WITH SWITCH OR IN PACKET 15PA313-AT PER MIL-PRF-8805
 - REPLACEMENT MOUNTING HARDWARE PACKET 15PA313-AT

64AT43 SERIES CHART 1
 DRAWING NUMBER
 ISSUE
 P.T.C./CAD [20]
 DRAWN
 J.L.H.
 CHECK
 I.I.S.E.P.O.I.
 SAV
 CHECK
 I.I.S.E.P.O.I.
 RELEASE NO. PR-23108
 PAGE 1 OF 1
 REPLACES

REVISIONS	DATE	BY	CHKD
A	203862	J.L.H.	S.E.P.O.I.
B	204179	J.L.H.	S.E.P.O.I.
C	204763	J.L.H.	S.E.P.O.I.
	24JAN02	J.L.H.	S.E.P.O.I.

THIS DRAWING COVERS A PROPRIETARY ITEM AND IS THE PROPERTY OF MICRO SWITCH, A DIVISION OF HONEYWELL. THIS DRAWING IS NOT TO BE COPIED OR USED WITHOUT THE APPROVAL OF MICRO SWITCH.		
MICRO SWITCH a Honeywell Division	ASSEMBLY- TOGGLE SWITCH	CATALOG LISTING 64AT43 SERIES CHART 1
ANSI Y14.5M-1982 APPLIES	FED. MFG. CODE 91929	THIRD ANGLE PROJECTION SCALE 1.5 : 1 DO NOT SCALE PRINT UNLESS OTHERWISE SPECIFIED TOLERANCES ARE ONE PLACE (.0) ±.030 TWO PLACES (.00) ±.015 THREE PLACES (.000) ±.005 ANGLES ± WEIGHT