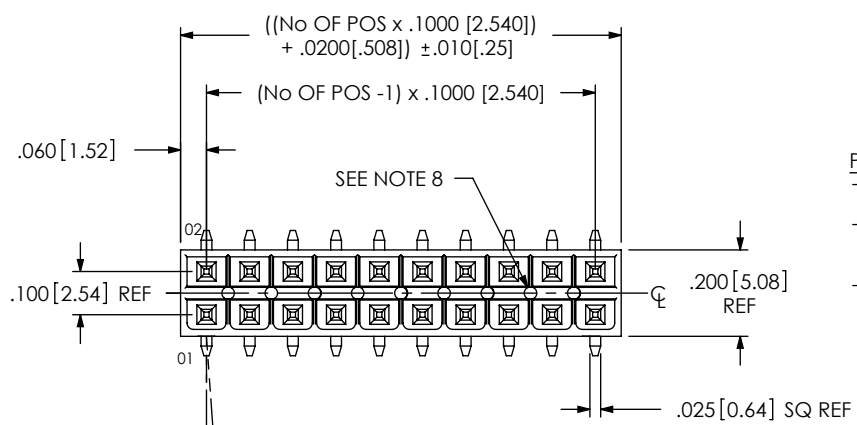


IPT1-1XX-XX-XX-D-VS-XX-XXX



No OF POS PER ROW
-02 THRU -25

LEAD STYLE
-01

PLATING SPECIFICATION
-S: HEAVY SELECTIVE GOLD (USE T-1S6-25-S-2)
-SM: HEAVY SELECTIVE GOLD, MATTE TIN ON TAIL (USE T-1S6-25-S-2)
-L: LIGHT SELECTIVE GOLD, MATTE TIN ON TAIL (USE T-1S6-25-L-2)

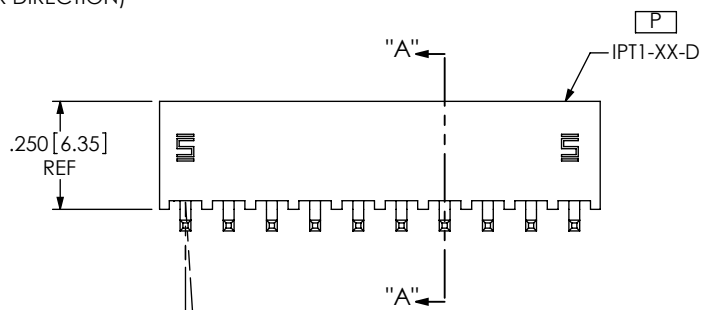
OPTION
-POL: POSITION #1 REMOVED (USE IPT1-XX-D-P)
-K: POLYAMIDE FILM PAD [AVAILABLE ON POSITIONS -03 THRU -25 ONLY]
-FL: FRICTION LOCK [POS -05 THRU -25] (USE IPT1-XX-D-FL-X & T-1S64-05-X)
-TR: TAPE AND REEL

OPTION
-A: ALIGNMENT PIN (USE SM-A11) [4 POS MIN]
-LC: LOCKING CLIP (USE LC-07-TM) [4 POS MIN]

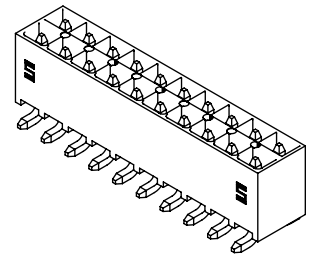
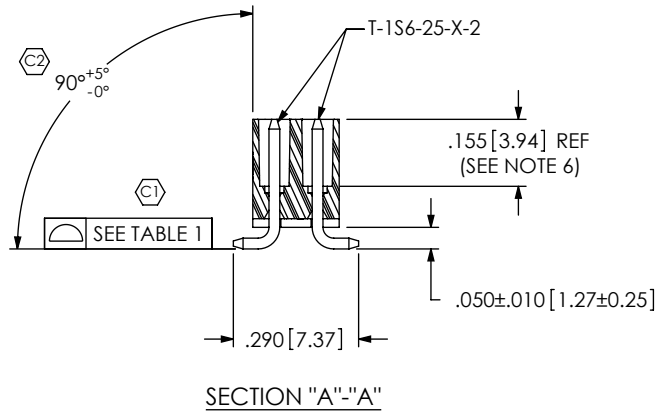
TAIL OPTION
-VS: VERTICAL SURFACE MOUNT

ROW SPECIFICATION
-D: DOUBLE (USE IPT1-XX-D)

2° MAX SWAY (EITHER DIRECTION)



2° MAX SWAY (EITHER DIRECTION)



SECTION "A"- "A"

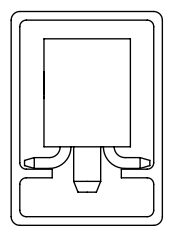
NOTES:

1. C REPRESENTS A CRITICAL DIMENSION.
2. MAXIMUM ALLOWABLE CUT FLASH: $.010 [.25]$.
3. MINIMUM TERMINAL PUSH OUT FORCE: 2 lbs.
4. MAXIMUM VARIATION BETWEEN PIN ROWS: $.005 [.13]$.
5. "END WALLS" AFTER CUTTING SHOULD BE $.015 \pm .003 [.38 \pm .08]$.
6. PINS TO BE FLUSH TO $.008 [.20]$ MAXIMUM RECESSED IN BODY.
7. ALL DIMENSIONS TO BE ABOUT CENTERLINE WITHIN $\pm .005 [.13]$.
8. PRESENCE OF VOIDS IS OPTIONAL AND PATTERN TO WHICH THEY OCCUR IS VARIABLE.
9. AFTER REVISION T OF COMPONENT PRINT IPT1-XX-D-XX-X, SAMTEC LOGO TO APPEAR ON CORE #1 FOR POSITIONS 1 THROUGH 5 AND CORE #1 AND #49 FOR POSITIONS 6 THROUGH 50.

P

PACKAGING VIEW

[-02 POSITION TO BE BULK PACKAGED]



TUBE: PT-1-24-01-103
PLUG: TP-09

IN-PROCESS

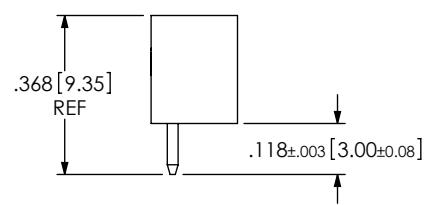


TABLE 1

POSITION	COPLANARITY
-02 THRU -10	$.005 [.13]$
-11 THRU -25	$.006 [.15]$

UNLESS OTHERWISE SPECIFIED, DIMENSIONS ARE IN INCHES.
TOLERANCES ARE:
DECIMALS ANGLES
.XX: $\pm .01 [.3]$ $\pm 2^\circ$
.XXX: $\pm .005 [.13]$
.XXXX: $\pm .0020 [.051]$

PROPRIETARY NOTE
THIS DOCUMENT CONTAINS INFORMATION CONFIDENTIAL AND PROPRIETARY TO SAMTEC, INC. AND SHALL NOT BE REPRODUCED OR TRANSFERRED TO OTHER DOCUMENTS OR DISCLOSED TO OTHERS OR USED FOR ANY PURPOSE OTHER THAN THAT WHICH IT WAS OBTAINED WITHOUT THE EXPRESSED WRITTEN CONSENT OF SAMTEC, INC.



520 PARK EAST BLVD. NEW ALBANY, IN 47150
PHONE: 812-944-6733 FAX: 812-948-5047
e-Mail: info@SAMTEC.com code: 55322

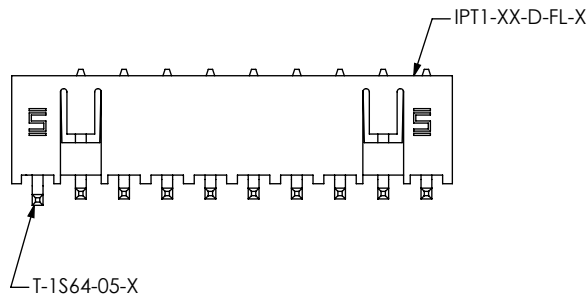
MATERIAL: DO NOT SCALE DRAWING SHEET SCALE: 2.25:1
INSULATOR: VECTRA E130i, COLOR: BLACK
CONTACT: PHOS BRONZE, 510, 3/4 HARD

DESCRIPTION:
.100 DOUBLE ROW SHROUDED TERMINAL ASSEMBLY

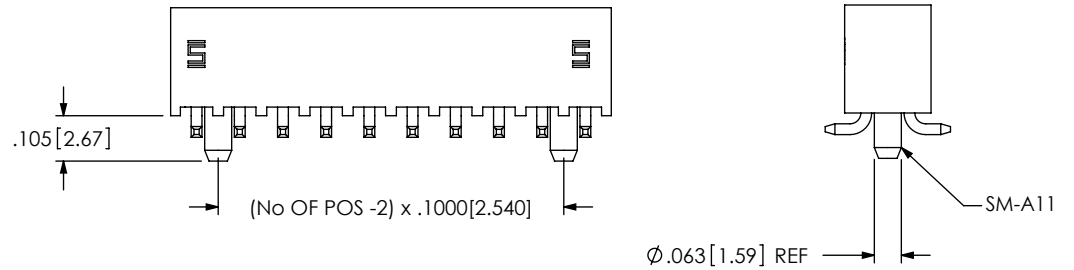
DWG. NO.
IPT1-1XX-XX-XX-D-VS-XX-XXX

BY: DEAN P 11-06-2002 SHEET 1 OF 2

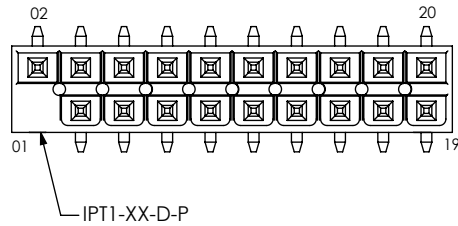
-FL: FRICTION LOCK OPTION
IPT1-110-01-X-D-VS-FL SHOWN



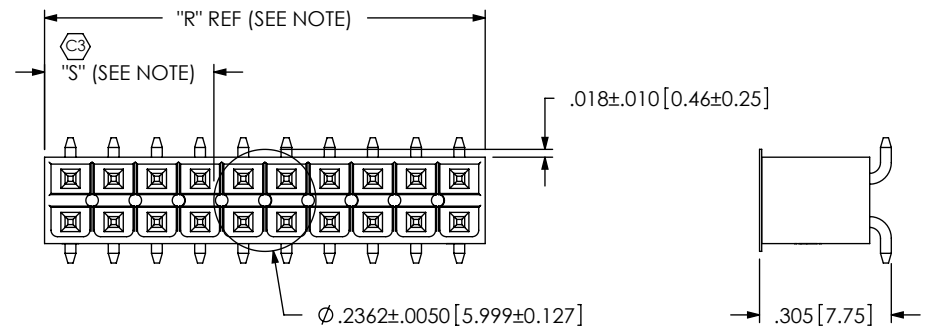
-A: ALIGNMENT PIN OPTION
IPT1-110-01-X-D-VS-A SHOWN



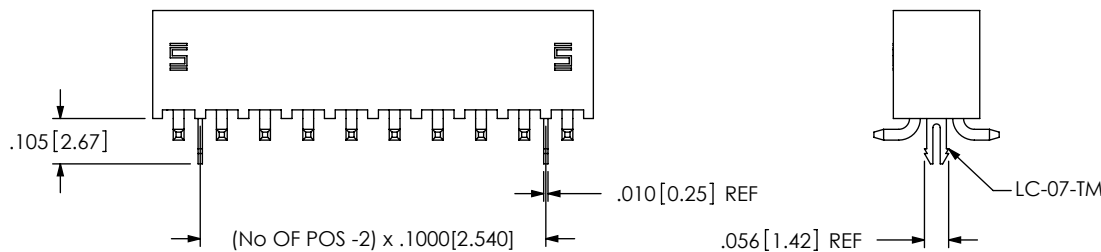
-POL: POLARIZED OPTION
IPT1-110-01-X-D-VS-POL SHOWN



-K: POLYAMIDE FILM PAD OPTION
[AVAILABLE ON POSITIONS -03 THRU -25 ONLY]



-LC: LOCKING CLIP OPTION
IPT1-110-01-X-D-VS-LC-FL SHOWN



NOTE: "R" = USE MEASURED DIMENSION
"S" = (("R" - .2362 [6.000] / 2) ± .020 [51])

PROPRIETARY NOTE
THIS DOCUMENT CONTAINS INFORMATION
CONFIDENTIAL AND PROPRIETARY TO
SAMTEC, INC. AND SHALL NOT BE REPRODUCED
OR TRANSFERRED TO OTHER DOCUMENTS OR
DISCLOSED TO OTHERS OR USED FOR ANY
PURPOSE OTHER THAN THAT WHICH IT WAS
OBTAINED WITHOUT THE EXPRESSED WRITTEN
CONSENT OF SAMTEC, INC.

DO NOT SCALE DRAWING

SHEET SCALE: 2.25:1

samtec

520 PARK EAST BLVD, NEW ALBANY, IN 47150
PHONE: 812-944-6733 FAX: 812-948-5047
e-Mail: info@SAMTEC.com code: 55322

DESCRIPTION:
.100 DOUBLE ROW SHROUDED TERMINAL ASSEMBLY

DWG. NO.
IPT1-1XX-XX-XX-D-VS-XX-XXX

BY: DEAN P 11-06-2002 SHEET 2 OF 2