



SSMA Female Bulkhead Connector Solder Attachment For PE-047SR, PE-SR047AL, PE-SR047FL, .177 inch D Hole

TECHNICAL DATA SHEET

PE44429

SSMA Female Bulkhead Connector Solder Attachment For PE-047SR, PE-SR047AL, PE-SR047FL, .177 inch D Hole

Configuration

Connector	SSMA Female
Connector Interface Type	PE-047SR, PE-SR047AL, PE-SR047FL
Cable Attachment Method (Shield/Contact)	Solder/Solder
Body Style	Straight
Mount Method	Bulkhead

Electrical Specifications

Impedance, Ohms	50
-----------------	----

Mechanical Specifications

Size

Length, in [mm]	0.685 [17.4]
Width/Dia., in [mm]	0.375 [9.53]
Weight, lbs [g]	0.008 [3.63]

Connector

Type	SSMA Female
Contact Material and Plating	Gold
Body Material and Plating	Brass, Gold

Compliance Certifications (visit www.Pasternack.com for current document)

RoHS Compliant	Yes
----------------	-----

Plotted and Other Data

Notes:	Values at 25 °C, sea level
--------	----------------------------

SSMA Female Bulkhead Connector Solder Attachment For PE-047SR, PE-SR047AL, PE-SR047FL, .177 inch D Hole from Pasternack Enterprises has same day shipment for domestic and International orders. Our RF, microwave and fiber optic products maintain a 99% availability and are part of the broadest selection in the industry.

Click the following link (or enter part number in "SEARCH" on website) to obtain additional part information including price, inventory and certifications: [SSMA Female Bulkhead Connector Solder Attachment For PE-047SR, PE-SR047AL, PE-SR047FL, .177 inch D Hole PE44429](http://www.pasternack.com/ssma-female-standard-pe-047sr-pe-sr047al-pe-sr047fl-connector-pe44429-p.aspx)

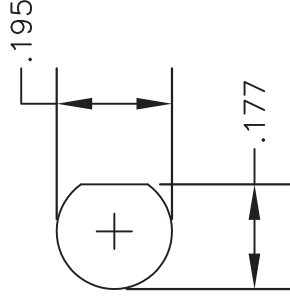
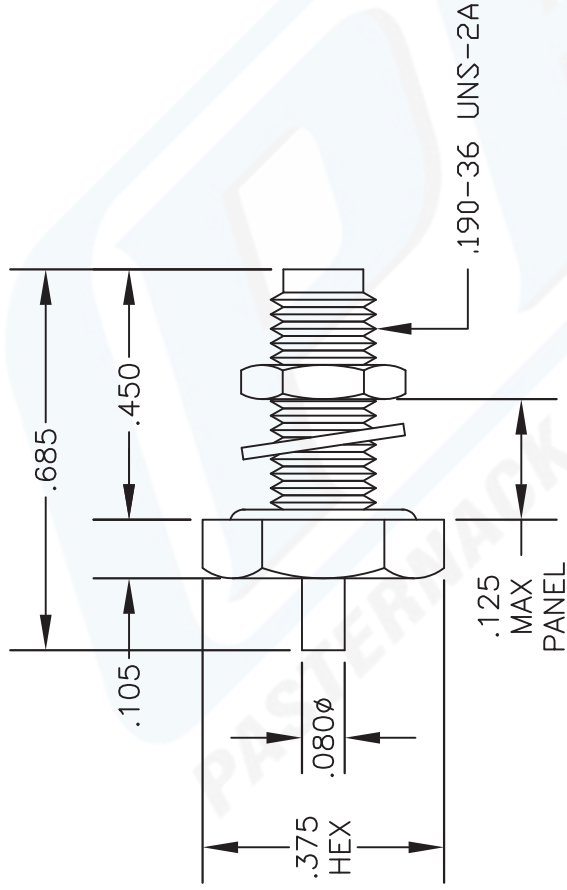
URL: <http://www.pasternack.com/ssma-female-standard-pe-047sr-pe-sr047al-pe-sr047fl-connector-pe44429-p.aspx>

The information contained in this document is accurate to the best of our knowledge and representative of the part described herein. It may be necessary to make modifications to the part and/or the documentation of the part, in order to implement improvements. Pasternack reserves the right to make such changes as required. Unless otherwise stated, all specifications are nominal.



MATERIALS

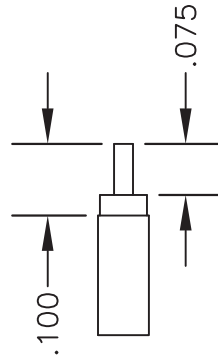
BODY	BRASS GOLD PLATED
CONTACT	GOLD PLATED
INSULATOR	PTFE



MOUNTING HOLES

ASSEMBLY PROCEDURES

1. STRIP CABLE TO DIMENSION SHOWN, DO NOT NICK CENTER CONDUCTOR & DIELECTRIC.
2. SOLDER CONTACT TO CENTER CONDUCTOR, INSERT CABLE INTO BODY UNTIL CONTACT SETS IN PLACE. SOLDER OUTER CONDUCTOR TO BODY.



STRIPPING DIMENSIONS



PASTERNAK ENTERPRISES, INC.
 P O BOX 16759, IRVINE, CA 92623
 PHONE (949) 261-1920 FAX (949) 261-7451
 WEB ADDRESS: www.pasternack.com
 E-MAIL ADDRESS: sales@pasternack.com
COAXIAL & FIBER OPTICS

DWG TITLE		DES.	SSMA FEMALE BULKHEAD SOLDER ATTACHMENT FOR PE-047SR, PE-SR047AL & PE-SR047FL
PE44429			
SIZE A	FSCM NO. 53919	CAD FILE	030704
		SCALE	N/A
			127

NOTES:

1. UNLESS OTHERWISE SPECIFIED ALL DIMENSIONS ARE NOMINAL.
2. ALL SPECIFICATIONS ARE SUBJECT TO CHANGE WITHOUT NOTICE AT ANY TIME.