

Make TAO-3530 mobile by using the onboard battery interface.

Connect a 4.3" LCD Flatpanel display with touchscreen interface.

Create your own multimedia application by using the SD cardreader, audio, speakers and HDMI/DVI interface.

System

System on module Compatible with TAO-3530 by two 100 pin NAIS connectors (**B1, B2**)

Interfaces

Connectors 2 mini-USB hosts (**13**)
1 mini-USB device/ OTG (**12**)
LAN connector (**14**) by SMSC 9500
SD card slot (**17**)
stereo audio in/out, 3.5 mm (**5, 6**)
2W amplified speaker (**7, 8**)
battery interface (**9**)
TTL LCD & touchpanel for 4.3" LCD
DVI-D signal by HDMI connector(**11**)
SPI, RS-232, UART, I²C, GPIO (**1**)

Expansion header

Power

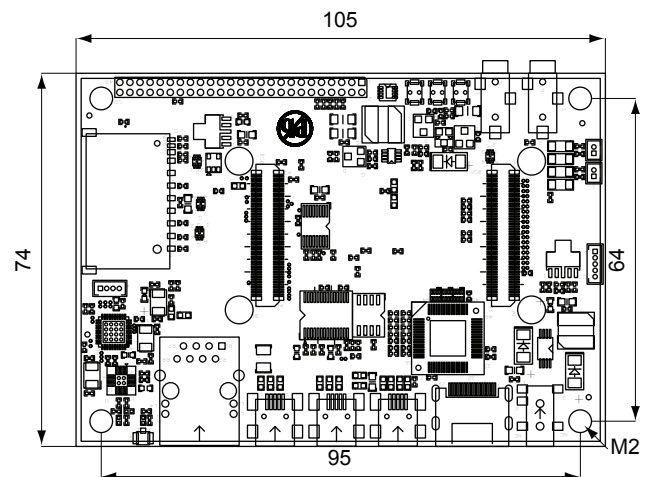
Input power 5VDC

Environmental and Mechanical

Temperature Commercial: 0° to 50° C
Humidity 10-90%
Dimensions 105 x 74 mm
4 1/8 x 2 7/8 inch
Weight 42 grams
Shock 50G / 25ms
Vibration 20G / 0-600 Hz

Dimensions

units in mm



Order Information

Thunder Base board for TAO series

Development kits available

TechNexion

Phone: +886-2-8227-3585
E-mail: sales@technexion.com
Web: <http://www.technexion.com>

