

Coaxial Frequency Mixer

ZX05-10L+ ZX05-10L

Level 4 (LO Power +4 dBm) 10 to 1000 MHz

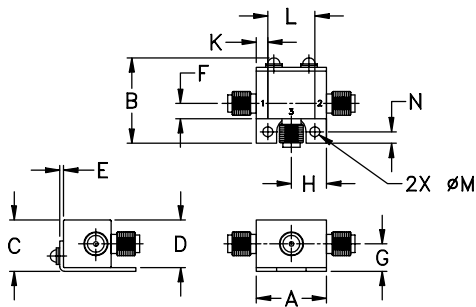
Maximum Ratings

Operating Temperature	-40°C to 85°C
Storage Temperature	-55°C to 100°C
RF Power	50mW
IF Current	40mA

Coaxial Connections

LO	1
RF	2
IF	3

Outline Drawing



Outline Dimensions (inch/mm)

A	B	C	D	E	F	G
.74	.90	.54	.50	.04	.16	.29
18.80	22.86	13.72	12.70	1.02	4.06	7.37
H	J	K	L	M	N	wt
.37	--	.122	.496	.106	.122	grams
9.40	--	3.10	12.60	2.69	3.10	20.0

Features

- rugged construction
- small size
- low conversion loss
- high L-R isolation
- protected by US Patents, 6,133,525; 6,790,049 & 6,947,717

Applications

- cellular
- PCS
- instrumentation
- satellite communication



CASE STYLE: FL905

Connectors	Model	Price	Qty.
SMA	ZX05-10L-S(+)	\$37.95 ea.	(1-24)

+ RoHS compliant in accordance with EU Directive (2002/95/EC)

The +Suffix identifies RoHS Compliance. See our web site for RoHS Compliance methodologies and qualifications.

Electrical Specifications (T_{AMB}=25°C)

FREQUENCY (MHz)	CONVERSION LOSS (dB)	LO-RF ISOLATION (dB)			LO-IF ISOLATION (dB)			IP3 at center band (dBm)										
		L	M	U	L	M	U											
10-1000	DC-800	7.2	0.1	8.2	8.8	70	55	60	40	47	37	40	26	37	20	24	13	16

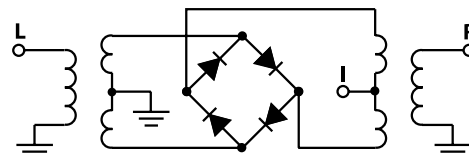
1 dB COMP.: +1 dBm typ.
Conversion Loss increases when IF is above 150 MHz.

L = low range [f_l to $10 f_l$]
M = mid range [$10 f_l$ to $f_l/2$]
U = upper range [$f_l/2$ to f_u]

Typical Performance Data

Frequency (MHz)		Conversion Loss (dB)	Isolation L-R (dB)	Isolation L-I (dB)	VSWR RF Port (:1)	VSWR LO Port (:1)
RF	LO	LO +4dBm	LO +4dBm	LO +4dBm	LO +4dBm	LO +4dBm
10.10	40.10	7.11	73.60	61.44	1.50	1.25
50.10	80.10	6.95	64.82	48.24	1.48	1.20
100.10	70.10	7.02	60.58	42.69	1.47	1.19
143.85	113.85	6.98	58.32	40.57	1.45	1.19
191.35	161.35	6.97	56.93	39.20	1.44	1.18
262.60	232.60	6.82	55.91	37.54	1.41	1.20
310.10	280.10	6.80	55.22	36.17	1.39	1.24
357.60	327.60	6.75	54.50	34.01	1.39	1.25
405.10	375.10	6.78	53.05	31.84	1.38	1.27
452.60	422.60	6.74	51.42	30.10	1.37	1.32
500.10	470.10	6.82	49.97	27.89	1.38	1.37
552.10	522.10	6.72	51.89	26.26	1.34	1.36
616.10	586.10	6.76	66.73	24.80	1.30	1.44
648.10	618.10	6.72	57.27	24.21	1.29	1.48
712.10	682.10	6.89	47.16	23.25	1.33	1.52
776.10	746.10	7.00	47.22	22.14	1.38	1.57
840.10	810.10	7.13	50.02	20.82	1.42	1.57
904.10	874.10	7.10	58.49	19.62	1.46	1.49
968.10	938.10	6.57	57.19	18.18	1.42	1.51
1000.10	970.10	6.41	49.70	17.55	1.41	1.54

Electrical Schematic



Mini-Circuits
ISO 9001 ISO 14001 CERTIFIED

ALL NEW
minicircuits.com

P.O. Box 350166, Brooklyn, New York 11235-0003 (718) 934-4500 Fax (718) 332-4661 For detailed performance specs & shopping online see Mini-Circuits web site



The Design Engineers Search Engine Provides ACTUAL Data Instantly From MINI-CIRCUITS At: www.minicircuits.com

RF/IF MICROWAVE COMPONENTS

REV. C
M98898
ZX05-10L
RVN/TD/CP/AM
070117
Page 1 of 2

Performance Charts

