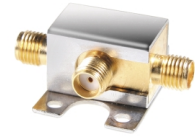


# Coaxial Frequency Mixer

## ZX05-1LHW+ ZX05-1LHW

Level 10 (LO Power +10 dBm) 2 to 750 MHz



CASE STYLE: FL905

### Maximum Ratings

Operating Temperature	-40°C to 85°C
Storage Temperature	-55°C to 100°C
RF Power	50mW
IF Current	40mA

### Coaxial Connections

LO	1
RF	2
IF	3

### Features

- rugged construction
- small size
- low conversion loss
- high L-R isolation
- protected by US Patents 6,133,525 & 6,790,049

### Applications

- cellular
- PCS
- instrumentation
- satellite communication

Connectors	Model	Price	Qty.
SMA	ZX05-1LHW-S(+)	\$38.95 ea.	(1-24)

**+ RoHS compliant in accordance with EU Directive (2002/95/EC)**

The +Suffix identifies RoHS Compliance. See our web site for RoHS Compliance methodologies and qualifications.

### Electrical Specifications (T<sub>AMB</sub>=25°C)

FREQUENCY (MHz)	CONVERSION LOSS (dB)	LO-RF ISOLATION (dB)					LO-IF ISOLATION (dB)					IP3 at center band (dBm)						
		Mid-Band m		Total Range Max.			L	M	U	L	M		U					
LO/RF f <sub>L</sub> -f <sub>U</sub>	IF X̄ σ Max.	5.3	0.1	6.8	8.5	66	50	52	35	46	27	64	40	50	27	40	20	15

1 dB COMP.: +5 dBm typ.

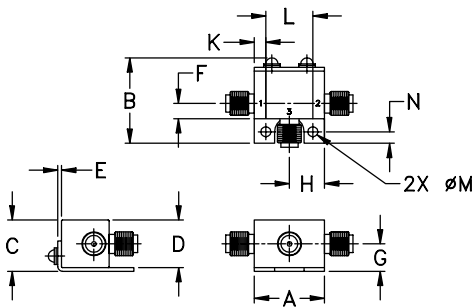
L = low range [f<sub>L</sub> to 10 f<sub>L</sub>]

m = mid band [2 f<sub>L</sub> to f<sub>U</sub>/2]

M = mid range [10 f<sub>L</sub> to f<sub>U</sub>/2]

U = upper range [f<sub>U</sub>/2 to f<sub>U</sub>]

### Outline Drawing



### Outline Dimensions (inch/mm)

A	B	C	D	E	F	G
.74	.90	.54	.50	.04	.16	.29
18.80	22.86	13.72	12.70	1.02	4.06	7.37

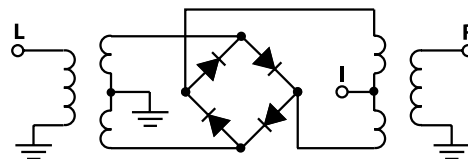
  

H	J	K	L	M	N	wt
.37	--	.122	.496	.106	.122	grams
9.40	--	3.10	12.60	2.69	3.10	20.0

### Typical Performance Data

Frequency (MHz)		Conversion Loss (dB)	Isolation L-R (dB)	Isolation L-I (dB)	VSWR RF Port (:1)	VSWR LO Port (:1)
RF	LO	LO +10dBm	LO +10dBm	LO +10dBm	LO +10dBm	LO +10dBm
2.10	32.10	5.66	59.62	51.83	1.25	2.36
35.10	65.10	5.32	58.24	51.21	1.07	2.33
75.10	45.10	5.38	55.93	50.03	1.07	2.32
120.10	90.10	5.37	53.75	48.44	1.09	2.31
141.10	111.10	5.36	52.84	47.70	1.10	2.33
183.10	153.10	5.42	51.21	45.39	1.12	2.33
225.10	195.10	5.43	50.01	43.72	1.14	2.36
267.10	237.10	5.50	48.69	42.00	1.16	2.34
309.10	279.10	5.48	48.07	40.61	1.19	2.39
351.10	321.10	5.54	46.97	39.10	1.21	2.33
375.10	345.10	5.53	46.13	38.22	1.22	2.36
414.10	384.10	5.58	44.75	37.04	1.25	2.39
456.10	426.10	5.69	44.54	36.26	1.28	2.34
519.10	489.10	5.82	45.58	35.79	1.32	2.28
540.10	510.10	5.85	45.82	35.82	1.33	2.28
582.10	552.10	5.88	45.49	35.25	1.34	2.39
624.10	594.10	5.88	44.72	34.10	1.33	2.36
666.10	636.10	6.06	42.54	32.43	1.29	2.53
708.10	678.10	6.25	41.92	31.16	1.29	2.45
750.10	720.10	6.52	41.78	30.01	1.35	2.54

### Electrical Schematic



**Mini-Circuits®**  
ISO 9001 ISO 14001 CERTIFIED

ALL NEW  
minicircuits.com

P.O. Box 350166, Brooklyn, New York 11235-0003 (718) 934-4500 Fax (718) 332-4661 For detailed performance specs & shopping online see Mini-Circuits web site



The Design Engineers Search Engine Provides ACTUAL Data Instantly From MINI-CIRCUITS At: [www.minicircuits.com](http://www.minicircuits.com)

RF/IF MICROWAVE COMPONENTS

REV. C  
M111173  
ZX05-1LHW  
RVN/TD/CP  
080225  
Page 1 of 2

# ZX05-1LHW+ ZX05-1LHW

## Performance Charts

