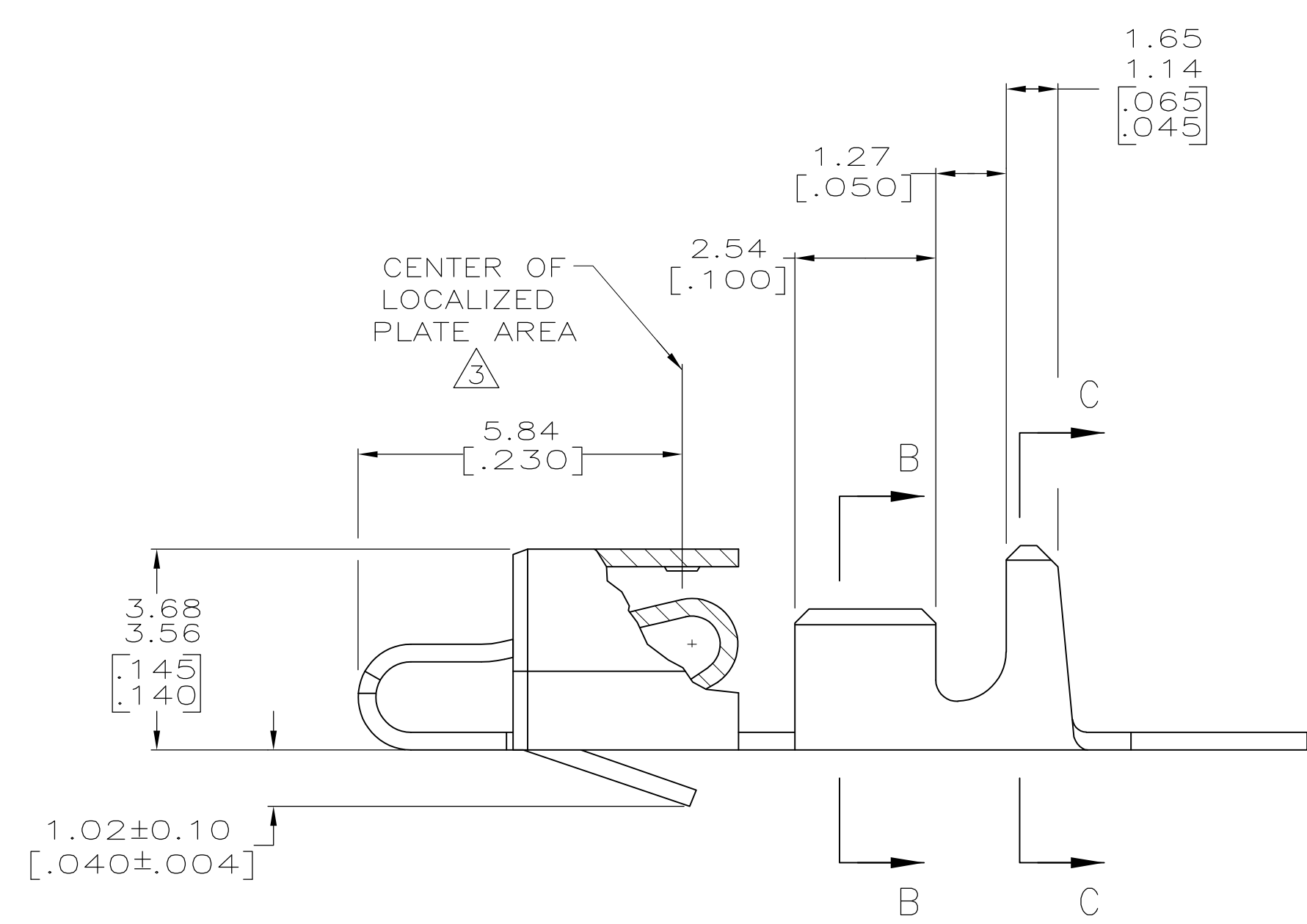
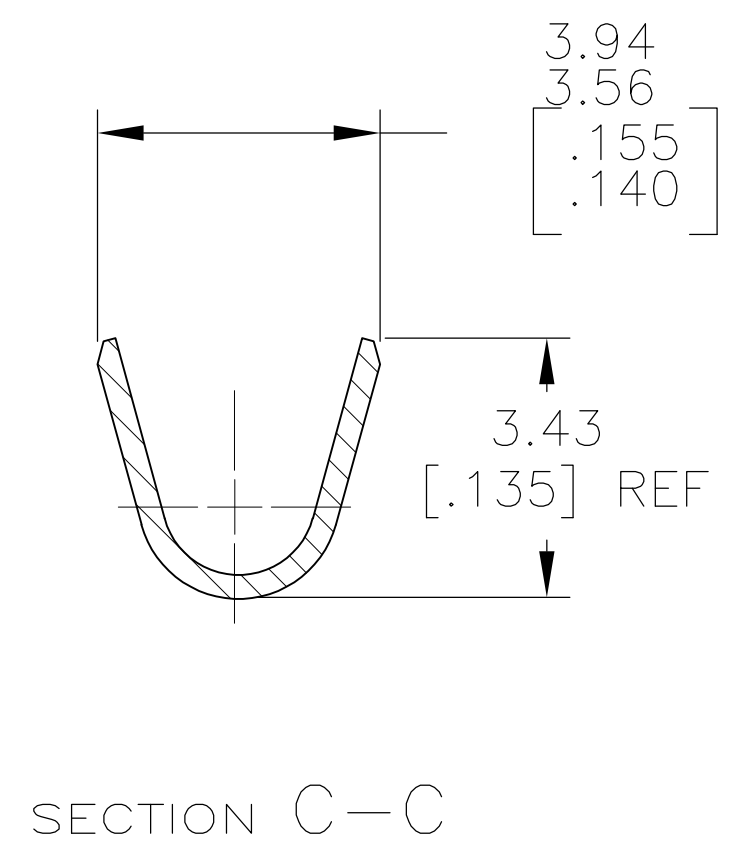
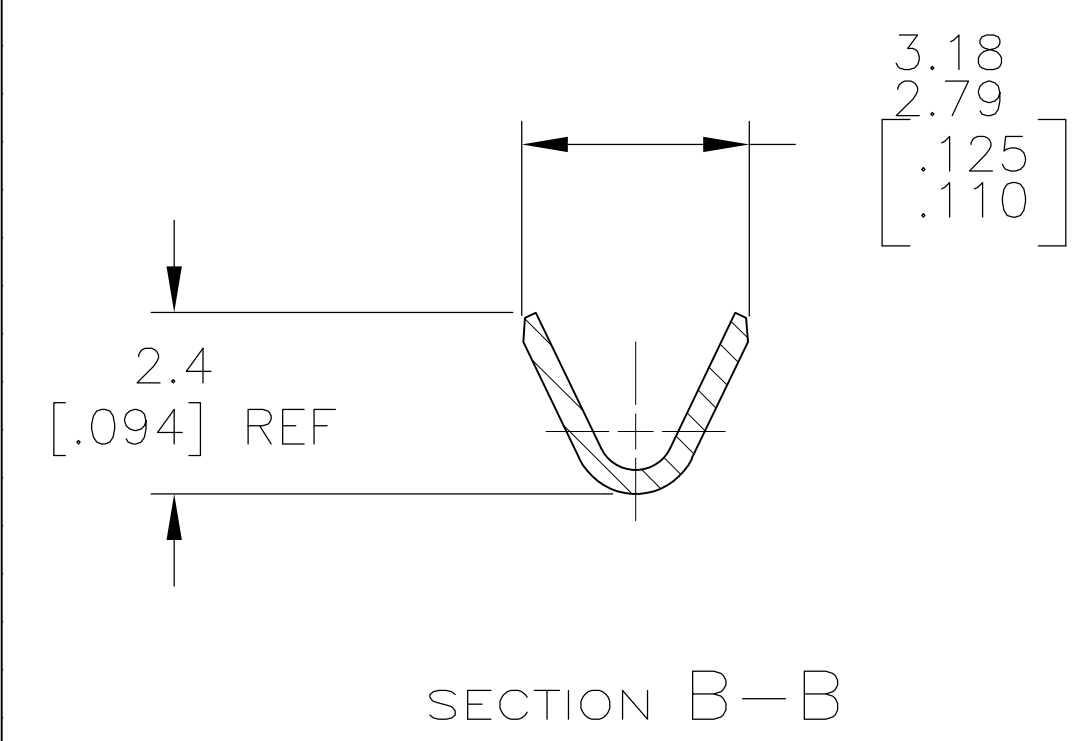
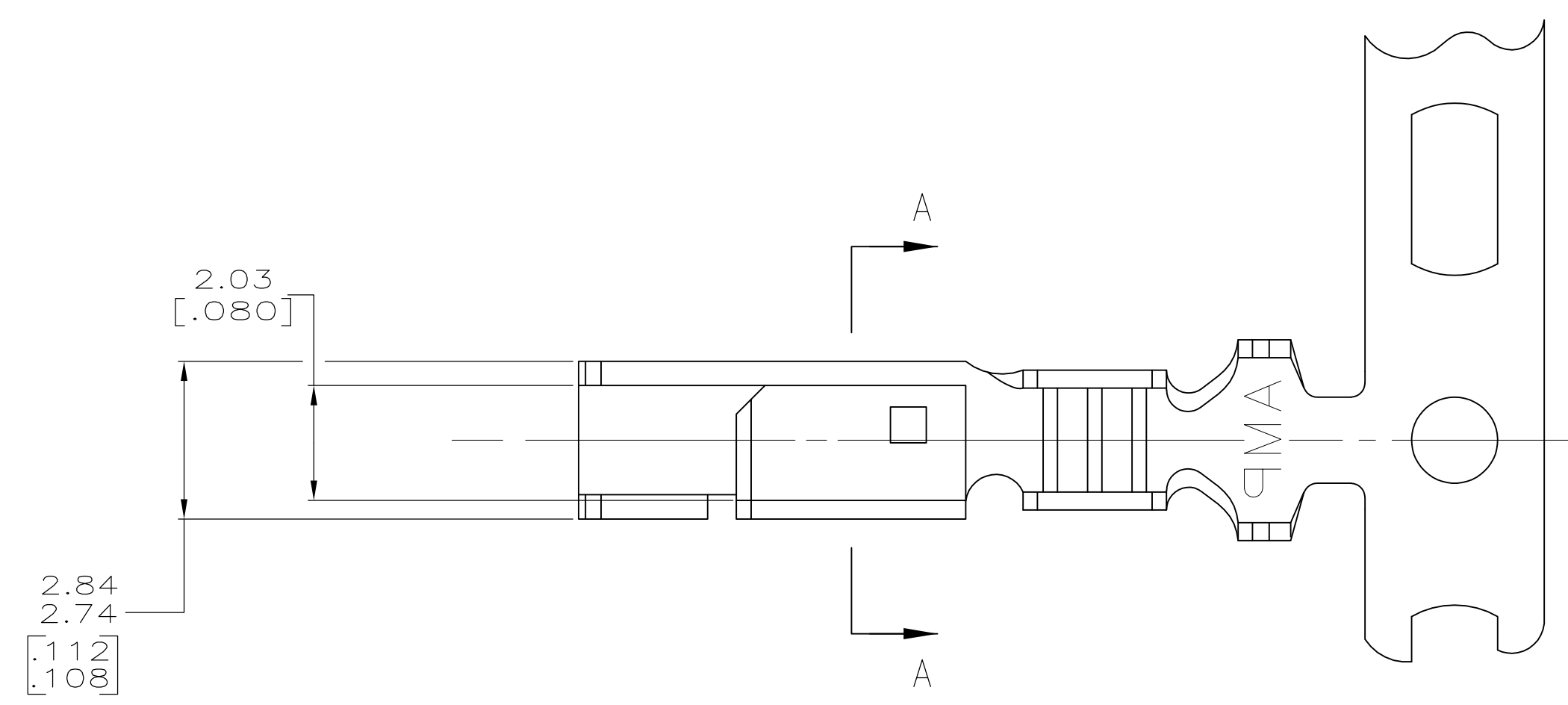
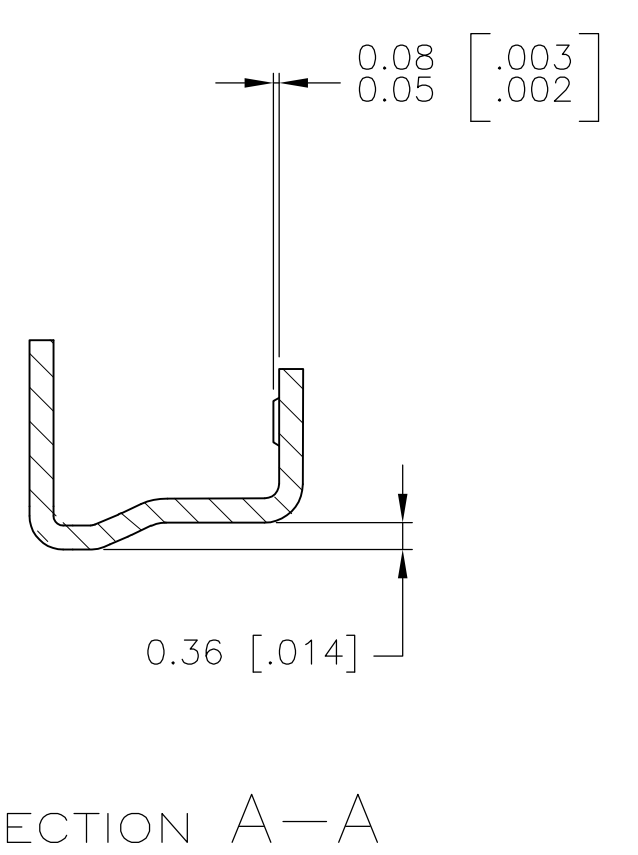


LOC	DIST	REVISIONS			
P	LTR	DESCRIPTION	DATE	DWN	APVD
K1	REVISED PER	ECO-11-004587	11MAR11	RK	HMR



- INSULATION RANGE: 1.09–2.79 [.043–.110]
WIRE RANGE: 0.2–0.9 mm² (24–18) AWG.
- 0.00203 [.000080] MIN BRIGHT TIN-LEAD OVER
0.00127 [.000050] MIN NICKEL.
- 0.00076 [.000030] MIN THICK GOLD STRIPES IN
LOCALIZED PLATE AREA ON BEAM AND DIMPLE OVER
0.00127 [.000050] MIN THICK NICKEL OVER ENTIRE
CONTACT.
- DIMENSIONS IN BRACKETS ARE IN INCHES.
- 0.00203 [.000080] MIN TIN OVER
0.00127 [.000050] MIN NICKEL.

△3	3-770476-1
△3	770476-2
△2	770476-1
FINISH	PART NO.

METRIC

THIS DRAWING IS A CONTROLLED DOCUMENT.

DIMENSIONS: mm [INCHES]	TOLERANCES UNLESS OTHERWISE SPECIFIED:	DIN K. WHITAKER 180CT2004	CHK J. ELLIS	NAME
0 PLC ± -	1 PLC ± -	2 PLC ± -	3 PLC ± .005	4 PLC ANGLES ± ± 0°30'
MATERIAL		FINISH		APVD J. ELLIS
MATERIAL		FINISH		PRODUCT SPEC
MATERIAL		FINISH		APPLICATION SPEC
MATERIAL		FINISH		WEIGHT
MATERIAL		FINISH		SIZE A1
MATERIAL		FINISH		CAGE CODE 00779
MATERIAL		FINISH		DRAWING NO 770476
MATERIAL		FINISH		RESTRICTED TO
MATERIAL		FINISH		CUSTOMER DRAWING
MATERIAL		FINISH		SCALE 10:1
MATERIAL		FINISH		SHEET 1 OF 1
MATERIAL		FINISH		REV K1

STE TE Connectivity

RECEPTACLE, SL-156