

SPECIFICATIONS

Mechanical

Contact Retention Force: 0.75Lbs (0.34kg) min.
Durability: 25 Cycles
Vibration: Pass MIL-STD-1344A, method 2005 condition

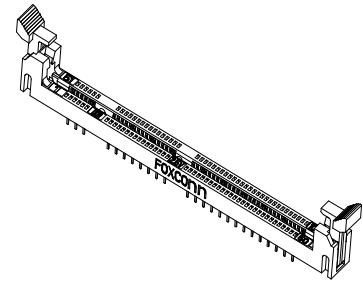
Electrical

Voltage Rating: 250V
Current Rating: 1.0A max.
Dielectric Withstanding Voltage: 500V
Insulation Resistance: 1000MW min.
Low Level Contact Resistance (Dry Circuit): 30mW max. initial

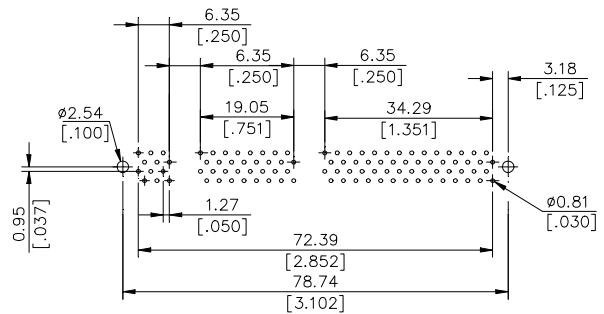
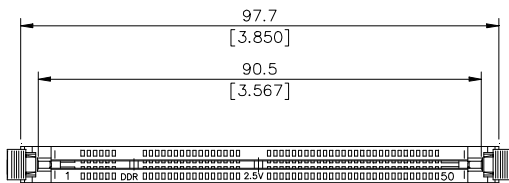
Physical

Housing: Thermoplastic, UL 94V-0 rated in Black Color
Ejector Lever: Thermoplastic, UL 94V-0 rated in Ivory Color
Contact: Copper alloy
Operating Temperature: 0 to +85

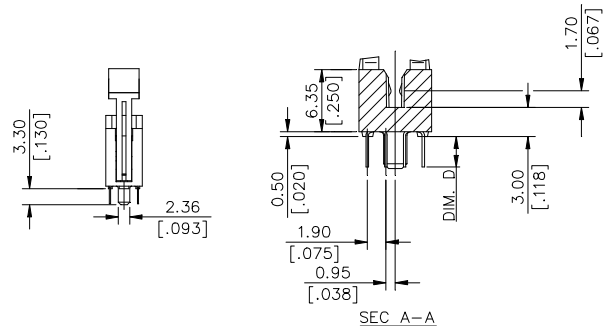
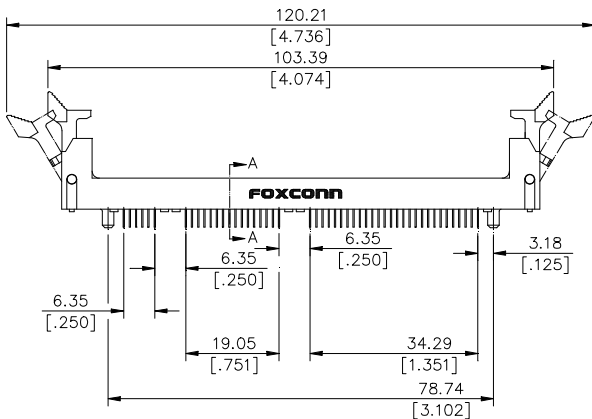
AT050 Series
Vertical, T/H Type
1.27mm [.050"] Pitch
100 Pos.



DRAWING



RECOMMENDED P.C.B LAYOUT



ORDERING INFORMATION

PRODUCT NO.: AT 0 * * * * - * * *

- Memory Socket with Contact Pitch of .050"
- Single Row
- No. of Pos. 50=100 Pos.
- Tail Length 0=3.15 [.124] 1=2.67 [.105]
- Extension Code
- Contact Area Plating
 - 1=Gold Flash
 - 2=20u" Gold
 - 3=30u" Gold
 - 6=10u" Gold
 - 7=15u" Gold
 - F=Gold Flash (Lead Free)
 - J=10u" Gold (Lead Free)
 - V=15u" Gold (Lead Free)
 - X=20u" Gold (Lead Free)
 - H=30u" Gold (Lead Free)

AT0500*-D5	2.5 V	DDR	3.15 [.124]
AT0501*-D5	2.5 V	DDR	2.67 [.105]
P/N	VOLTAGE MARKING	LEFT KEY ZONE	DIM. D