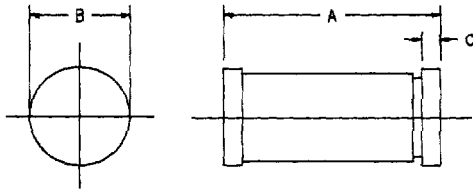


1 Amp Schottky Rectifier HSM180, HSM190

C



Dim.	Inches		Millimeter		Notes
	Minimum	Maximum	Minimum	Maximum	
A	.189	.205	4.80	5.20	Dia.
B	.094	.105	2.39	2.66	
C	.016	.022	.41	.55	

GLASS HERMETIC DO213AB

Microsemi Catalog Number	Working Peak Reverse Voltage	Repetitive Peak Reverse Voltage	
HSM180	80V	80V	<ul style="list-style-type: none"> • Schottky Barrier Rectifier • Guard Ring Protection • 175°C Junction Temperature • VRRM 80 to 90 Volts • Economical Surface Mount Package
HSM190	90V	90V	

Electrical Characteristics		
Average forward current	I _{F(AV)} 1.0 Amps	T _A = 138°C, Square wave, R _{θJC} = 45°C/W
Maximum surge current	I _{FSM} 75 Amps	8.3ms, half sine, T _J = 150°C
Max peak forward voltage	V _{FM} .53 Volts	I _{FM} = 0.1A; T _J = 25°C*
Max peak forward voltage	V _{FM} .81 Volts	I _{FM} = 1.0A; T _J = 25°C*
Max peak reverse current	I _{RM} 100 μA	V _{RRM, T_J} = 25°C
Typical junction capacitance	C _J 45pF	V _R = 5.0V, T _J = 25°C
*Pulse test: Pulse width 300 μsec, Duty cycle 2%		

Thermal and Mechanical Characteristics		
Storage temperature range	T _{STG}	-65°C to 175°C
Operating junction temp range	T _J	-65°C to 150°C
Maximum thermal resistance	R _{θJC}	45°C/W Junction to Case
Weight		.0047 ounces (.012 grams) typical

Microsemi Corp.
Colorado

PH: 303-469-2161
FAX: 303-466-3775

C 15

HSM180, HSM190

Figure 1
Typical Forward Characteristics

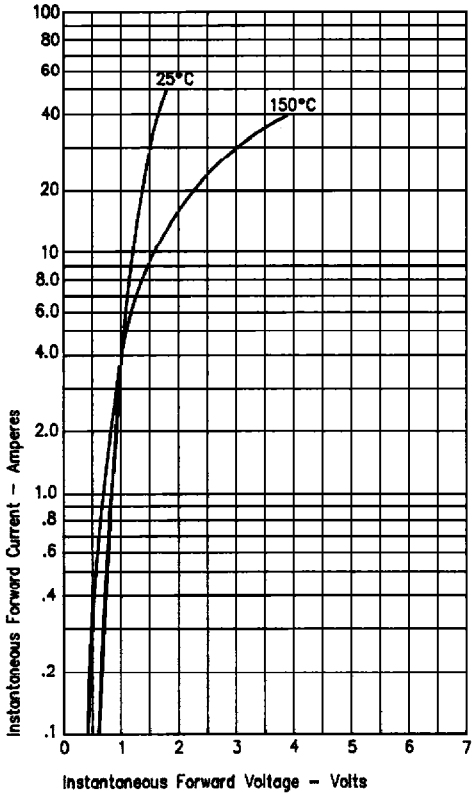


Figure 3
Typical Junction Capacitance

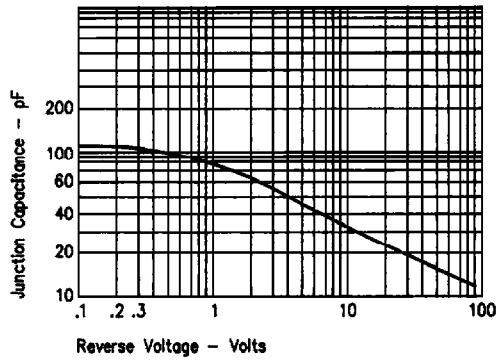


Figure 2
Typical Reverse Characteristics

