

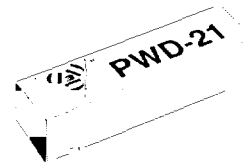
**Fast Logic**  
**Pulse Width Discriminator**

**SERIES: PWD-21**  
**TTL Interfaced**



**Features:**

- Auto-insertable.
- Completely interfaced with TTL and DTL application.
- No external components required.
- P.C. board space economy achieved.
- Fits standard 14 pins DIP socket.

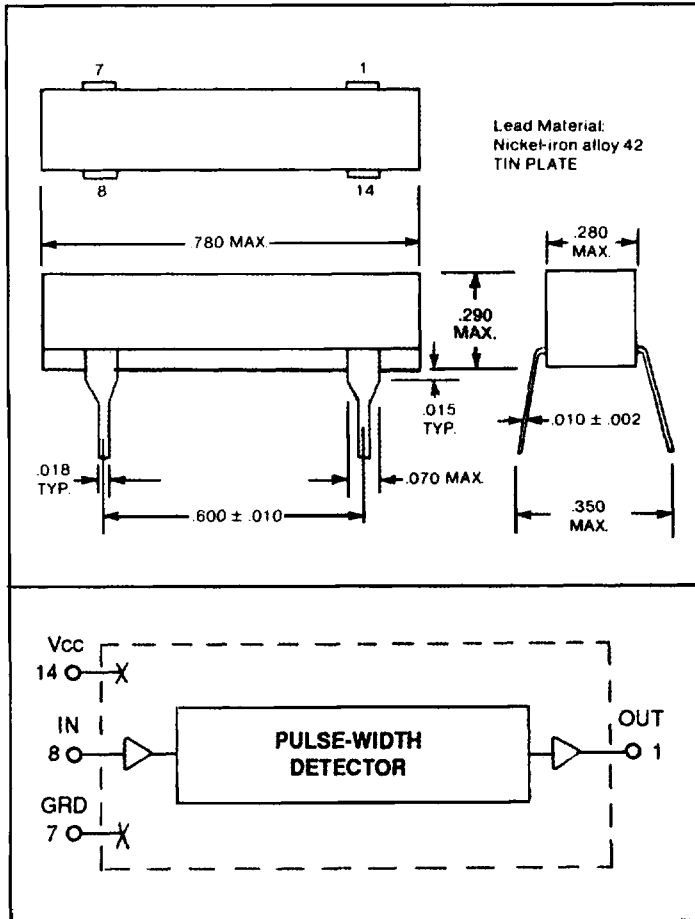


**Specifications:**

- **Pulse-width tolerance:**  $\pm 5\%$  or better or 2 ns whichever is greater.
- **Rise-time:** 2 ns typically.
- **Temperature coefficient:** 100 PPM/ $^{\circ}\text{C}$ .
- **Temperature range:**  $0^{\circ}\text{C}$  to  $70^{\circ}\text{C}$  standard.

- **Supply voltage:** 4.75 to 5.25 Vdc.
- **Supply current:**  
 $I_{CC1}$ : 32 ma.  
 $I_{CC2}$ : 7 ma.

- **DC Parameters:** See TTL-Fast Schottky Logic Table on Page 6.



Part No.	Pulse Widths (ns)		
	Nominal	Suppress	Pass
PWD-21-5	5	$\leq 4$	$\geq 6$
PWD-21-10	10	$\leq 9$	$\geq 11$
PWD-21-15	15	$\leq 14$	$\geq 16$
PWD-21-20	20	$\leq 19$	$\geq 21$
PWD-21-25	25	$\leq 24$	$\geq 26$
PWD-21-30	30	$\leq 29$	$\geq 31$
PWD-21-35	35	$\leq 34$	$\geq 36$
PWD-21-40	40	$\leq 39$	$\geq 41$
PWD-21-45	45	$\leq 43.5$	$\geq 46.5$
PWD-21-50	50	$\leq 48.5$	$\geq 51.5$
PWD-21-60	60	$\leq 58$	$\geq 62$
PWD-21-70	70	$\leq 68$	$\geq 72$
PWD-21-75	75	$\leq 73$	$\geq 77$
PWD-21-80	80	$\leq 78$	$\geq 82$
PWD-21-90	90	$\leq 88$	$\geq 92$
PWD-21-100	100	$\leq 98$	$\geq 102$
PWD-21-125	125	$\leq 123$	$\geq 127$
PWD-21-150	150	$\leq 147$	$\geq 153$
PWD-21-175	175	$\leq 172$	$\geq 178$
PWD-21-200	200	$\leq 196$	$\geq 204$
PWD-21-250	250	$\leq 245$	$\geq 255$
PWD-21-300	300	$\leq 294$	$\geq 306$
PWD-21-400	400	$\leq 392$	$\geq 408$
PWD-21-500	500	$\leq 490$	$\geq 510$