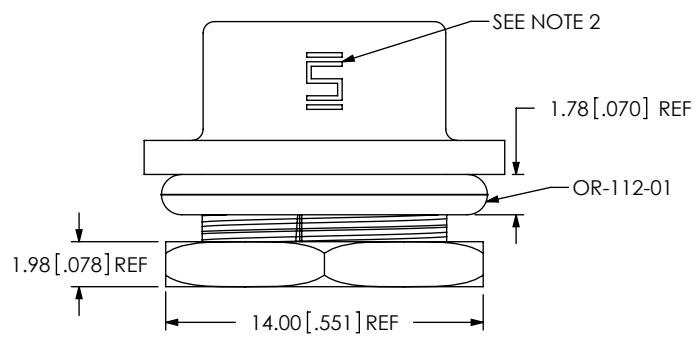


DO NOT SCALE FROM THIS PRINT



DESIGNED & DIMENSIONED IN MILLIMETERS [INCHES]

SPM-05-X-X-XXX-PF

No OF POSITIONS
-05

PLATING SPECIFICATION
-S: SELECTIVE, .000030 GOLD ON POST, TIN ON TAIL

TYPE
-B

OPTION
-PF: PANEL FLANGE

TERMINATION
-RA: RIGHT ANGLE (SHEET 1, FIG. 1)
-VT1: VERTICAL THROUGH HOLE (SHEET 2, FIG. 2) (SEE NOTE 6)
-VT2: VERTICAL THROUGH HOLE FOR THICKER PANELS (SHEET 7, FIG. 3) (SEE NOTE 6)

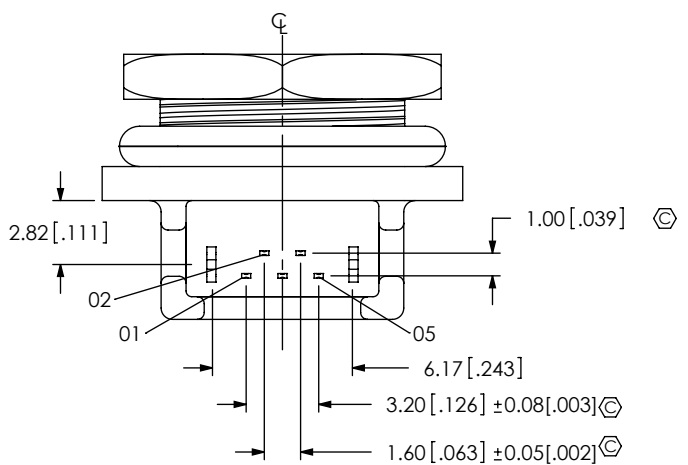
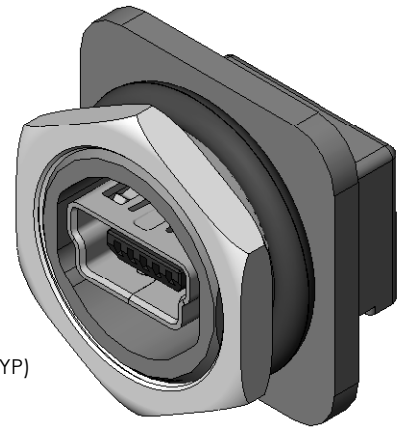
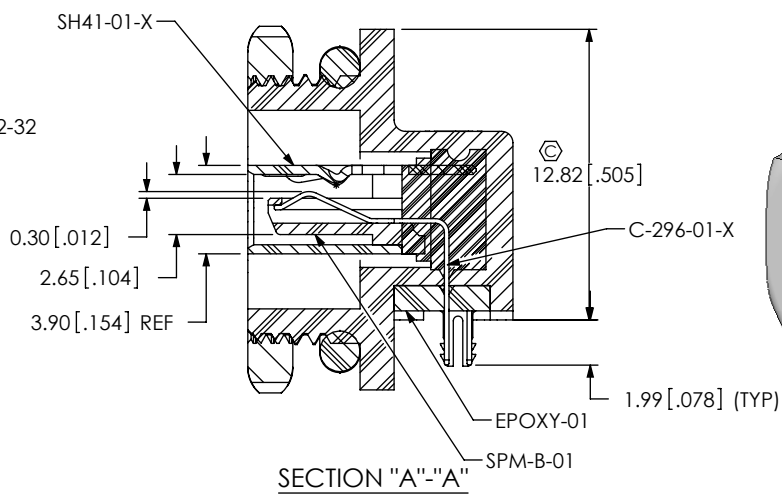
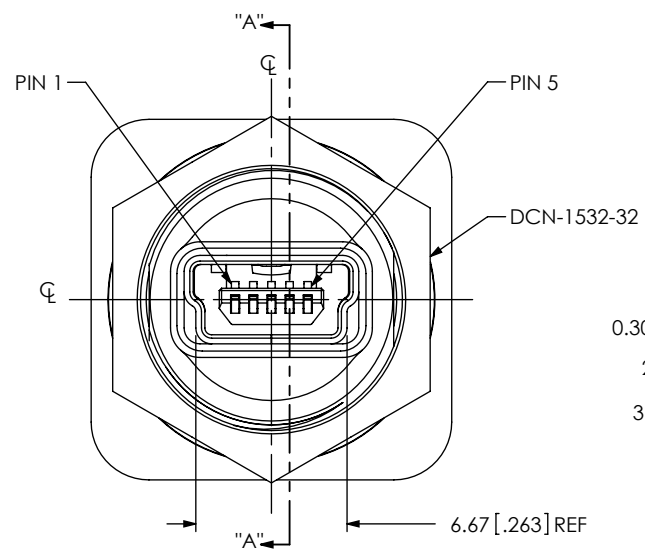



FIG. 1
SPM-05-S-B-RA-PF SHOWN

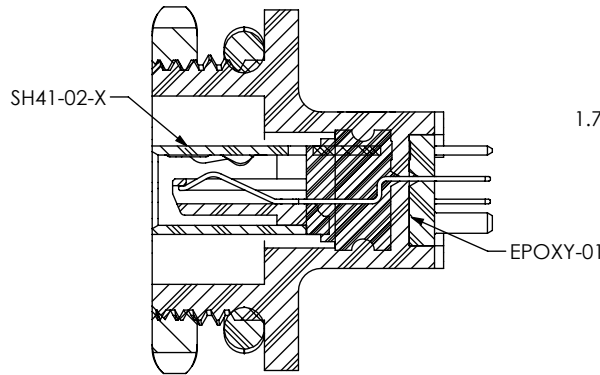
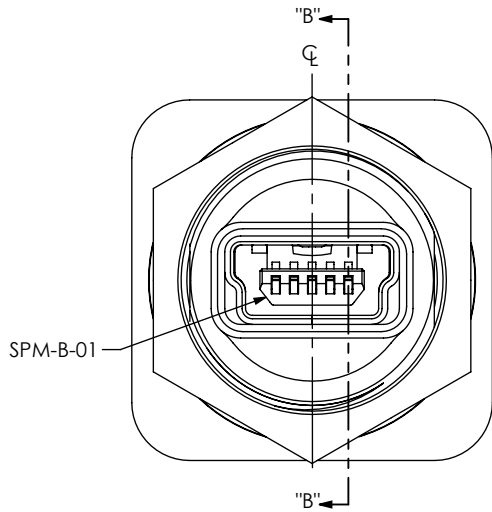
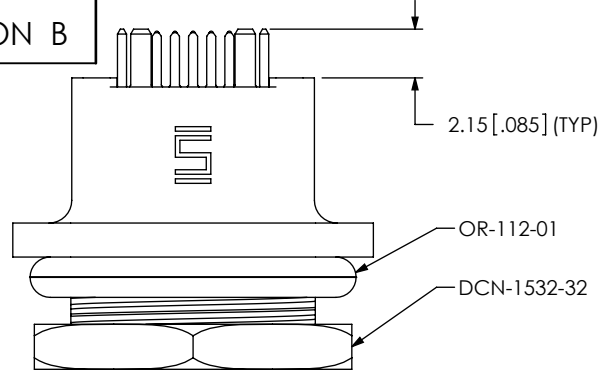
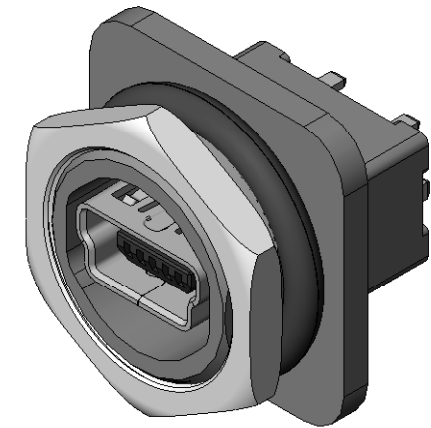
NOTES:

1. Ⓢ REPRESENTS A CRITICAL DIMENSION.
2. SAMTEC LOGO SHALL APPEAR AT LOCATIONS ON SURFACE SHOWN, APPROXIMATELY 2.50 x 1.56.
3. MINIMUM PUSH OUT FORCE: 1N [.25 LB].
4. MAXIMUM HEIGHT VARIATION BETWEEN ANY TWO POSTS: 0.13 [.005].
5. MAXIMUM ALLOWABLE BOW: 0.05 [.002] MM/MM AFTER ASSEMBLY.
6. MAXIMUM PANEL THICKNESS: 2.03 [.080] FOR -RA AND -VT1, MAX PANEL THICKNESS: 5.21 [.205] FOR -VT2, RECOMMENDED PANEL CUT ON SHEET 3.
7. FLATS REQUIRED AT R_f OF CAMS TO AVOID DRAGGING THREADS.
8. REQUIRED INSTALLATION TORQUE FOR NUT: 0.28-0.56 N-M [2.5-5.0 IN-LBS].
9. PARTS TO BE PACKAGED IN TUBES.

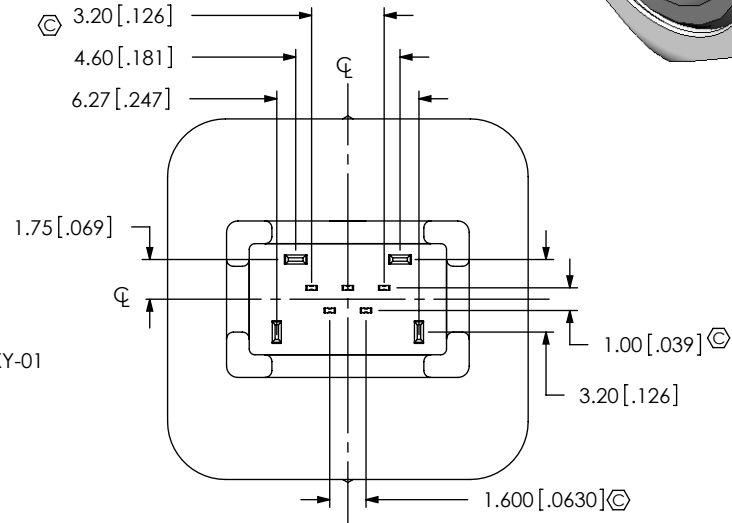
<p>UNLESS OTHERWISE SPECIFIED, DIMENSIONS ARE IN MILLIMETERS. TOLERANCES ARE:</p> <p>DECIMALS ANGLES</p> <p>X.X: ±0.3 [.01] 2°</p> <p>X.XX: ±0.13 [.005]</p> <p>X.XXX: ±0.051 [.0020]</p>	<p>PROPRIETARY NOTE</p> <p>THIS DOCUMENT CONTAINS INFORMATION CONFIDENTIAL AND PROPRIETARY TO SAMTEC, INC. AND SHALL NOT BE REPRODUCED OR TRANSFERRED TO OTHER DOCUMENTS OR DISCLOSED TO OTHERS OR USED FOR ANY PURPOSE OTHER THAN THAT WHICH IT WAS OBTAINED WITHOUT THE EXPRESSED WRITTEN CONSENT OF SAMTEC, INC.</p>	 <p>520 PARK EAST BLVD, NEW ALBANY, IN 47150 PHONE: 812-944-6733 FAX: 812-948-5047 e-Mail: info@SAMTEC.com code 55322</p>
<p>MATERIAL: DO NOT SCALE DRAWING SHEET SCALE: 1:0.333333</p> <p>INSULATOR: LCP COLOR: BLACK</p> <p>CONTACT: PHOS BRONZE</p> <p>SHIELD: PHOS BRONZE</p> <p>SEAL: SILICONE</p> <p>PREMOLD: PBT, COLOR: BLACK</p> <p>OVERMOLD: LCP; MAX REGRIND: 50%, COLOR: BLACK</p> <p>F:\DWG\MISC\MKTG\SPM-05-X-X-XXX-PF-MKT.SLDDRW</p>	<p>DESCRIPTION: SEALED PORT MINI USB</p> <p>DWG. NO. SPM-05-X-X-XXX-PF</p> <p>BY: T NEWTON 06/30/2009 SHEET 1 OF 7</p>	

REVISION B

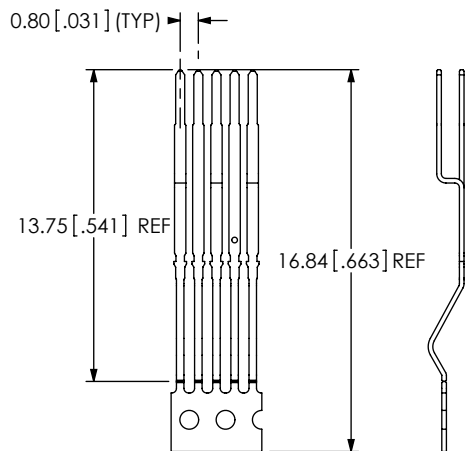
FIG. 2
SPM-05-S-B-VTT-PF SHOWN
(SAME AS FIG. 1, EXCEPT AS SHOWN)



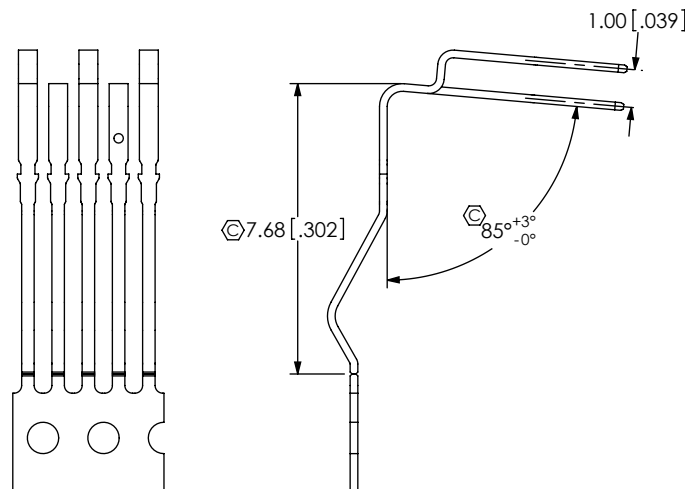
SECTION "B"-"B"



-RA IN-PROCESS 1
CUT COMBS C-296-01-X



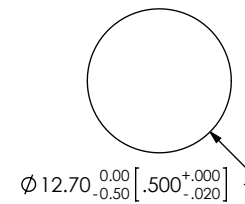
-RA IN-PROCESS 2
FORM C-296-01-X



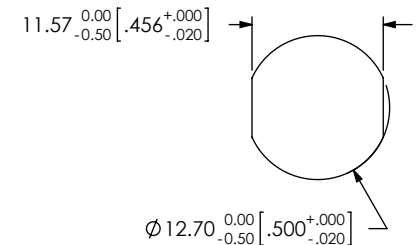
F:\DWG\MISC\MKTG\SPM-05-X-X-XXX-PF-MKT.SLDDRW

RECOMMENDED PANEL CUTOUTS
(SEE NOTE 6)

OPTION 1



OPTION 2



PROPRIETARY NOTE

THIS DOCUMENT CONTAINS INFORMATION CONFIDENTIAL AND PROPRIETARY TO SAMTEC, INC. AND SHALL NOT BE REPRODUCED OR TRANSFERRED TO OTHER DOCUMENTS OR DISCLOSED TO OTHERS OR USED FOR ANY PURPOSE OTHER THAN THAT WHICH IT WAS OBTAINED WITHOUT THE EXPRESSED WRITTEN CONSENT OF SAMTEC, INC.

DO NOT SCALE DRAWING

SHEET SCALE: 1:0.333333

samtec

520 PARK EAST BLVD, NEW ALBANY, IN 47150
PHONE: 812-944-6733 FAX: 812-948-5047
e-Mail: info@SAMTEC.com code 55322

DESCRIPTION:

SEALED PORT MINI USB

DWG. NO.

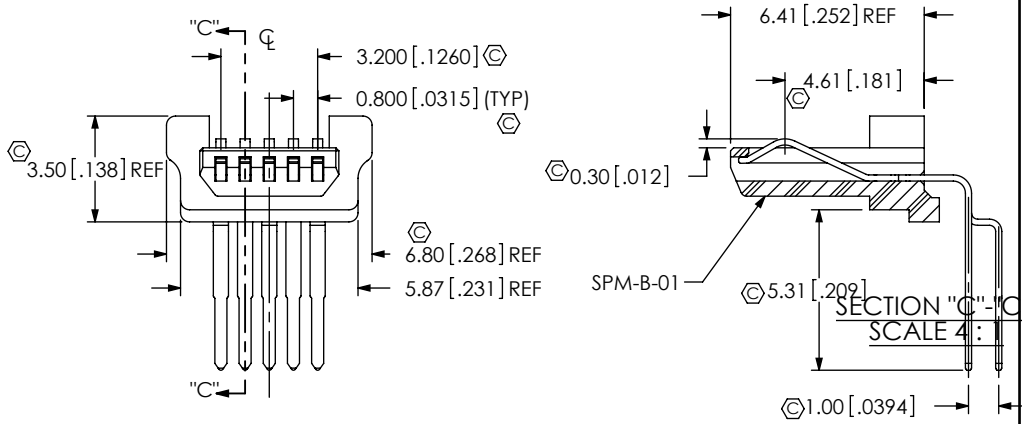
SPM-05-X-X-XXX-PF

BY: T NEWTON 06/30/2009

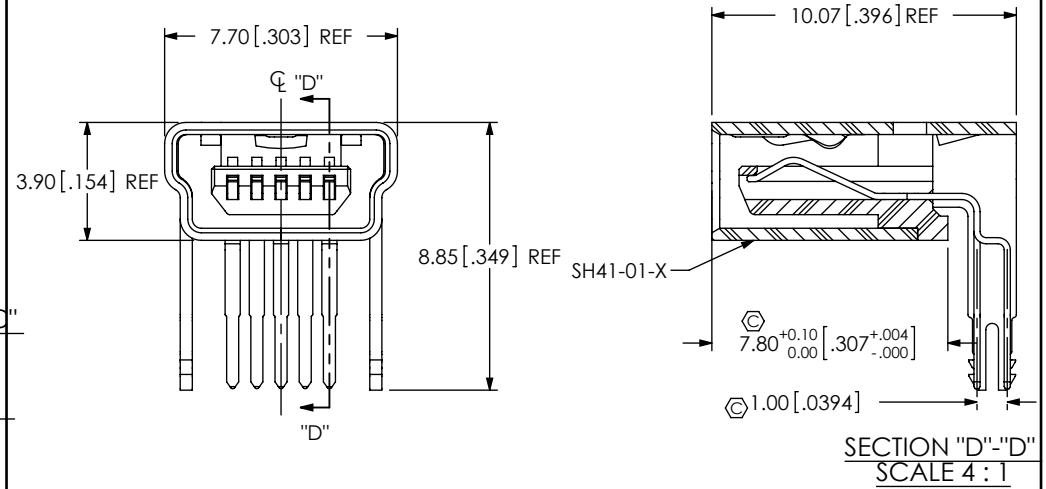
SHEET 2 OF 7

REVISION B

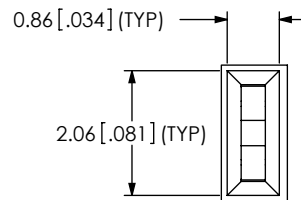
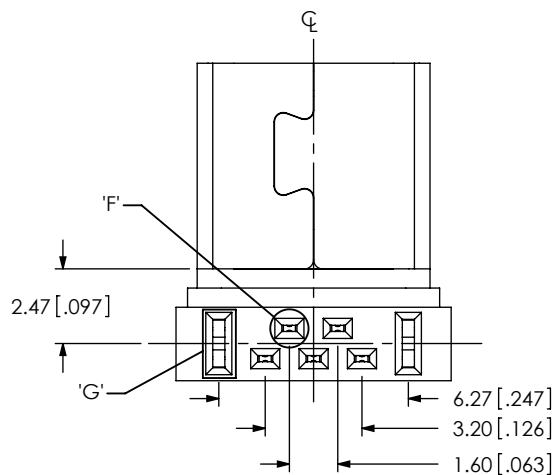
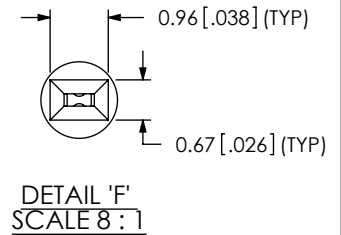
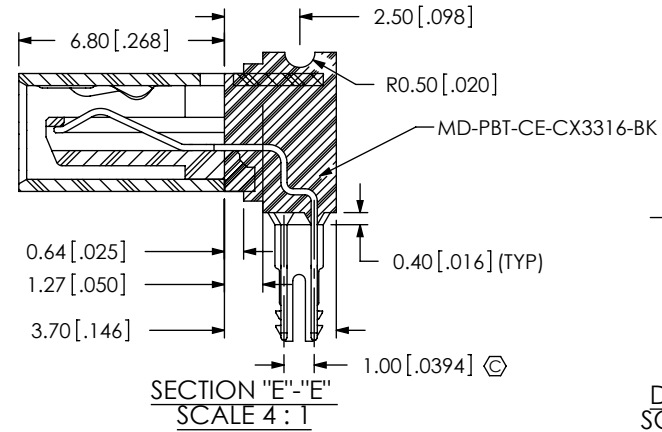
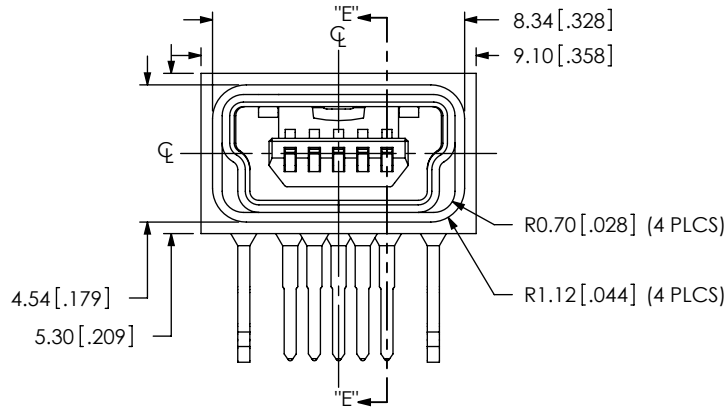
-RA IN-PROCESS 3
FILL C-296-01-X



-RA IN-PROCESS 4
FILL SH41-XX-X



-RA IN-PROCESS 5
ADD PREMOLD

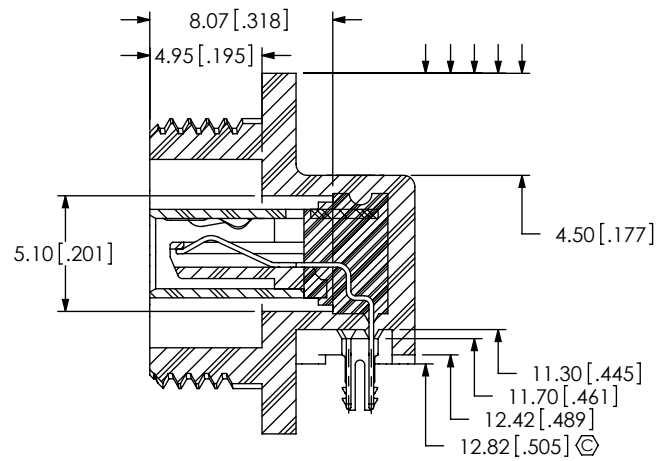
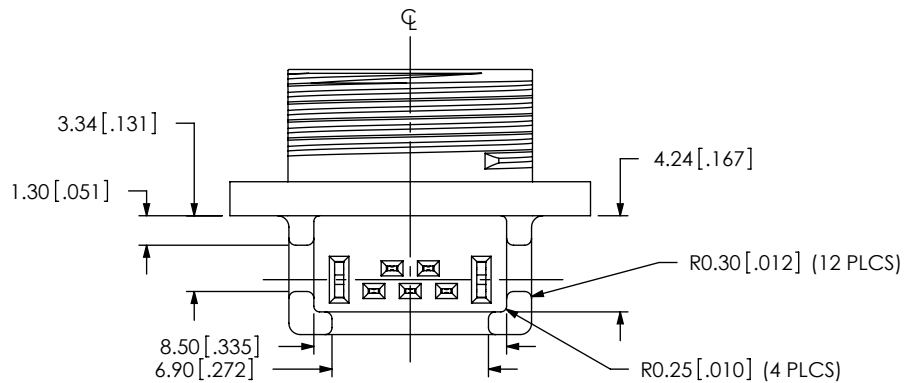
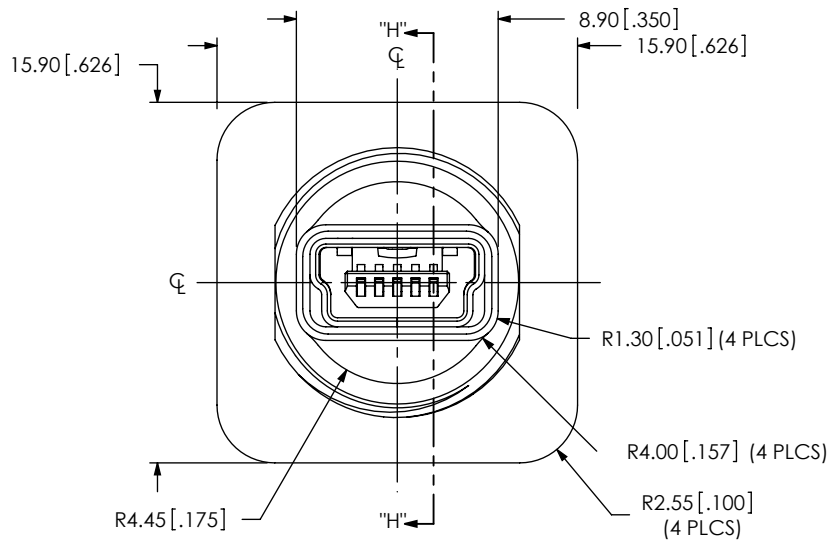
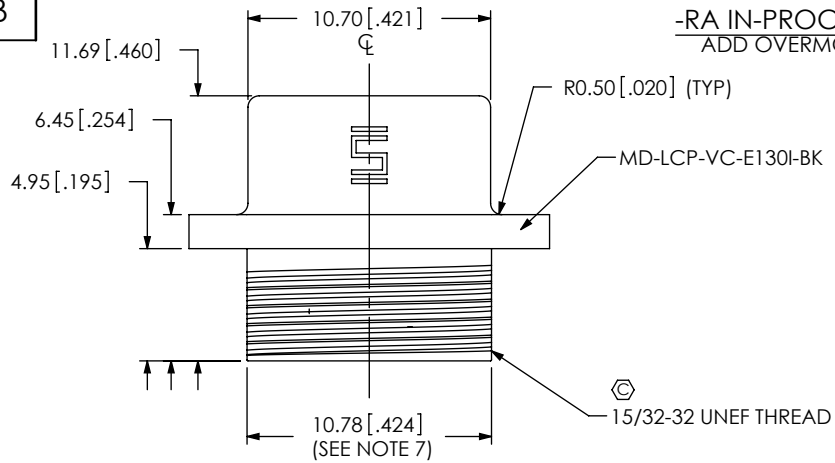


PROPRIETARY NOTE
THIS DOCUMENT CONTAINS INFORMATION CONFIDENTIAL AND PROPRIETARY TO SAMTEC, INC. AND SHALL NOT BE REPRODUCED OR TRANSFERRED TO OTHER DOCUMENTS OR DISCLOSED TO OTHERS OR USED FOR ANY PURPOSE OTHER THAN THAT WHICH IT WAS OBTAINED WITHOUT THE EXPRESSED WRITTEN CONSENT OF SAMTEC, INC.

DO NOT SCALE DRAWING
SHEET SCALE: 1:0.2

samtec	
520 PARK EAST BLVD, NEW ALBANY, IN 47150 PHONE: 812-944-6733 FAX: 812-948-5047 e-Mail: info@SAMTEC.com code 55322	
DESCRIPTION:	SEALED PORT MINI USB
DWG. NO.	SPM-05-X-X-XXX-PF
BY: T NEWTON 06/30/2009	SHEET 3 OF 7

-RA IN-PROCESS 6
ADD OVERMOLD



SECTION "H"- "H"

PROPRIETARY NOTE

THIS DOCUMENT CONTAINS INFORMATION CONFIDENTIAL AND PROPRIETARY TO SAMTEC, INC. AND SHALL NOT BE REPRODUCED OR TRANSFERRED TO OTHER DOCUMENTS OR DISCLOSED TO OTHERS OR USED FOR ANY PURPOSE OTHER THAN THAT WHICH IT WAS OBTAINED WITHOUT THE EXPRESSED WRITTEN CONSENT OF SAMTEC, INC.

DO NOT SCALE DRAWING

SHEET SCALE: 1:0.333333

samtec

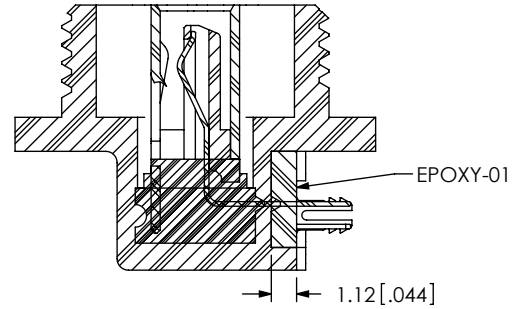
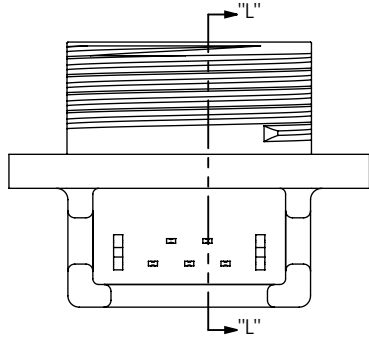
520 PARK EAST BLVD, NEW ALBANY, IN 47150
PHONE: 812-944-6733 FAX: 812-948-5047
e-Mail info@SAMTEC.com code 55322

DESCRIPTION: SEALED PORT MINI USB

DWG. NO. SPM-05-X-X-XXX-PF

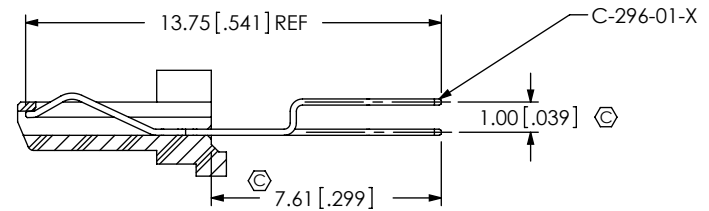
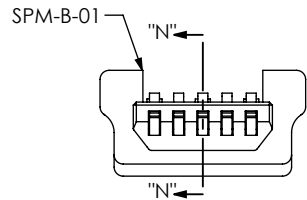
BY: T NEWTON 06/30/2009 SHEET 4 OF 7

-RA IN-PROCESS 7
ADD EPOXY-01



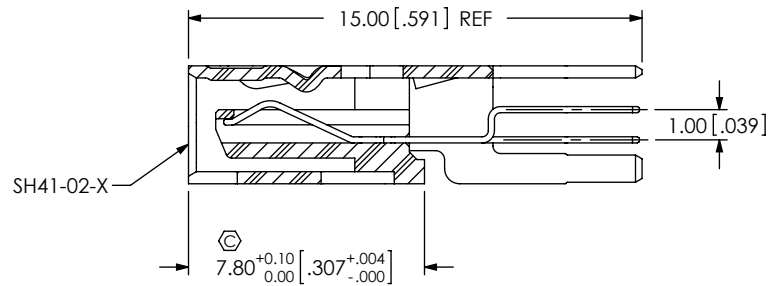
SECTION "L"-L"

-VTX IN-PROCESS 1
FILL C-296-01-X
(SAME AS -RA IN-PROCESS 3, EXCEPT AS SHOWN)

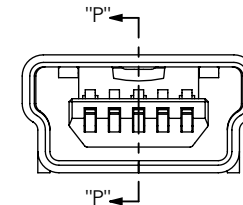


SECTION "N"-N"

-VTX IN-PROCESS 2
FILL SH41-XX-X
(SAME AS -RA IN-PROCESS 4, EXCEPT AS SHOWN)



SECTION "P"-P"



PROPRIETARY NOTE
THIS DOCUMENT CONTAINS INFORMATION CONFIDENTIAL AND PROPRIETARY TO SAMTEC, INC. AND SHALL NOT BE REPRODUCED OR TRANSFERRED TO OTHER DOCUMENTS OR DISCLOSED TO OTHERS OR USED FOR ANY PURPOSE OTHER THAN THAT WHICH IT WAS OBTAINED WITHOUT THE EXPRESSED WRITTEN CONSENT OF SAMTEC, INC.

DO NOT SCALE DRAWING

SHEET SCALE: 3:1

samtec

520 PARK EAST BLVD, NEW ALBANY, IN 47150
PHONE: 812-944-6733 FAX: 812-948-5047
e-Mail: info@SAMTEC.com code 55322

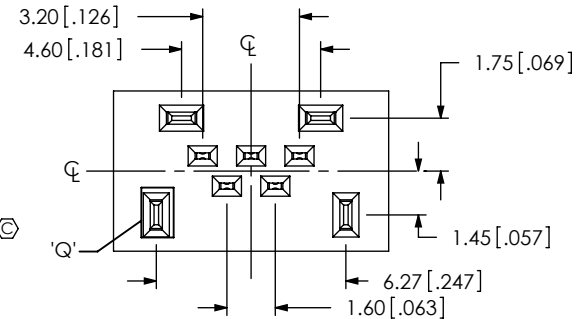
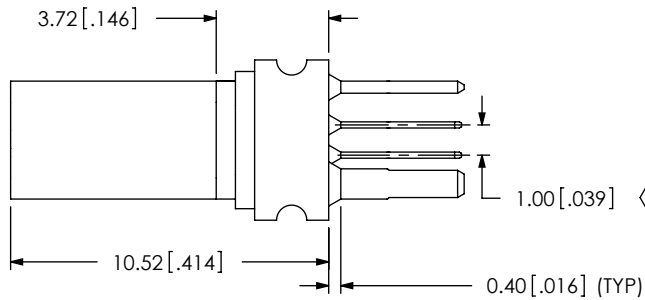
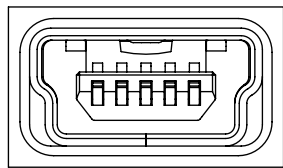
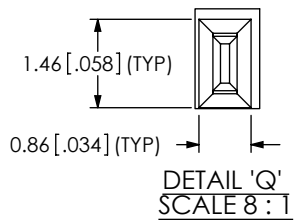
DESCRIPTION: SEALED PORT MINI USB

DWG. NO. SPM-05-X-X-XXX-PF

BY: T NEWTON 06/30/2009 SHEET 5 OF 7

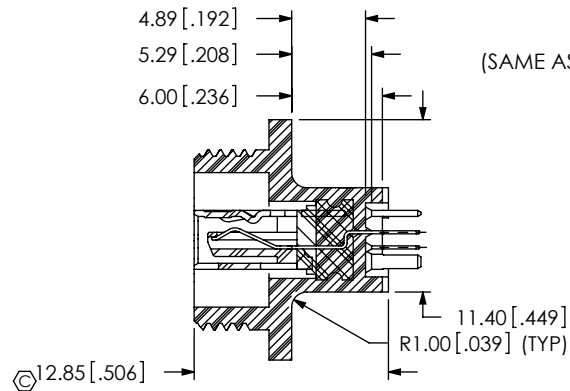
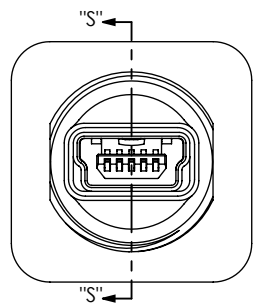
-VTX IN-PROCESS 3

ADD PREMOLD
(SAME AS -RA IN-PROCESS 5, EXCEPT AS SHOWN)

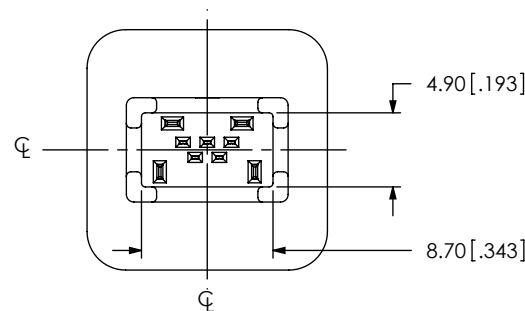


-VTX IN-PROCESS 4

ADD OVERMOLD
(SAME AS -RA IN-PROCESS 6, EXCEPT AS SHOWN)

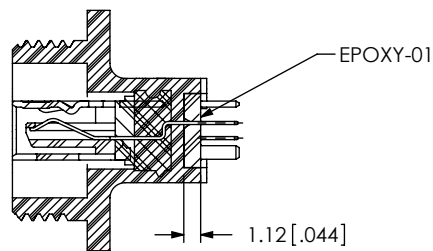
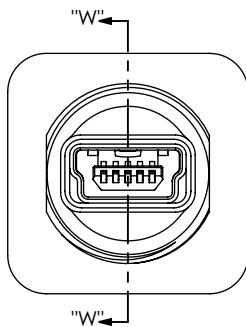


SECTION "S"- "S"
SCALE 2 : 1



-VTX IN-PROCESS 5

ADD EPOXY-01
(SAME AS -RA IN-PROCESS 7, EXCEPT AS SHOWN)



SECTION "W"- "W"
SCALE 2 : 1

PROPRIETARY NOTE

THIS DOCUMENT CONTAINS INFORMATION CONFIDENTIAL AND PROPRIETARY TO SAMTEC, INC. AND SHALL NOT BE REPRODUCED OR TRANSFERRED TO OTHER DOCUMENTS OR DISCLOSED TO OTHERS OR USED FOR ANY PURPOSE OTHER THAN THAT WHICH IT WAS OBTAINED WITHOUT THE EXPRESSED WRITTEN CONSENT OF SAMTEC, INC.

DO NOT SCALE DRAWING

SHEET SCALE: 4:1

samtec

520 PARK EAST BLVD, NEW ALBANY, IN 47150
PHONE: 812-944-6733 FAX: 812-948-5047
e-Mail info@SAMTEC.com code 55322

DESCRIPTION: SEALED PORT MINI USB

DWG. NO. SPM-05-X-X-XXX-PF

BY: T NEWTON 06/30/2009 SHEET 6 OF 7

REVISION B

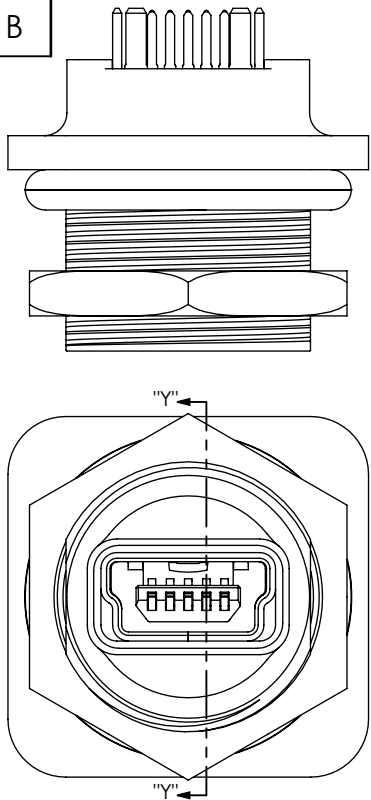
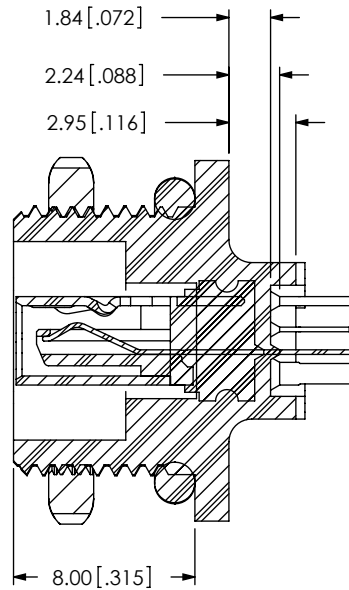
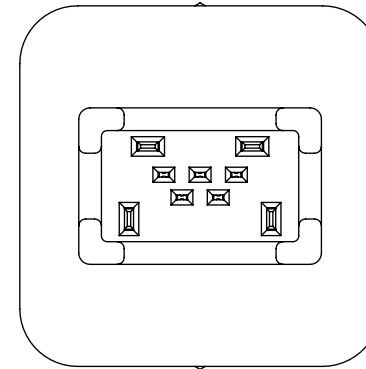
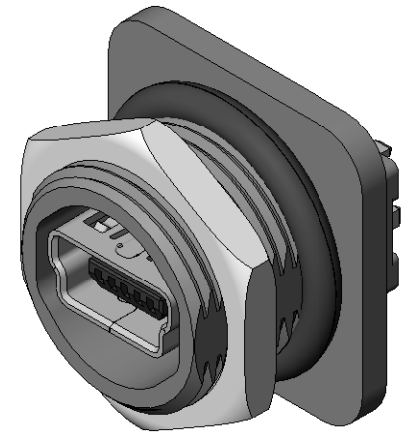


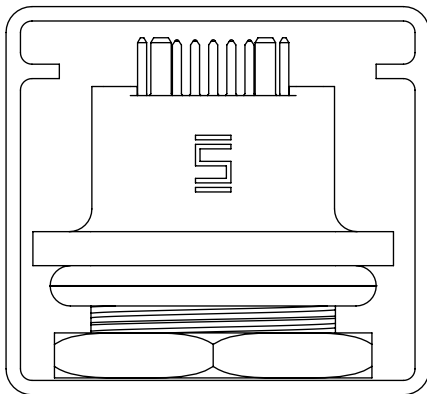
FIG. 3
SPM-05-S-B-VT2-PF SHOWN
(SAME AS FIG. 2, EXCEPT AS SHOWN)



SECTION "Y"-"Y"
SCALE 3 : 1

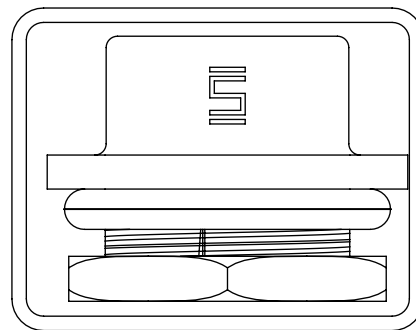


PACKAGING VIEW
-VT1 AND -VT2



TUBE: PT-YFW-12T-P
PLUG: TP-28

PACKAGING VIEW
FOR -RA



TUBE: PT-1-24-02-112
PLUG: TP-28

PROPRIETARY NOTE

THIS DOCUMENT CONTAINS INFORMATION CONFIDENTIAL AND PROPRIETARY TO SAMTEC, INC. AND SHALL NOT BE REPRODUCED OR TRANSFERRED TO OTHER DOCUMENTS OR DISCLOSED TO OTHERS OR USED FOR ANY PURPOSE OTHER THAN THAT WHICH IT WAS OBTAINED WITHOUT THE EXPRESSED WRITTEN CONSENT OF SAMTEC, INC.

DO NOT SCALE DRAWING

SHEET SCALE: 1:0.333333

samtec

520 PARK EAST BLVD, NEW ALBANY, IN 47150
PHONE: 812-944-6733 FAX: 812-948-5047
e-Mail info@SAMTEC.com code 55322

DESCRIPTION: SEALED PORT MINI USB

DWG. NO. SPM-05-X-X-XXX-PF

BY: T NEWTON 06/30/2009 SHEET 7 OF 7