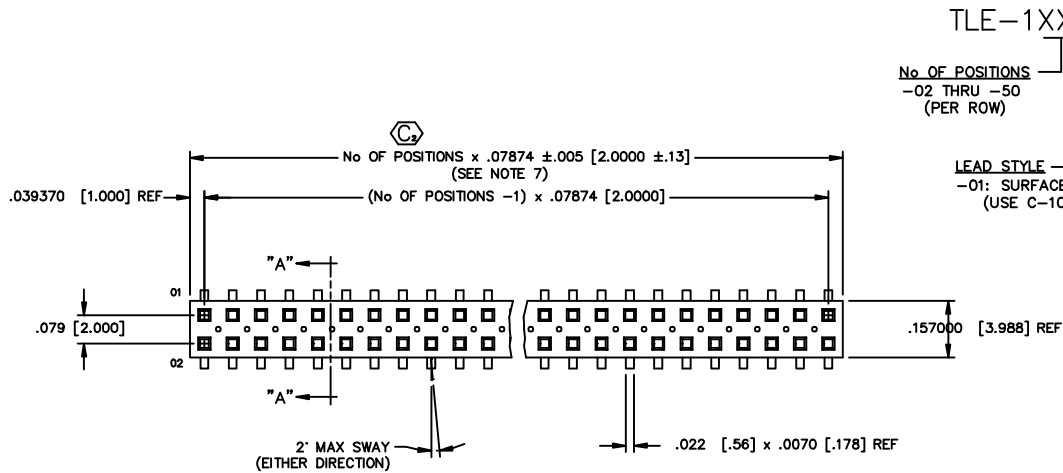


REV. Y

DIMENSIONS ARE IN INCHES		UNLESS OTHERWISE NOTED	TOLERANCES ARE:	TITLE:	DWG NO:
ONE PLACE DECIMALS ± .1	THREE PLACE DECIMALS ± .005		ANGLES ± 2°	DUAL ROW 2mm x 2mm ASSEMBLY	TLE-1XX-XX-X-DV-X
TWO PLACE DECIMALS ± .01	FOUR PLACE DECIMALS ± .0020				SHEET 1 OF 2



TLE-1XX-XX-X-DV-X

- No. OF POSITIONS**  
-02 THRU -50 (PER ROW)
- LEAD STYLE**  
-01: SURFACE MOUNT (USE C-101-01-X)
- OPTION**
- A: ALIGNMENT PIN (SEE FIG 2 & 3, SHT. 2) (USE TLE-XX-D-XX) (MOLDED TO POSITION OR STAKED) (SAMTEC DISCRETION WHICH -A PIN IS USED) (MOLDED 3 POSITION MIN. SEE FIG 2, SHT 2.) (STAKED 4 POSITION MIN. SEE FIG 3, SHT 2)
  - P: PICK & PLACE PAD OPTION (SEE FIG 4, SHT 2) (USE LMP-03) (4 POS. MIN.)
  - TR: TAPE AND REEL OPTION (AVAILABLE FOR 02 THROUGH 37 POSITIONS ONLY)
  - K: POLYAMIDE FILM PAD (3 POS MIN) (.005 [.13] THICKNESS WITH SILICONE ADHESIVE) (SEE FIGURE 5, SHEET 2)
- BODY SPECIFICATION**
- PLATING SPECIFICATION**  
-G: 10μ" GOLD ON ENTIRE CONTACT

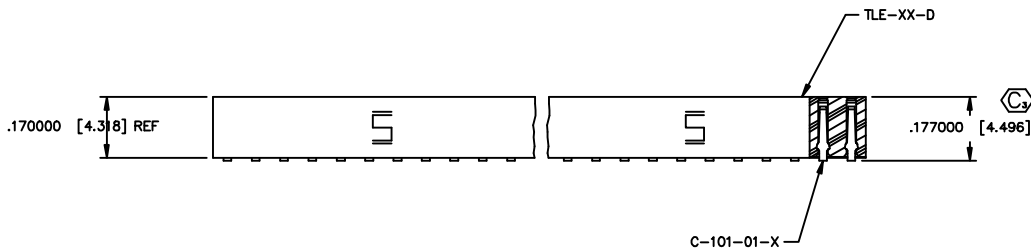
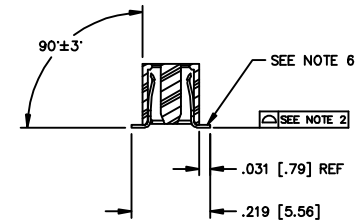


FIG. 1



SECT. "A-A"

NOTES:

1. MINIMUM PUSHOUT FORCE: .4 lb.
2. COPLANARITY; POS -02 THRU -26: .004  
POS -27 THRU -50: .006
3. (C3) REPRESENTS A CRITICAL DIMENSION
4. ALL POSITIONS TO BE PACKAGED IN TUBES.
5. FOR EVERY FINISHED PART, ONE POSITION WILL BE LOST WHEN CUTTING BODY TO LENGTH.
6. BURR ALLOWANCE: .003 [.08] MAX
7. CUT FLASH TO BE .010 [.25] MAX WITH NO FLASH ALLOWED IN HOLES OR EXTENDING BELOW LEADS.

PATENT NUMBERS  
5713755 / 5961339

DO NOT SCALE FROM THIS PRINT.

**PROPRIETARY NOTE**  
THIS DOCUMENT CONTAINS INFORMATION CONFIDENTIAL AND PROPRIETARY TO SAMTEC INC. AND SHALL NOT BE REPRODUCED OR TRANSMITTED TO OTHER DOCUMENTS OR DISCLOSED TO OTHERS OR USED FOR ANY PURPOSE OTHER THAN THAT FOR WHICH IT WAS OBTAINED WITHOUT THE EXPRESS WRITTEN CONSENT OF SAMTEC INC.

MATERIAL:  
BODY:  
VECTRA E1301  
COLOR: BLACK  
TERMINAL:  
PHOSPHER BRONZE

**samtec**

520 PARK EAST BLVD. NEW ALBANY, INDIANA 47150  
PHONE (812) 944-6733 P.O. BOX 1147  
CODE 55322

MADE BY: D PURVIS 01-20-97

TLE-1XX-XX-X-DV-X  
SHEET 1 OF 2

PLOT SCALE 1=2

REV. Y

DIMENSIONS ARE IN INCHES UNLESS OTHERWISE NOTED TOLERANCES ARE:  
 ONE PLACE DECIMALS ± .1 THREE PLACE DECIMALS ± .005 ANGLES ± 2°  
 TWO PLACE DECIMALS ± .01 FOUR PLACE DECIMALS ± .0020

TITLE: DUAL ROW 2mm x 2mm ASSEMBLY

DWG NO: TLE-1XX-XX-X-DV-X  
 SHEET 2 OF 2

FIG. 2  
 -A: OPTION (SEE NOTE 5)  
 MOLDED ALIGNMENT PIN (3 POS. MIN.)  
 (DIFFERENT AS SHOWN, OTHERWISE SAME AS FIG. 1)

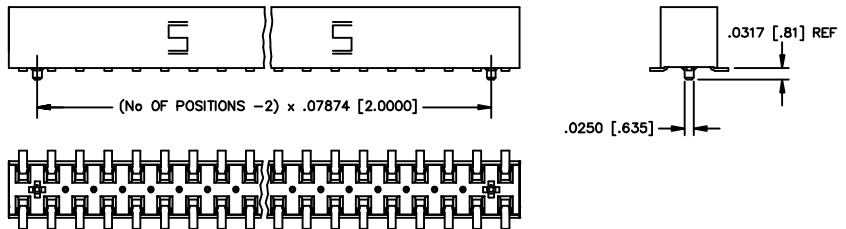


FIG. 3  
 -A: OPTION (SEE NOTE 5)  
 STAKED ALIGNMENT PIN (4 POS. MIN.)  
 (DIFFERENT AS SHOWN, OTHERWISE SAME AS FIG. 1)

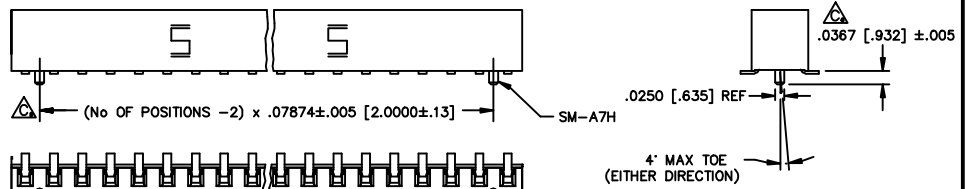


FIG. 4  
 -P: OPTION  
 (4 POS. MIN.)  
 PICK & PLACE PAD  
 (DIFFERENT AS SHOWN, OTHERWISE SAME AS FIG. 1)

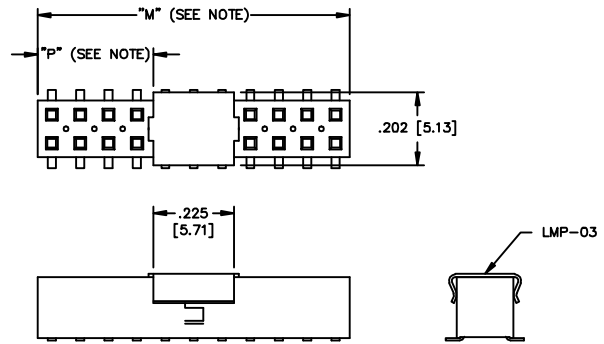
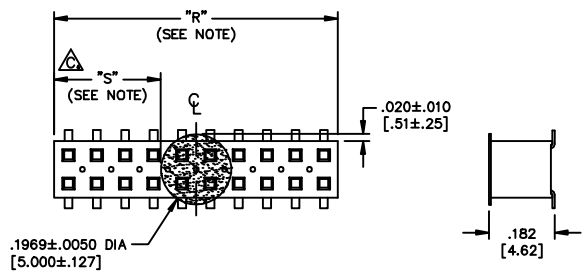


FIGURE 5  
 -K: POLYAMIDE FILM PAD  
 (3 POS. MIN.)



NOTE: "R" = USED MEASURED DIMENSION (REF)  
 "S" =  $\{("R" - .1969 [5.00])/2\} \pm .020 [5.1]$

PACKAGING VIEW

TABLE 1		
OPTION	PACKAGING TUBE	PLUG
ALL OPTIONS	PT-1-24-01-63	TP-24



**PROPRIETARY NOTE**  
 THIS DOCUMENT CONTAINS INFORMATION CONFIDENTIAL AND PROPRIETARY TO SAMTEC INC. AND SHALL NOT BE REPRODUCED OR TRANSMITTED TO OTHER DOCUMENTS OR DISCLOSED TO OTHERS OR USED FOR ANY PURPOSE OTHER THAN THAT FOR WHICH IT WAS OBTAINED WITHOUT THE EXPRESS WRITTEN CONSENT OF SAMTEC INC.

NOTE: "M" = USED MEASURED DIMENSION (REF)  
 "P" =  $(("M" - .225 [5.71])/2) \pm .020 [5.1]$

EXSPROD\ASSEMBLY\2MM TLE-ASM2

**samtec**

520 PARK EAST BLVD. NEW ALBANY, INDIANA 47150  
 PHONE (812) 944-6733 P.O. BOX 1147  
 CODE 55322

MADE BY: D PURVIS 01-20-97 TLE-1XX-XX-X-DV-X  
 SHEET 2 OF 2

PLOT SCALE 1=2