

# PC board connectors, pluggable, rising cage connection, spacings: 7.50/7.62 mm

## wiecon PCB

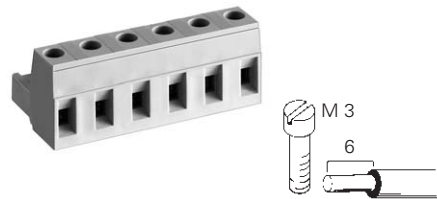
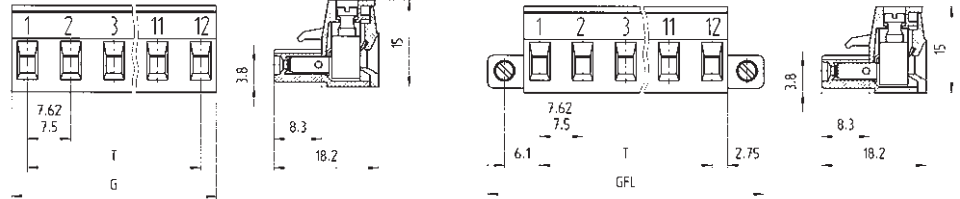
codable  
2.5 mm<sup>2</sup>

Rated cross section:  
2.5 mm<sup>2</sup>

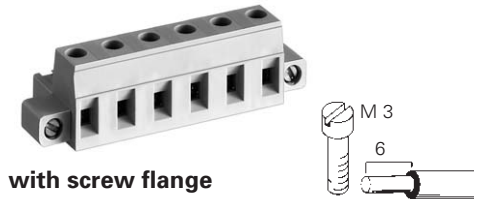
Rated current:  
12 A

Connection range:  
0.14 – 2.5 mm<sup>2</sup> solid / fine stranded

400 V/4 kV/3 – Overvoltage category III  
690 V/4 kV/2 – Overvoltage category II  
1000 V/4 kV/1 – Overvoltage category I



**Type 8313 B/..., 8413 B/...**  
plug-in 180° to wire entry



**Type 8313 B/... F, 8413 B/... F**  
plug-in 180° to wire entry

Rated voltages: VDE 0110  
UL ratings  
CSA ratings  
Approvals

No. 22 – 12 AWG      300 V      15 A  
No. 22 – 12 AWG      300 V      15 A

No. 22 – 12 AWG      300 V      15 A  
No. 22 – 12 AWG      300 V      15 A



Std. pack	GFL	G	T	Poles	Part no.	Part no.	Part no.	Part no.
<b>Spacing: 7.50 mm</b>					Type 8313			
					unmarked	marked	unmarked	marked
100	25.54	13.00	7.50	2	25.360.3253.0	25.360.0253.0	25.324.2253.0	25.324.0253.0
100	33.04	20.50	15.00	3	25.360.3353.0	25.360.0353.0	25.324.2353.0	25.324.0353.0
50	40.54	28.00	22.50	4	25.360.3453.0	25.360.0453.0	25.324.2453.0	25.324.0453.0
50	48.04	35.50	30.00	5	25.360.3553.0	25.360.0553.0	25.324.2553.0	25.324.0553.0
50	55.54	43.00	37.50	6	25.360.3653.0	25.360.0653.0	25.324.2653.0	25.324.0653.0
50	63.04	50.50	45.00	7	25.360.3753.0	25.360.0753.0	25.324.2753.0	25.324.0753.0
50	70.54	58.00	52.50	8	25.360.3853.0	25.360.0853.0	25.324.2853.0	25.324.0853.0
50	78.04	65.50	60.00	9	25.360.3953.0	25.360.0953.0	25.324.2953.0	25.324.0953.0
50	85.54	73.00	67.50	10	25.360.4053.0	25.360.1053.0	25.324.3053.0	25.324.1053.0
50	93.04	80.50	75.00	11	25.360.4153.0	25.360.1153.0	25.324.3153.0	25.324.1153.0
50	100.54	88.00	82.50	12	25.360.4253.0	25.360.1253.0	25.324.3253.0	25.324.1253.0
<b>Spacing: 7.62 mm</b>					Type 8413			
					unmarked	marked	unmarked	marked
100	25.66	13.12	7.62	2	25.380.3253.0	25.380.0253.0	25.324.6253.0	25.324.0253.0
100	33.28	20.74	15.24	3	25.380.3353.0	25.380.0353.0	25.324.6353.0	25.324.0353.0
50	40.90	28.36	22.86	4	25.380.3453.0	25.380.0453.0	25.324.6453.0	25.324.0453.0
50	48.52	35.98	30.48	5	25.380.3553.0	25.380.0553.0	25.324.6553.0	25.324.0553.0
50	56.14	43.60	38.10	6	25.380.3653.0	25.380.0653.0	25.324.6653.0	25.324.0653.0
50	63.76	51.22	45.72	7	25.380.3753.0	25.380.0753.0	25.324.6753.0	25.324.0753.0
50	71.38	58.84	53.34	8	25.380.3853.0	25.380.0853.0	25.324.6853.0	25.324.0853.0
50	79.00	66.46	60.96	9	25.380.3953.0	25.380.0953.0	25.324.6953.0	25.324.0953.0
50	86.62	74.08	68.58	10	25.380.4053.0	25.380.1053.0	25.324.7053.0	25.324.1053.0
50	94.24	81.70	76.20	11	25.380.4153.0	25.380.1153.0	25.324.7153.0	25.324.1153.0
50	101.86	89.32	83.82	12	25.380.4253.0	25.380.1253.0	25.324.7253.0	25.324.1253.0
<b>Accessories:</b>								
Coding piece (strip)	100				05.561.9153.0	05.561.9153.0		