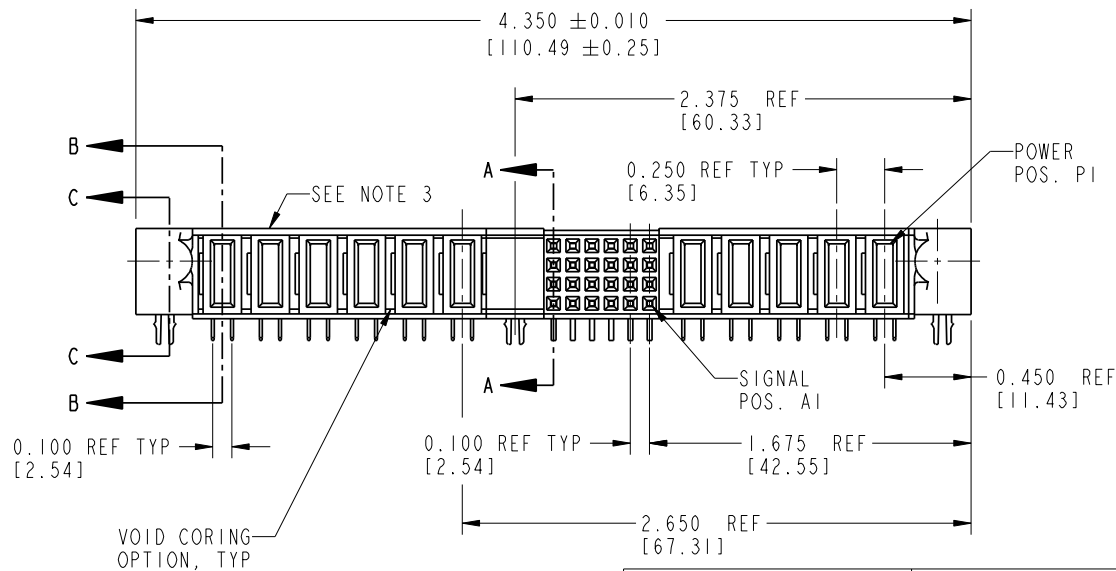
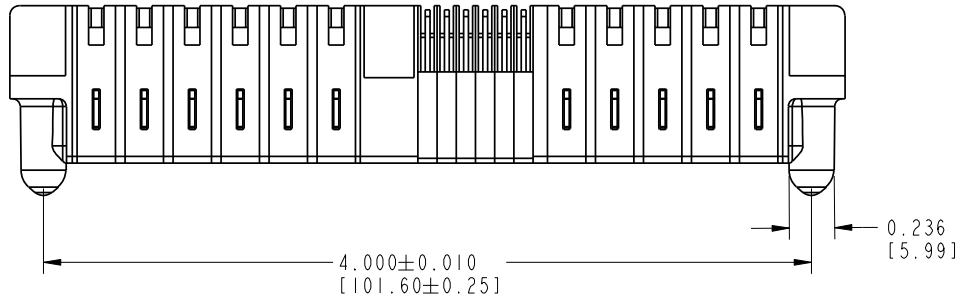



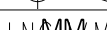
Tous droits strictement reserves. Reproduction ou communication a des tiers interdite sous quelque forme que ce soit sans autorisation écrite du propriétaire. Propriété de c FCI. Droits de reproduction FCI.

All rights strictly reserved. Reproduction or issue to third parties in any form whatever is not permitted without written authority from the proprietor. Property of FCI. Copyright FCI.

FCI

PRODUCT NUMBER
SEE SHEET 3



mat'l code				NOTE 1		tolerances unless otherwise specified			CUSTOMER		A FCI www.fciconnect.com	
lir	ecn no.	dr	date	linear	.XX±.01/.X±.3			projection 	title 5P + 24S + 1M + 6P R/A SOLDER RECEPT.	product family PwrBlade	code 213	
N	DG05-0242	SJ	07/25/05		.XXX±.005/.XX±.13							
P	DG05-0313	SJ	09/05/05	angles	.XXX±.0020/.XXX±.051				scale 1:1	size A	dwg no 51625	
R	DG05-0338	SW	09/19/05		0° ± 2°							
S	DG05-0550	GuoJM	12/16/05	dr	D. WOLFORD	01/21/99	INMMMM	1:1	A	51625	sheet 1 of 4	
				enrg	J. BROWN	01/21/99						
				chr	J. BROWN	01/21/99						
				appd	J. BROWN	01/21/99						
sheet index	revision sheet	S	S	S	1	2	3					

Pro/E

PDM: Rev:5

STAT:US:Released

Printed: Aug 11, 2007

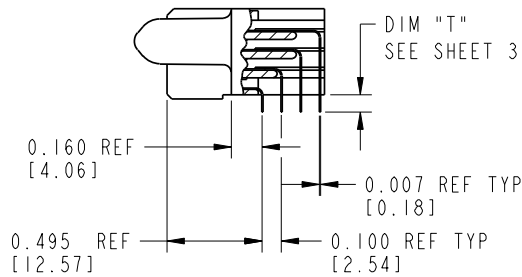
Tous droits strictement reserves. Reproduction ou communication a des tiers interdite sous quelque forme que ce soit sans autorisation écrite du propriétaire. Propriété de c FCI. Droits de reproduction FCI.

All rights strictly reserved. Reproduction or issue to third parties in any form whatever is not permitted without written authority from the proprietor. Property of FCI. Copyright FCI.

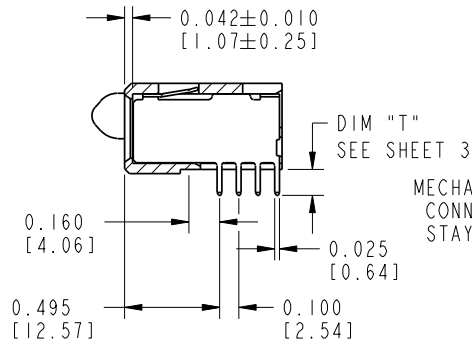
FCI

PRODUCT NUMBER

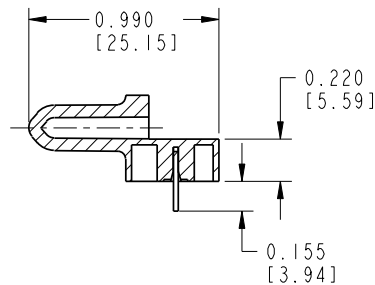
SEE SHEET 3



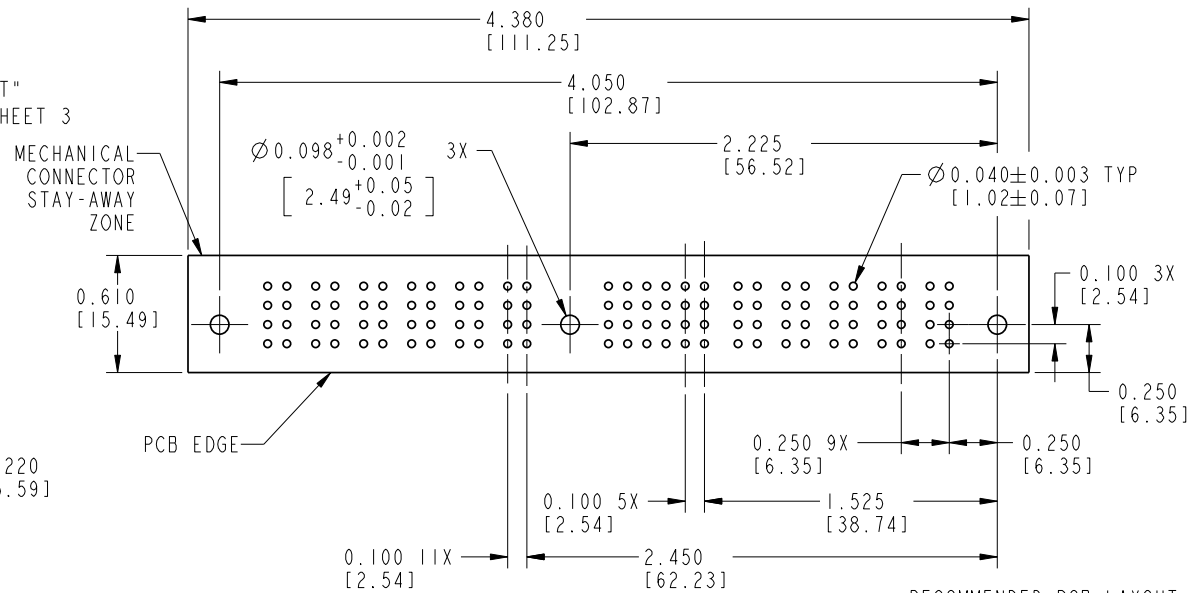
SECTION A-A



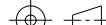

SECTION B-B



SECTION C-C



RECOMMENDED PCB LAYOUT

mat'l code				NOTE 1		tolerances unless otherwise specified		CUSTOMER		A FCI		www.fciconnect.com	
lir	ecn no.	dr	date	linear	.XX±.01/.X±.3		projection 	COPY	title 5P + 24S + 1M + 6P R/A SOLDER RECEPT.	product family PwrBlade	code 213		
S					.XXX±.005/.XX±.13								
					.XXXX±.0020/.XXX±.051								
				angles	0° ± 2°		INCH/MM 	scale 1:1	size A	dwg no 51625	sheet 2		
				dr	D. WOLFORD 01/21/99								
				chr	J. BROWN 01/21/99								
				appd	J. BROWN 01/21/99								
sheet index		revision sheet											

Pro/E

PDM: Rev:5

STAT: Released

Printed: Aug 11, 2007

PRODUCT NUMBER
SEE TABLE

CODE	DIM "T"		DIM "T"		CONTACT TYPE
	+0.005 [0.12]	-0.010 [0.25]	±0.010 [0.25]		
E	-	-	0.135	[3.43]	SIGNAL
F	-	-	0.135	[3.43]	SIGNAL
G	-	-	0.135	[3.43]	SIGNAL
H	-	-	0.135	[3.43]	SIGNAL
J	0.090	[2.29]	-	-	SIGNAL
K	0.090	[2.29]	-	-	SIGNAL
L	0.090	[2.29]	-	-	SIGNAL
M	0.090	[2.29]	-	-	SIGNAL
PA	-	-	0.135	[3.43]	POWER
PB	0.090	[2.29]	-	-	POWER
HA	N/A	[N/A]	-	-	HOLD-DOWN

PRODUCT No.	ROWS	POWER							SIGNAL					POWER							
		E2	P11	P10	P9	P8	P7	P6	M1	6	5	4	3	2	1	P5	P4	P3	P2	P1	E1
51625-XX001-- NOTE: 2	D C B A																				

PRODUCT No.	ROWS	POWER							SIGNAL					POWER							
		E2	P11	P10	P9	P8	P7	P6	MI	6	5	4	3	2	1	P5	P4	P3	P2	P1	E1
51625-XX002-- NOTE: 2	D C B A	<div><div></div><div>HA</div></div>	<div>PA</div>	<div>PA</div>	<div>PA</div>	<div>PA</div>	<div>PA</div>	<div>PA</div>	<div>HA</div>	<div>HHHHHHH</div> <div>GGGGGGG</div> <div>FFFFFFF</div> <div>EEEEEEE</div>	<div>PA</div>	<div>PA</div>	<div>PA</div>	<div>PA</div>	<div>PA</div>	<div></div>	<div></div>	<div></div>	<div></div>	<div></div>	<div><div></div><div>HA</div></div>

mat'l code				NOTE 1		tolerances unless otherwise specified		CUSTOMER		A FCI www.fciconnect.com			
lir	ecn no.	dr	date	linear	angles	.XX±.01/.X±.3		COPY		title			
S						.XXX±.005/.XX±.13		projection		5P + 24S + 1M + 6P			
						.XXX±.0020/.XXX±.051				R/A SOLDER RECEPT.			
						0° ± 2°		INCH/MM		product family		code	
				dr		D. WOLFORD 01/21/99				PwrBlade		213	
				enrg		J. BROWN 01/21/99		scale		size		sheet	
				chr		J. BROWN 01/21/99		1:1		dwg no		3	
				appd		J. BROWN 01/21/99				A		51625	
sheet index	revision			sheet									

PRODUCT NUMBER

SEE SHEET 3

CONNECTOR NOTES:

- HOUSING MATERIAL: UL 94 V-0 GLASS FILLED HIGH TEMP THERMOPLASTIC
POWER CONTACT MATERIAL: COPPER ALLOY
SIGNAL CONTACT MATERIAL: COPPER ALLOY

- PLATING: (51625-XXXXX STAND OFF 51625-XX001 AND 51625-XX002)
51625-XXXXX Signal Pin: 30u"/0.76um Au OVER 50u"/1.27um Ni ON THE CONTACT AREA,
AND 100u"/2.54um SnPb PLATING OVER 50u"/1.27um Ni ON THE TERMINATION SECTION.
Power Pin: 30u"/0.76um Au OVER 50u"/1.27um Ni ON THE CONTACT AREA,
AND 100u"/2.54um SnPb PLATING OVER 50u"/1.27um Ni ON THE TERMINATION SECTION.

51625-XXXXXLF Signal Pin: 30u"/0.76um Au OVER 50u"/1.27um Ni ON THE CONTACT AREA,
AND 78u"/2.00um Sn PLATING OVER 50u"/1.27um Ni ON THE TERMINATION SECTION.
Power Pin: 30u"/0.76um Au OVER 50u"/1.27um Ni ON THE CONTACT AREA,
AND 78u"/2.00um Sn PLATING OVER 50u"/1.27um Ni ON THE TERMINATION SECTION.

PART NUMBER 51625-XXXXXLF MEETS EUROPEAN UNION DIRECTIVE AND OTHER COUNTRY REGULATIONS AS DESCRIBED IN GS-22-008.

THE HOUSING WILL WITHSTAND EXPOSURE TO 260° PEAK TEMPERATURE FOR 10 SECONDS IN A WAVE SOLDER APPLICATION WITH A CIRCUIT BOARD.

- MANUFACTURER'S NAME, P/N, AND DATE CODE TO APPEAR ON THIS SURFACE
- PRODUCT SPECIFICATION GS-12-149

PCB NOTES:

- ALL DIMENSIONS ARE BASIC UNLESS OTHERWISE SPECIFIED.
- ALL THROUGH HOLES ARE LOCATED WITH A TRUE POSITION OF 0.004 [0.10]
- ALL HOLE DIAMETERS ARE FINISHED HOLE SIZE
- Ø0.098[2.49] THROUGH HOLES ARE UNPLATED.
- Ø0.0453±0.0010 [1.151±0.025] DRILLED HOLES PLATED WITH 0.0003 [0.008] MIN SnPb OVER 0.001 [0.03] TO 0.003 [0.08] Cu PLATING TO ACHIEVE A Ø0.040±0.003 [1.02±0.07] HOLE.

CONFIDENTIAL

mat'l code				NOTE 1		tolerances unless otherwise specified		CUSTOMER		A FCI www.fciconnect.com			
lfr	ecn no.	dr	date	linear		.XX±.01/.X±.3		COPY		title			
S						.XXX±.005/.XX±.13		projection		5P + 24S + 1M + 6P			
						.XXX±.0020/.XXX±.051				R/A SOLDER RECEPT.			
				angles		0° ± 2°		INCH/MM		product family			
				dr		D. WOLFORD 01/21/99				PRODUCT-FAMILY: 3			
				enrg		J. BROWN 01/21/99				code			
				chr		J. BROWN 01/21/99		scale		size			
				appd		J. BROWN 01/21/99				dwg no			
sheet index		revision sheet						1:1		A	51625		213
												4	