

**SPECIFICATIONS**

**DDR Connector**

**Mechanical**

**Contact Retention Force:** 0.75Lbs (0.34kg) min.  
**Durability:** 25 Cycles  
**Vibration:** Pass MIL-STD-1344A, method 2005 condition

**AT050 Series**

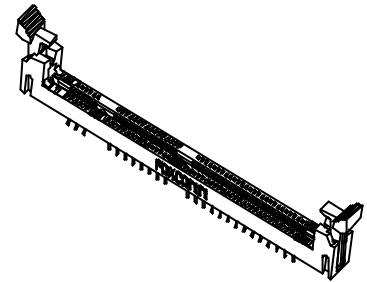
**Vertical, T/H Type**  
**1.27mm [.050"] Pitch**  
**100 Pos.**

**Electrical**

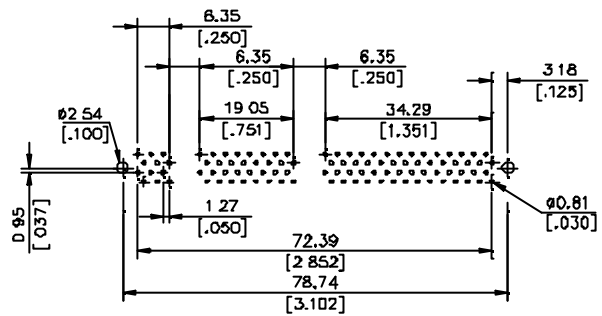
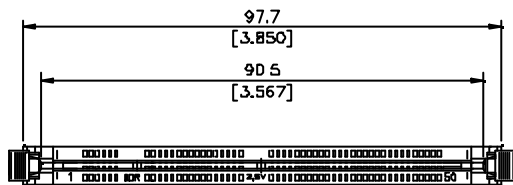
**Voltage Rating:** 250V  
**Current Rating:** 1.0A max.  
**Dielectric Withstanding Voltage:** 500V  
**Insulation Resistance:** 1000MW min.  
**Low Level Contact Resistance (Dry Circuit):** 30mW max. initial

**Physical**

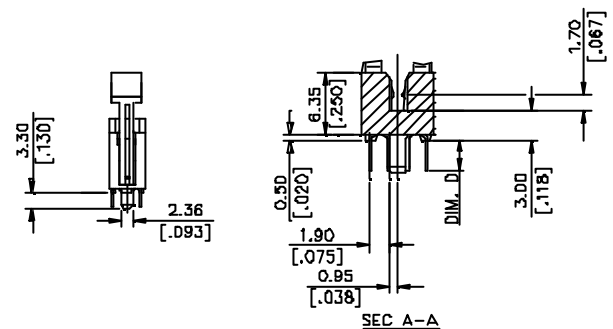
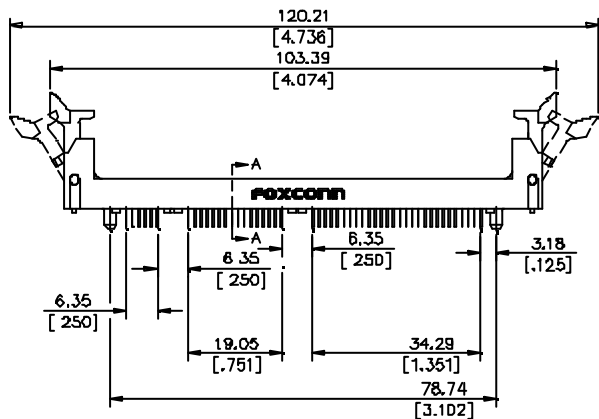
**Housing:** Thermoplastic, UL 94V-0 rated in Black Color  
**Ejector Lever:** Thermoplastic, UL 94V-0 rated in Ivory Color  
**Contact:** Copper alloy  
**Operating Temperature:** 0 to +85



**DRAWING**

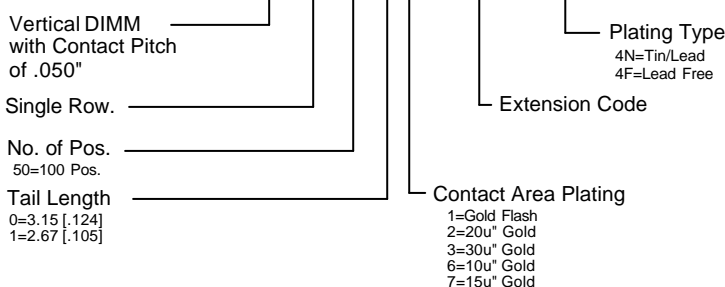


RECOMMENDED P.C.B LAYOUT



**ORDERING INFORMATION**

PRODUCT NO.: AT050\*\*-\*-\*-\*\*



AT0500*-D5-4F	2.5 V	DDR	315 [.124]
AT0501*-D5-4F	2.5 V	DDR	267 [.105]
P/N	VOLTAGE MARKING	LEFT KEY ZONE	DIM D