

SPECIFICATIONS

DDR II Connector

Mechanical

Contact Retention Force: 0.75Lbs (0.34kgf) min. per Contact
Durability: 25 Cycles
Dram Board Insertion Force: 3 oz max. per Contact

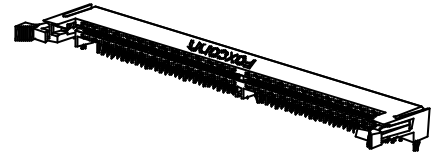
AU040 Series
Right Angle, T/H Type
1.00mm [.039"] Pitch
240 Pos.

Electrical

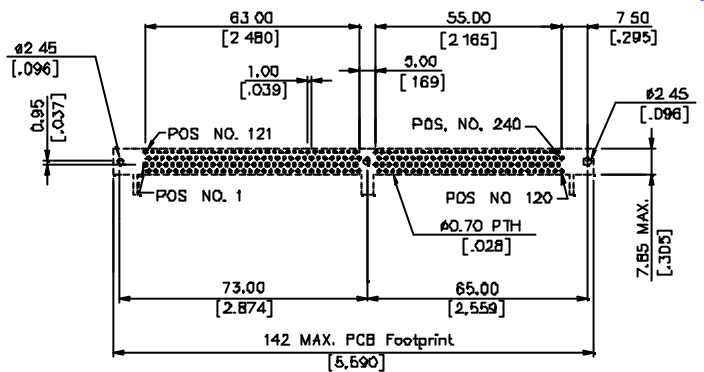
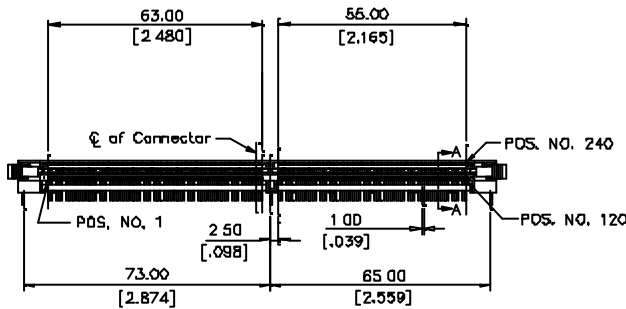
Voltage Raging: 250V AC
Current Rating: 1.0A max., 30 max., in Temperature Rise
Insulation Resistance: 1000MW min. initial
Dielectric Withstanding Voltage: 500V AC at Sea Level
Low Level Contact Resistance: 30mW max. initial

Physical

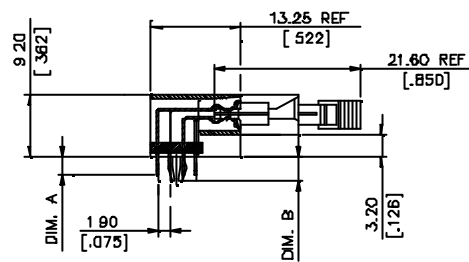
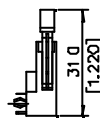
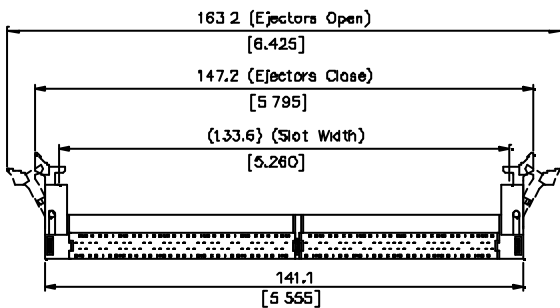
Housing: Thermoplastic, UL 94V-0 rated in Black Color
Contact: Copper alloy
Ejector: Thermoplastic, UL 94V-0 rated in Ivory or Natural Color
Metal Hold Down: Copper alloy
Operating Temperature: -55 to +105



DRAWING



RECOMMENDED P.C.B. LAYOUT



SEC A-A

ORDERING INFORMATION

PRODUCT NO.: AU040**--**--**

Memory Socket _____
 Right Angle _____
 No. of Pos. _____
 Tail Length _____
 PLATING TYPE
 4N=TIN/LEAD
 4F=LEAD FREE
 Extension Code _____
 Contact Area Plating
 1=Gold Flash
 2=20u" Gold
 3=30u" Gold
 6=10u" Gold
 7=15u" Gold

AU0400*-R3-**-**	240	1.8V	2 67 [.105]	3.78 [.149]
AU0401*-R3-**-**		1.8V	3 18 [.125]	4.57 [.180]
P/N	POS	VOLTAGE MARKING	DIM A	DIM B