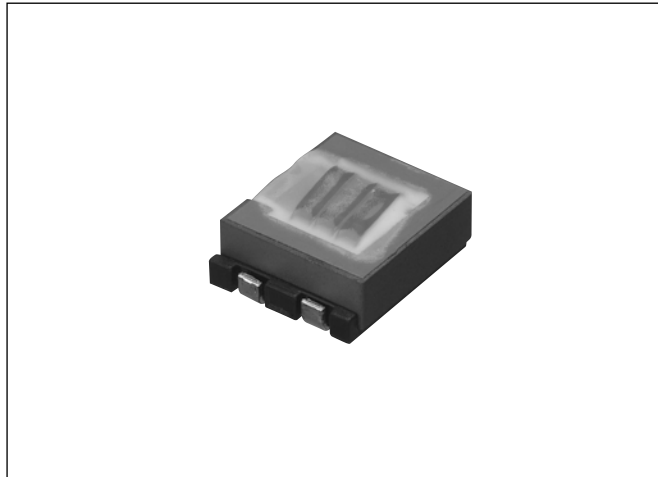


Power inductors CD-C-1314B series



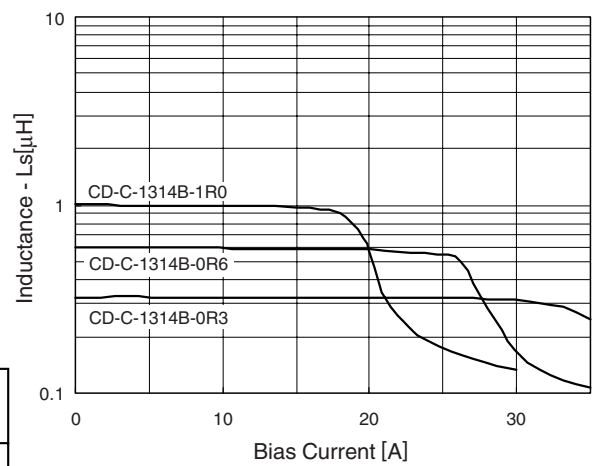
Features

- Small size and high power by using a new-shape core and straight-angle lines
- Reflow soldering
- SMT compatibility
- Original coil design through CAE and Spice simulation

Applications

- DC-DC converters
- Power supplies

Typical DC overlapping characteristics



Specifications

Withstand voltage	DC250V, 1 min.(core-coil)
Insulation resistance	100MΩ min. (DC250V)
Operating temperature	-25°C ~ +105°C (including self-temperature rise)

Standard models

Model No.	Rated current** [A]	Inductance [μH] (100KHz, 20°C)	Inductance error	DC resistance [mΩ]
CD-C-1314B-0R3	35	0.3	±20%	1.4
CD-C-1314B-0R6	26	0.6	±20%	2.3
CD-C-1314B-1R0	18	1.0	±20%	4.9

Rated current**: The current at which the inductance stands 30% below its initial value (Ta = 25°C) in DC overlapping characteristics.

Shapes and dimensions

