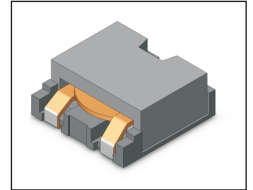


# SMT Power Inductor

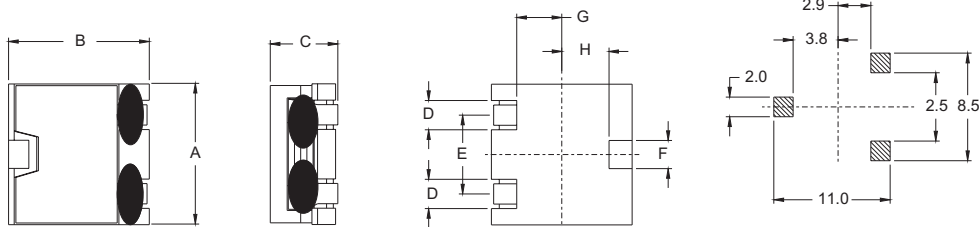
## HMU1055 Type

### Features

- RoHS compliant.
- Low profile, SMD type.
- High current.
- Magnetic shielded.
- High energy storage and low DCR.
- Provided with embossed carrier tape packing.
- Ideal for power source circuits, DC-DC converter, DC-AC inverters inductor applications.
- In addition to the standard versions shown here, customized inductors are available to meet your exact requirements.



### Mechanical Dimension :



UNIT : mm/inch  
 A = 10.40/0.409 Max.  
 B = 10.40/0.409 Max.  
 C = 5.50/0.217 Max.  
 D = 2.60/ 0.102  
 E = 5.50/ 0.217  
 F = 1.40/ 0.055  
 G = 2.90/ 0.114  
 H = 3.80/ 0.150

### Electrical Characteristics : At 25°C: 100KHz, 1V

PART NO.	L <sup>1</sup> (uH)	Li (uH) MIN.	DCR (mΩ) MAX.	I <sub>sat</sub> <sup>2</sup> (A dc)	I <sub>rms</sub> <sup>3</sup> (A dc)
HMU1055-OR2	0.20	0.16	1.00	48.0	31.0
HMU1055-OR2LD	0.20	0.16	0.65	48.0	35.0
HMU1055-R25	0.25	0.20	1.00	36.0	31.0
HMU1055-OR3	0.30	0.24	1.00	30.0	31.0
HMU1055-OR4	0.40	0.32	1.30	32.0	25.0
HMU1055-R56	0.56	0.45	1.30	20.0	25.0
HMU1055-OR6	0.60	0.48	1.30	17.0	25.0
HMU1055-OR7	0.70	0.56	1.30	17.0	25.0
HMU1055-OR7HS	0.70	0.56	2.00	25.0	19.0
HMU1055-OR8	0.80	0.64	2.00	16.0	19.0
HMU1055-1R0	1.00	0.80	2.00	15.0	19.0
HMU1055-1R0HS	1.00	0.80	4.00	20.0	13.5
HMU1055-1R5	1.50	1.08	4.00	15.0	13.5
HMU1055-1R5HS	1.50	1.20±20%	6.80	22.0	11.0
HMU1055-2R2	2.20	1.65	4.80	12.0	12.5
HMU1055-2R2HS	2.20	1.76	6.80	14.0	11.0
HMU1055-2R5	2.50	2.00	4.80	7.8	12.5
HMU1055-3R0HS	3.00	2.40	9.60	12.0	8.5
HMU1055-4R7	4.70	3.76	11.00	8.0	8.0
HMU1055-5R7	5.70	4.56	11.00	5.8	8.0

1. Tolerance of inductance is ± 20%..
2. I<sub>sat</sub> is the DC current which cause the inductance drop to Li.
3. I<sub>rms</sub> is the DC current which cause the surface temperature of the part increase less than 45°C.
4. Operating temperature : -20°C to 105°C ( including self-temperature rise ).



**DELTA ELECTRONICS, INC.**

(TAOYUAN PLANT CPBG) 252, SAN YING ROAD, KUEISAN INDUSTRIAL ZONE, TAOYUAN SHIEN, 333, TAIWAN, R.O.C.

TEL: 886-3-3591968; FAX: 886-3-3591991

<http://www.deltaww.com>