

Shielded Power Inductors – MSS5131



- 5.1 × 5.1 mm footprint; 3.1mm high shielded inductors
- Low DCR and excellent current handling

Designer's Kit C362 contains 3 of each value

Core material Ferrite

Core and winding loss See www.coilcraft.com/coreloss

Terminations RoHS compliant matte tin over nickel over phos bronze (current production) or gold over nickel over phos bronze (prior production). Other terminations available at additional cost.

Weight 0.20 – 0.24 g

Ambient temperature –40°C to +85°C with Irms current, +85°C to +125°C with derated current

Storage temperature Component: –40°C to +125°C.

Tape and reel packaging: –40°C to +80°C

Resistance to soldering heat Max three 40 second reflows at +260°C, parts cooled to room temperature between cycles

Moisture Sensitivity Level (MSL) 1 (unlimited floor life at <30°C / 85% relative humidity)

Failures in Time (FIT) / Mean Time Between Failures (MTBF)

38 per billion hours / 26,315,789 hours, calculated per Telcordia SR-332

Packaging 600/7" reel, 2500/13" reel; Plastic tape: 12 mm wide, 0.35 mm thick, 8 mm pocket spacing, 3.25 mm pocket depth

PCB washing Tested with pure water or alcohol only. For other solvents, see Doc787_PCB_Washing.pdf.

| Part number ¹ | Inductance ² ±20% (µH) | DCR max (Ohms) | SRF typ ³ (MHz) | Isat (A) ⁴ | | | Irms (A) ⁵ | |
|--------------------------|--------------------------------------|----------------------|----------------------------------|-----------------------|-------------|-------------|-----------------------|--------------|
| | | | | 10% drop | 20% drop | 30% drop | 20°C rise | 40°C rise |
| MSS5131-222ML_ | 2.2 | 0.020 | 65.0 | 1.76 | 2.08 | 2.30 | 2.00 | 3.30 |
| MSS5131-332ML_ | 3.3 | 0.028 | 60.0 | 1.33 | 1.58 | 1.73 | 1.60 | 2.90 |
| MSS5131-472ML_ | 4.7 | 0.038 | 48.0 | 1.08 | 1.32 | 1.42 | 1.40 | 2.50 |
| MSS5131-562ML_ | 5.6 | 0.042 | 44.0 | 1.00 | 1.20 | 1.30 | 1.30 | 2.30 |
| MSS5131-682ML_ | 6.8 | 0.050 | 42.0 | 0.98 | 1.14 | 1.24 | 1.20 | 2.16 |
| MSS5131-822ML_ | 8.2 | 0.058 | 40.0 | 0.90 | 1.04 | 1.18 | 1.10 | 2.00 |
| MSS5131-103ML_ | 10 | 0.070 | 38.0 | 0.85 | 0.98 | 1.13 | 1.00 | 1.90 |
| MSS5131-123ML_ | 12 | 0.080 | 35.0 | 0.72 | 0.85 | 0.94 | 0.97 | 1.60 |
| MSS5131-153ML_ | 15 | 0.100 | 32.0 | 0.67 | 0.78 | 0.86 | 0.94 | 1.50 |
| MSS5131-183ML_ | 18 | 0.120 | 26.0 | 0.61 | 0.72 | 0.79 | 0.89 | 1.40 |
| MSS5131-223ML_ | 22 | 0.145 | 22.0 | 0.54 | 0.64 | 0.70 | 0.87 | 1.30 |
| MSS5131-273ML_ | 27 | 0.161 | 19.0 | 0.48 | 0.56 | 0.62 | 0.85 | 1.20 |
| MSS5131-333ML_ | 33 | 0.200 | 18.0 | 0.44 | 0.52 | 0.58 | 0.80 | 1.10 |
| MSS5131-393ML_ | 39 | 0.215 | 17.0 | 0.42 | 0.50 | 0.55 | 0.74 | 1.00 |
| MSS5131-473ML_ | 47 | 0.270 | 16.0 | 0.38 | 0.46 | 0.51 | 0.71 | 0.95 |
| MSS5131-563ML_ | 56 | 0.280 | 15.0 | 0.34 | 0.42 | 0.47 | 0.70 | 0.90 |
| MSS5131-683ML_ | 68 | 0.368 | 12.5 | 0.31 | 0.38 | 0.42 | 0.66 | 0.85 |
| MSS5131-823ML_ | 82 | 0.420 | 12.0 | 0.27 | 0.32 | 0.35 | 0.62 | 0.80 |
| MSS5131-104ML_ | 100 | 0.580 | 11.5 | 0.26 | 0.30 | 0.33 | 0.55 | 0.69 |
| MSS5131-124ML_ | 120 | 0.610 | 11.0 | 0.23 | 0.27 | 0.30 | 0.51 | 0.62 |
| MSS5131-154ML_ | 150 | 0.820 | 10.0 | 0.21 | 0.26 | 0.28 | 0.47 | 0.58 |
| MSS5131-184ML_ | 180 | 1.00 | 9.0 | 0.19 | 0.23 | 0.25 | 0.43 | 0.54 |
| MSS5131-224ML_ | 220 | 1.10 | 8.0 | 0.18 | 0.21 | 0.23 | 0.39 | 0.50 |
| MSS5131-274ML_ | 270 | 1.43 | 7.5 | 0.15 | 0.18 | 0.20 | 0.35 | 0.45 |
| MSS5131-334ML_ | 330 | 1.58 | 6.8 | 0.13 | 0.17 | 0.19 | 0.32 | 0.42 |
| MSS5131-394ML_ | 390 | 1.80 | 5.4 | 0.12 | 0.15 | 0.16 | 0.30 | 0.38 |

1. Please specify **termination** and **packaging** codes:

MSS5131-394MLC

Termination: L = RoHS compliant matte tin over nickel over phos bronze (current production) or gold over nickel over phos bronze (prior production).

Special order:

T = RoHS tin-silver-copper (95.5/4/0.5) over gold over nickel over phos bronze or S = non-RoHS tin-lead (63/37) over gold over nickel over phos bronze.

Packaging: C = 7" machine-ready reel EIA-481 embossed plastic tape (600 per full reel).

B = Less than full reel In tape, but not machine-ready. To have a leader and trailer added (\$25 charge), use code letter C instead.

D = 13" machine-ready reel EIA-481 embossed plastic tape. Factory order only, not stocked (2500 per reel per full reel).

2. Inductance tested at 100 kHz, 0.1 Vrms, 0 Adc using an Agilent/HP 4263B LCR meter or equivalent.
 3. SRF measured using Agilent/HP 4191A or equivalent.
 4. DC current at which the inductance drops the specified amount from its value without current.
 5. Current that causes the specified temperature rise from 25°C ambient.
 6. Electrical specifications at 25°C.
- Refer to Doc 362 "Soldering Surface Mount Components" before soldering.

SPICE models
ON OUR WEB SITE



www.coilcraft.com

US +1-847-639-6400 sales@coilcraft.com

UK +44-1236-730595 sales@coilcraft-europe.com

Taiwan +886-2-2264 3646 sales@coilcraft.com.tw

China +86-21-6218 8074 sales@coilcraft.com.cn

Singapore + 65-6484 8412 sales@coilcraft.com.sg

Document 642-1 Revised 03/01/12

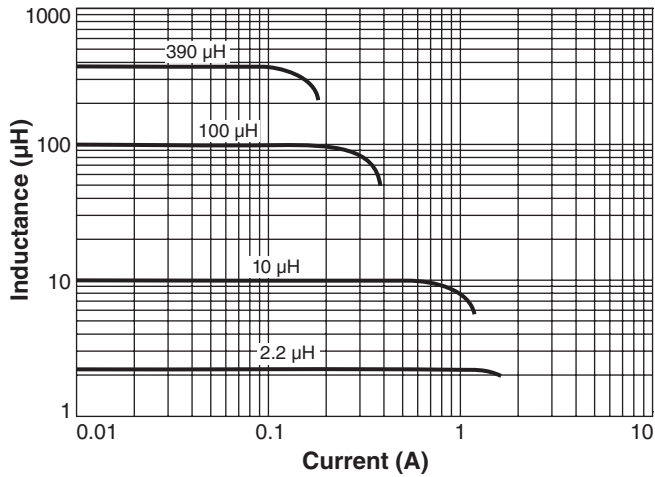
© Coilcraft Inc. 2013

This product may not be used in medical or high risk applications without prior Coilcraft approval. Specification subject to change without notice. Please check web site for latest information.

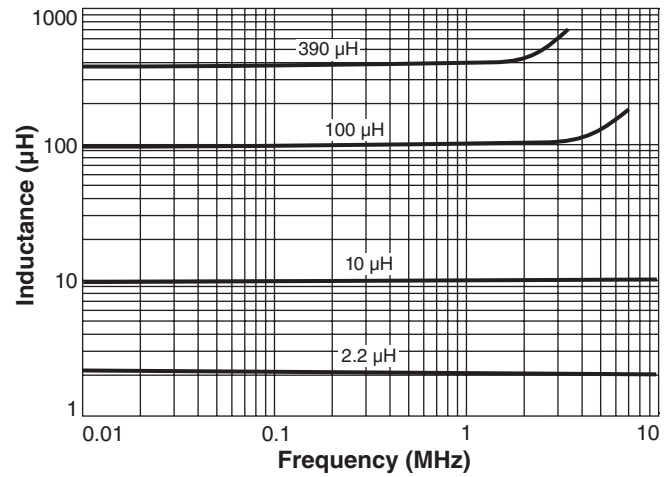


Shielded Power Inductors – MSS5131

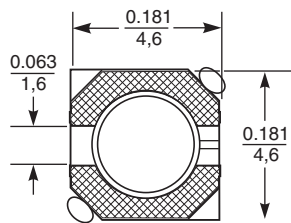
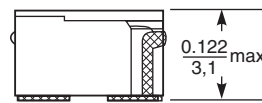
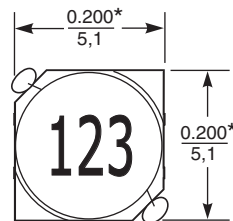
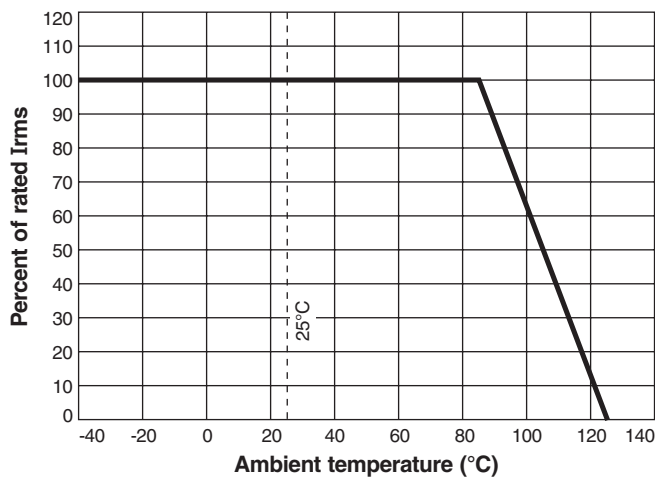
Typical L vs Current



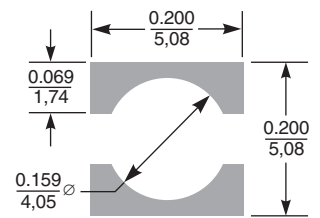
Typical L vs Frequency



Irms Derating



*Dimensions are of the case not including the termination. For maximum overall dimensions including the termination, add 0.035 in / 0,9 mm.



Recommended Land Pattern

Dimensions are in inches / mm



US +1-847-639-6400 sales@coilcraft.com
UK +44-1236-730595 sales@coilcraft-europe.com
Taiwan +886-2-2264 3646 sales@coilcraft.com.tw
China +86-21-6218 8074 sales@coilcraft.com.cn
Singapore +65-6484 8412 sales@coilcraft.com.sg

Document 642-2 Revised 03/01/12
 © Coilcraft Inc. 2013
 This product may not be used in medical or high risk applications without prior Coilcraft approval. Specification subject to change without notice. Please check web site for latest information.