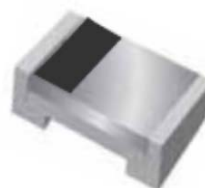


Small Signal Product

200mW High Speed SMD Switching Diode
FEATURES

- Designed for mounting on small surface
- Extremely thin/leadless package
- High mounting capability, strong surge with stand, high reliability
- Pb free version and RoHS compliant
- Halogen free


0603

MECHANICAL DATA

- Case : 0603 standard package, molded plastic
- Terminal : Gold plated, solderable per MIL-STD-750, method 2026 guaranteed
- High temperature soldering guaranteed : 260°C/10s
- Polarity : Indicated by cathode band
- Weight : 0.004 grams (approximately)

MAXIMUM RATINGS AND ELECTRICAL CHARACTERISTICS (T _A =25°C unless otherwise noted)			
PARAMETER	SYMBOL	VALUE	UNIT
Power Dissipation	P _D	200	mW
Repetitive Peak Reverse Voltage	V _{RRM}	75	V
Repetitive Peak Forward Current	I _{FRM}	200	mA
Mean Forward Current	I _O	100	mA
Non-Repetitive Peak Forward Surge Current	I _{FSM}	0.4	A
		0.8	
Thermal Resistance (Junction to Ambient)	R _{θJA}	375	°C/W
Junction and Storage Temperature Range	T _J , T _{STG}	-55 to +150	°C

PARAMETER	SYMBOL	MIN	MAX	UNIT
Reverse Breakdown Voltage	V _(BR)	-	75	V
Forward Voltage	V _F	-	1.00	V
		-	1.25	
Reverse Leakage Current	I _R	-	0.025	μA
		-	5.0	
Junction Capacitance	C _J	-	4	pF
Reverse Recovery Time	T _{rr}	-	4.0	ns

Small Signal Product

ORDERING INFORMATION				
PART NO.	PACKING CODE	PACKAGE	PACKING	MANUFACTURE CODE
TS4148C	RZG	0603	5000 / 7" Reel	(Note)
	RCG	0603	10000 / 13" Reel	

Note : Manufacture special control, if empty means no special control requirement.

EXAMPLE			
PREFERRED P/N	PART NO.	PACKING CODE	MANUFACTURE CODE
TS4148C RZG	TS4148C	RZG	
TS4148C RZG	TS4148C	RZG	C0

RATINGS AND CHARACTERISTICS CURVES

(TA=25°C unless otherwise noted)

Fig. 1 Typical Forward Characteristics

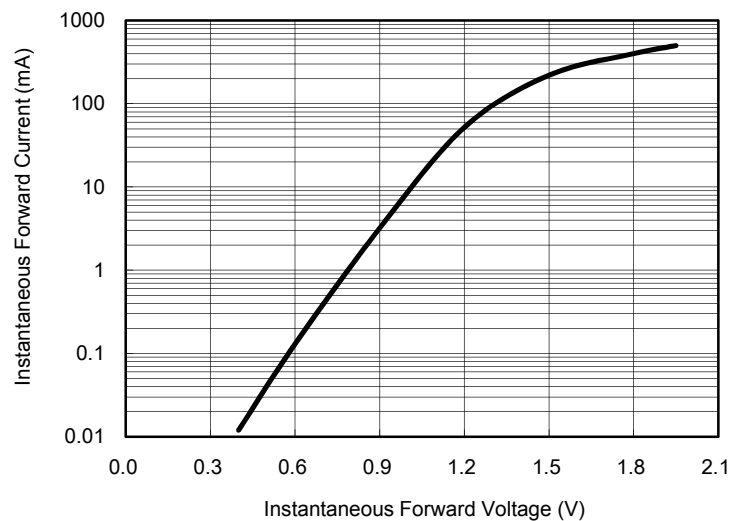


Fig. 2 Typical Reverse Characteristics

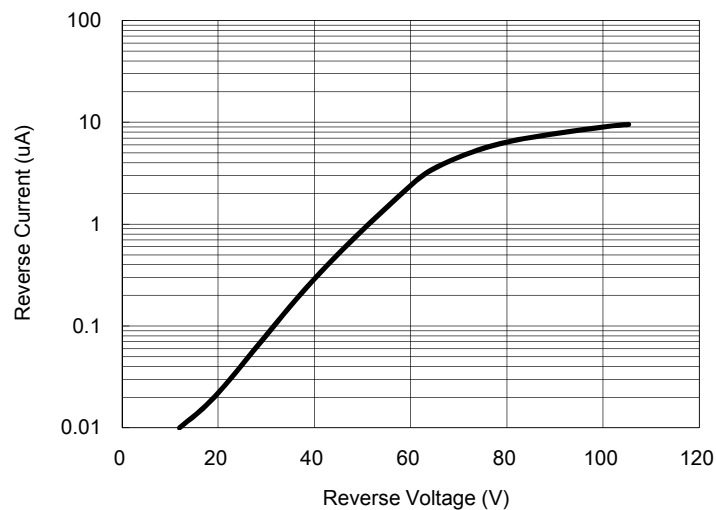


Fig. 3 Admissible Power Dissipation Curve

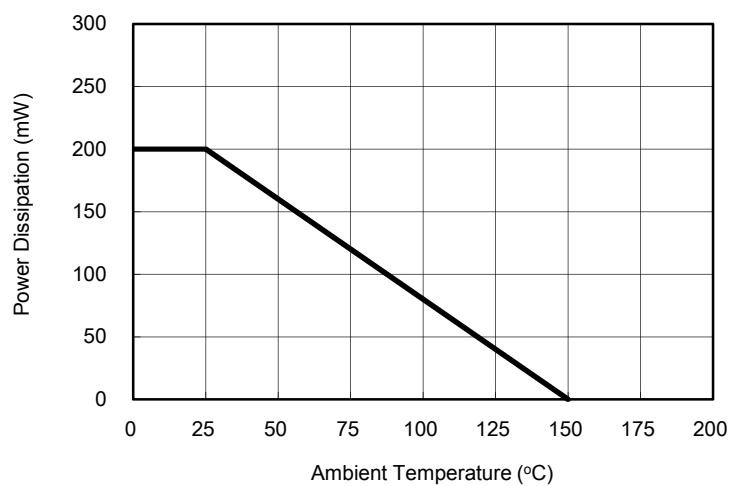
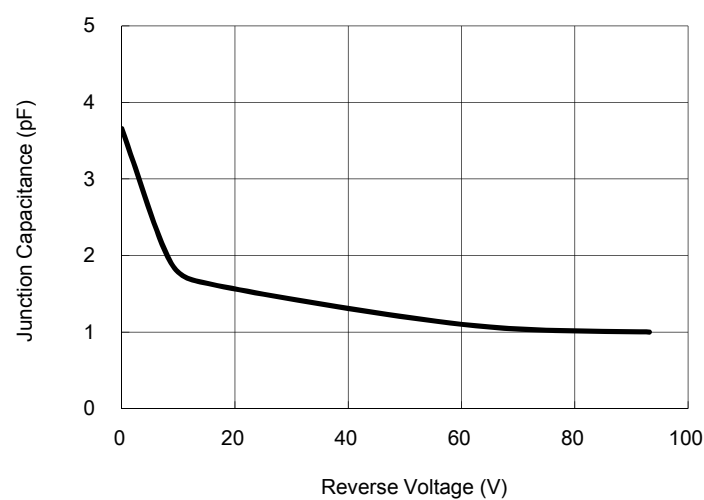
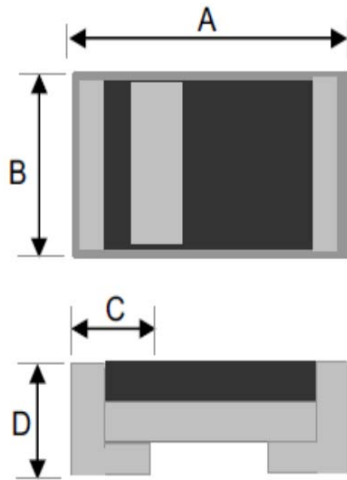


Fig. 4 Typical Junction Capacitance



Small Signal Product

DIMENSIONS



DIM.	Unit(mm)		Unit(inch)	
	Min	Max	Min	Max
A	1.45	1.65	0.057	0.065
B	0.70	0.90	0.028	0.035
C	0.25	0.45	0.010	0.018
D	0.55	0.75	0.022	0.030