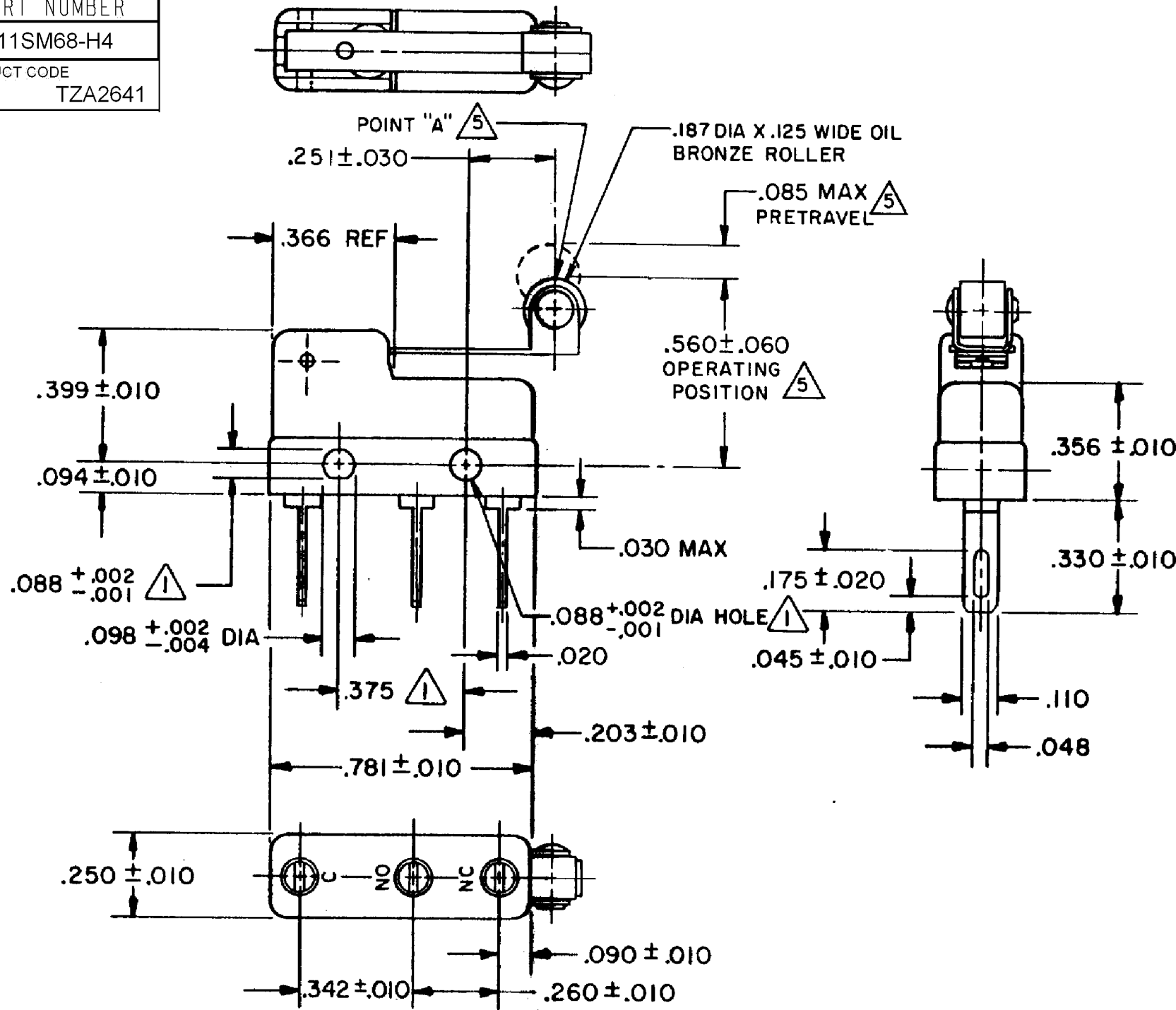


HONEYWELL
PART NUMBER
311SM68-H4
PRODUCT CODE
TZA2641

REV	DOCUMENT	CHANGED BY	CHECK
9	0038114	KVS 03JUN08	ASD



NOTES

- 1 MOUNTING HOLES WILL ACCEPT PINS OR SCREWS
- 2 - TERMINALS ARE PLATED FOR SOLDERING
- 3 - SWITCH WILL WITHSTAND TEMPERATURE OF 250°F
- 4 - MATING CONTACT SURFACES ARE 24K SOLID GOLD OVERLAY
- 5 - CHARACTERISTICS TAKEN AT POINT "A"

RELEASE NO. PR - 5504

REPLACES -

CHARACTERISTICS	5
OPERATING FORCE	40 GRAM MAX
RELEASE FORCE	7 GRAM MIN
DIFFERENTIAL TRAVEL	.019 MAX
OVERTRAVEL	.018 MIN

ELECTRICAL DATA		
CONTACT ARRANGEMENT SPDT		
30 VOLTS DC RATING		
	SEA LEVEL	50,000 FT
INDUCTIVE	1/2 AMP	1/2 AMP
RESISTIVE	1 AMP	1 AMP
MAXIMUM INRUSH 2 AMP		
APPROVALS	KEMA, CE	1A, 250V ~ T85 1E4
	UL, CSA	1A, 125 VAC

DESIGN UNITS: INCH
TOLERANCES UNLESS NOTED:
NO PLACE X ±
ONE PLACE .X ±
TWO PLACE .XX ±
THREE PLACE .XXX ±
FOUR PLACE .XXXX ±
ANGLES ±
THIRD ANGLE PROJECTION

DRAWN	VK	07 NOV 07
CHECK	RJ	07 NOV 07
THIS DRAWING COVERS A PROPRIETARY ITEM AND IS THE PROPERTY OF HONEYWELL. THIS DRAWING IS NOT TO BE COPIED OR USED WITHOUT THE PERMISSION OF HONEYWELL.		
INTERPRET PER ANSI Y14.5M-1982 OTHER HONEYWELL ENGINEERING STANDARDS MAY APPLY		

Honeywell			
TITLE SWITCH - BASIC			
SIZE	TYPE	DRAWING NAME	REV
B	I	311SM68-H4	9
SCALE	-	WEIGHT .006 LB MAX	SHEET 1 OF 1