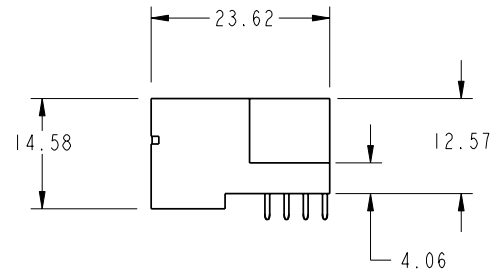
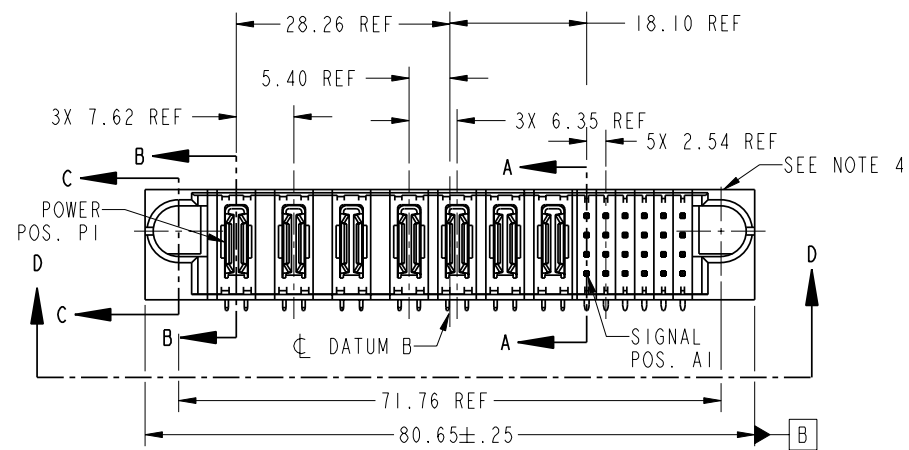
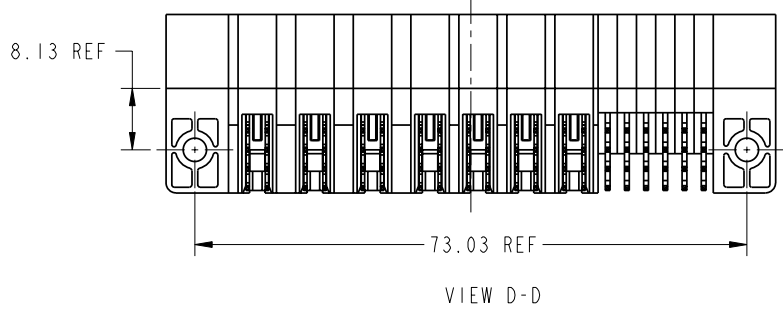


Tous droits strictement réservés. Reproduction ou communication a des tiers interdite sous quelque forme que ce soit sans autorisation écrite du propriétaire. Propriété de c FCI. Droits de reproduction FCI.



All rights strictly reserved. Reproduction or issue to third parties in any form whatever is not permitted without written authority from the proprietor. Property of FCI. Copyright FCI.

PRODUCT NO.	ROWS	POWER							SIGNAL							
		E1	P1	P2	P3	P4	P5	P6	P7	1	2	3	4	5	6	E2
51939-232-- NOTE ③	D C B A		PA	PA	PA	PA	PA	PA	PA	UH	UH	UH	UH	UH	UH	
			TT	TT	TT	TT	TT	TT	TT	GT	GT	GT	GT	GT	GT	
			RF	RF	RF	RF	RF	RF	RF	RF	RF	RF	RF	RF	RF	



CODE	DIM "M" MATING LENGTH	CONTACT TYPE
U	[6.86]	SIGNAL
T	[6.86]	SIGNAL
S	[6.86]	SIGNAL
R	[6.86]	SIGNAL
E	[5.59]	SIGNAL
F	[5.59]	SIGNAL
G	[5.59]	SIGNAL
H	[5.59]	SIGNAL
PA	[N/A]	POWER

mat'l code				SEE NOTE 2		tolerances unless otherwise specified		CUSTOMER	
ltr	ecn no.	dr	date	linear	0.X ± 0.3		COPY		
A	DG06-0178	Julia	05/08/06		0.XX ± 0.10		projection		
				angles	0.XXX ± 0.050		MM		
					0° ± 2°		scale		
				dr	Julia Wang	05/08/06	1:1		
				enr	SALLY LUO	05/08/06			
				chr	BEER FU	05/08/06			
				appd	JOSEPH HSIA	05/08/06			
sheet index	revision sheet	A	A	A	A	A			
		1	2	3	4				

www.fciconnect.com		title	
3ACP + 4P + 24S		RIGHT ANGLE SOLDER HEADER	
product family		PwrBlade	
code	213	size	dwg no
		A	51939-232
sheet	1 of 4		

1 | 2

Pro/E

PDM: Rev: A

STAT: Released

Printed: Dec 20, 2010

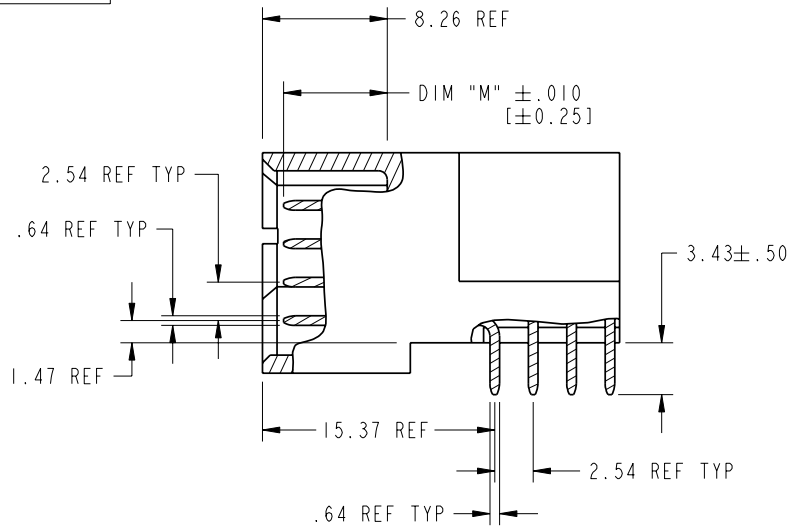
Tous droits strictement réservés. Reproduction ou communication a des tiers interdite sous quelque forme que ce soit sans autorisation écrite du propriétaire. Propriété de c FCI. Droits de reproduction FCI.



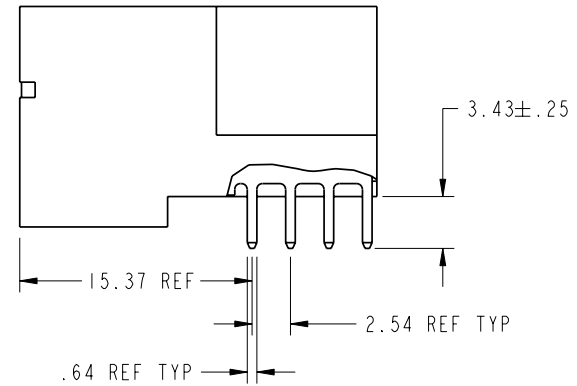
All rights strictly reserved. Reproduction or issue to third parties in any form whatever is not permitted without written authority from the proprietor. Property of FCI. Copyright FCI.

PRODUCT NUMBER

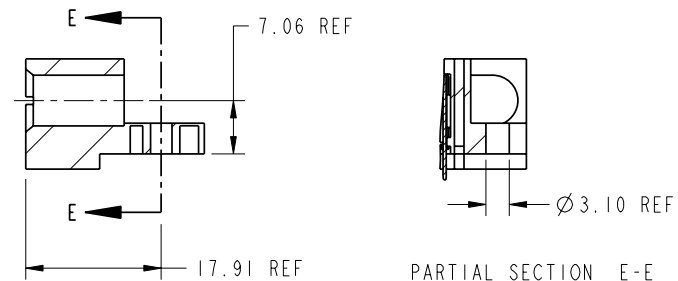
51939-232
NOTE ③



BROKEN-OUT SECTION A-A
SCALE 2:1



BROKEN-OUT SECTION B-B
SCALE 2:1



SECTION C-C

PARTIAL SECTION E-E

mat'l code		SEE NOTE 2		tolerances unless otherwise specified		CUSTOMER		 www.fciconnect.com	
lfr	ecn no.	dr	date	linear	0.X ±0.3	COPY		title	
A					0.XX ±0.10	projection		3ACP + 4P + 24S	
				angles	0.XXX ±0.050			RIGHT ANGLE SOLDER HEADER	
				dr	0° ±2°	MM		product family	
				enr	Julia Wang 05/08/06	scale		PwrBlade	
				chr	SALLY LUO 05/08/06	1:1		code	
				appd	BEER FU 05/08/06			size	
					JOSEPH HSIA 05/08/06			dwg no	
sheet index	revision sheet							A 51939-232	
								213	
								sheet 2 of 4	

A

A

B

B

1 | 2

3 |

4

1 | 2

Pro/E

PDM: Rev: A

STAT: Released

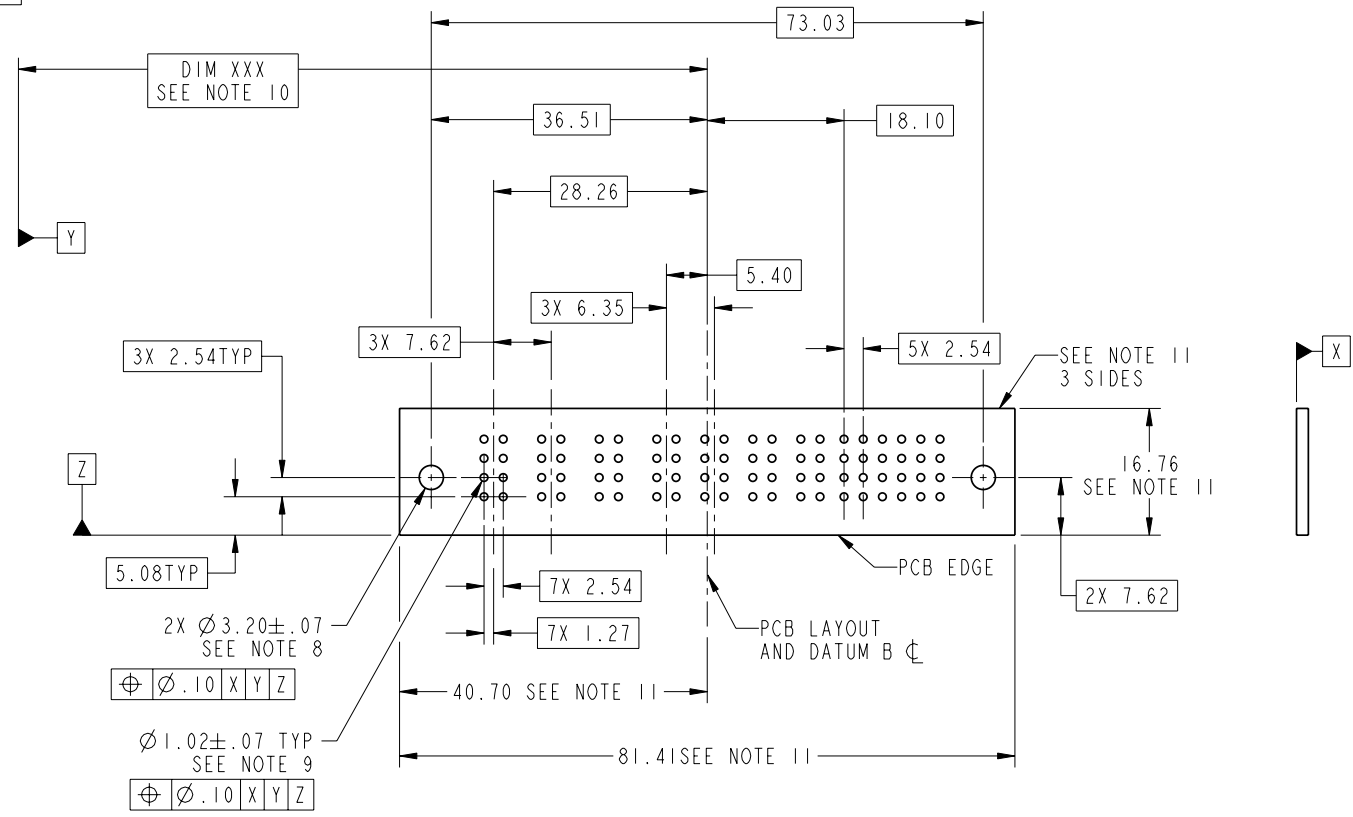
Printed: Dec 20, 2010

Tous droits strictement réservés. Reproduction ou communication a des tiers interdite sous quelque forme que ce soit sans autorisation écrite du propriétaire. Propriété de c FCI. Droits de reproduction FCI.



All rights strictly reserved. Reproduction or issue to third parties in any form whatever is not permitted without written authority from the proprietor. Property of FCI. Copyright FCI.

PRODUCT NUMBER
51939-232--
NOTE ③



RECOMMENDED PCB LAYOUT

mat'l code				SEE NOTE 2	tolerances unless otherwise specified	CUSTOMER	FCI www.fciconnect.com	
lfr	ecn no.	dr	date	linear	0.X ±0.3	COPY	title	
A				linear	0.XX ±0.10	projection	3ACP + 4P + 24S	
				linear	0.XXX ±0.050	⊕ ↗	RIGHT ANGLE SOLDER HEADER	
				angles	0° ±2°	MM	product family	code
				dr	Julia Wang 05/08/06	scale	PwrBlade	213
				enr	SALLY LUO 05/08/06	1:1	size	sheet
				chr	BEER FU 05/08/06		dwg no	3 of 4
				appd	JOSEPH HSIA 05/08/06		A	
sheet index	revision sheet						51939-232	

1 | 2

Pro/E

PDM: Rev: A

STAT: **Released**

Printed: Dec 20, 2010

A

A

B

B

1 | 2

3 |

4

code code 2256

4

Tous droits strictement réservés. Reproduction ou communication a des tiers interdite sous quelque forme que ce soit sans autorisation écrite du propriétaire. Propriété de c FCI. Droits de reproduction FCI.



All rights strictly reserved. Reproduction or issue to third parties in any form whatever is not permitted without written authority from the proprietor. Property of FCI. Copyright FCI.

1 | 2

3 |

4

PRODUCT NUMBER

51939-232__
NOTE ③

NOTES:

1. DIMENSIONS AND TOLERANCES ARE IN ACCORDANCE WITH ASME Y14.5M, 1994 UNLESS OTHERWISE SPECIFIED.


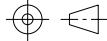

CONNECTOR NOTES:

- ② HOUSING MATERIAL: UL 94 V-0 GLASS FILLED HIGH-TEMP THERMOPLASTIC
POWER CONTACT MATERIAL: COPPER ALLOY
SIGNAL PIN MATERIAL: COPPER ALLOY
- ③ PLATING:
SEE PRINT I0064183 FOR PLATING SPEC OF 51939-232; 51939-232LF
- ④ MANUFACTURER'S NAME, P/N, AND DATE CODE TO APPEAR ON THIS SURFACE.
- 5. PRODUCT SPECIFICATION GS-12-149.
APPLICATION SPECIFICATION BUS-20-067.

6. PACKAGED IN TRAYS.

PCB NOTES:

- 7. ALL HOLE DIAMETERS ARE FINISHED HOLE SIZE.
- ⑧ MOUNTING HOLES, WHERE APPLICABLE, ARE UNPLATED.
- ⑨ $\varnothing 1.151 \pm 0.025$ DRILLED HOLES PLATED WITH
0.008 MIN SnPb OVER 0.03
TO 0.08 Cu PLATING TO ACHIEVE
 $\varnothing 1.02 \pm .07$ HOLE.
- ⑩ "DIM XXX" TO BE DETERMINED BY THE CUSTOMER.
- ⑪ CONNECTOR KEEP-OUT ZONE.

mat'l code		SEE NOTE 2		tolerances unless otherwise specified		CUSTOMER		 www.fciconnect.com	
lfr	ecn no.	dr	date	linear	0.X ±0.3		projection	COPY	
A					0.XX ±0.10			 MM	title
				angles	0.XXX ±0.050		 1:1		3ACP + 4P + 24S
				dr	0° ±2°			product family	
				enrg	Julia Wang	05/08/06	PwrBlade		code
				chr	SALLY LUO	05/08/06	size	dwg no	213
				appd	BEER FU	05/08/06	A	51939-232	sheet
					JOSEPH HSIA	05/08/06			4 of 4
sheet index	revision sheet								

1 | 2

Pro/E

PDM: Rev: A

STAT: **Released**

Printed: Dec 20, 2010