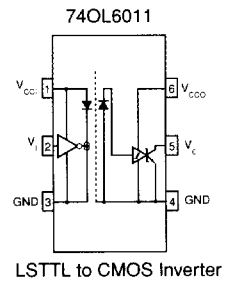
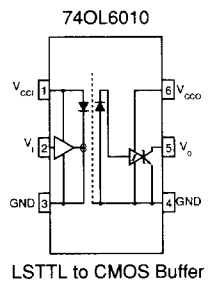
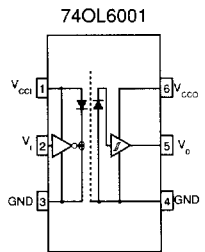
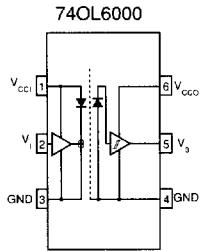


**10 Mbit/s High-Speed Logic-to-Logic (OPTOLOGIC®); AlGaAs Input**



Part Number	V <sub>IH</sub> (V) min	V <sub>IL</sub> (V) max	V <sub>OL</sub> (V) max	t <sub>PHL</sub> /t <sub>PLH</sub> (μs) max	I <sub>OL</sub> (mA) min	V <sub>ISO</sub> AC[RMS]	Pkg Outline		Agency Approvals			
							QT	MOT	Standard	VDE O884		
							QT	MOT	QT	MOT		
74OL6000	2	0.8	0.6	0.1/0.1	16	5.3kV	K	N/A	A,B,D,F,N,S,T,U	.300	N/A	
74OL6001	2	0.8	0.6	0.1/0.1	16	5.3kV	K	N/A	A,B,D,F,N,S,T,U	.300	N/A	
74OL6010	2	0.8	0.6	0.12/0.18	16	5.3kV	K	N/A	A,B,D,F,N,S,T,U	.300	N/A	
74OL6011	2	0.8	0.6	0.12/0.18	16	5.3kV	K	N/A	A,B,D,F,N,S,T,U	.300	N/A	

**Notes:**

Optocoupler Package drawings appear on pages 23, 24 and 25