

## Wireless System Performance

- Inside/Outside and Inside only
- Greater than 60 dB Isolation at 1KHz
- Low VSWR and Insertion loss
- Rugged Stainless Steel Construction

Midwest Microwave's Inside Only DC Blocks pass all frequencies from 250 Mhz to 8 GHz while exhibiting low insertion loss and low VSWR. The Inside/Outside DC Blocks pass all frequencies from 500 MHz to 8.0 GHz while also exhibiting low insertion loss and low VSWR. Both types pose a very high insertion loss to frequencies such as 60 Hz, 120 Hz, 400 Hz, and 1 KHz. They are designed for laboratory, production line, or system use and are available in all of the popular connector interfaces. They are manufactured using rugged stainless steel and are 100 % tested to assure dependable high quality performance.



## SMA Types

### SPECIFICATIONS

**Frequency:** 250 MHz - 8.0 GHz

**VSWR:** 1.35 max.

**Impedance:** 50 Ohms

**Insertion Loss:** 0.5 dB

**Isolation:** > 60 dB @ 1 KHz

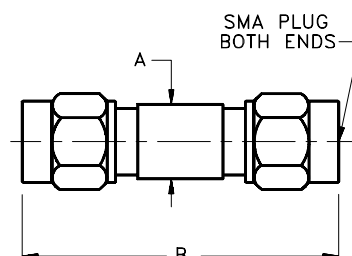
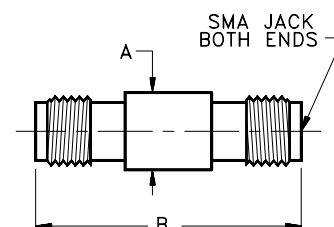
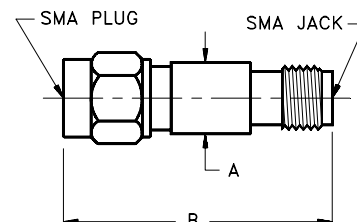
**D.C. Working Voltage:** 200 Volts min.

**Operating Temperature Range:** -20 to +100 °C

**Finish:** Passivated Stainless Steel

### INSIDE ONLY

250 MHz - 8.0 GHz	Inside Only 3518 Series	Model Numbers
Male/Female	Female/Female	Male/Male
<b>DCB-3518-MF-SMA-02</b>	<b>DCB-3518-FF-SMA-02</b>	<b>DCB-3518-MM-SMA-02</b>
A = 0.280 (7.1) Dia. B = 0.880 (22.4) Long	A = 0.280 (7.1) Dia. B = 0.780 (19.8) Long	A = 0.280 (7.1) Dia. B = 0.980 (24.9) Long



### INSIDE / OUTSIDE

500 MHz - 8.0 GHz	Inside / Outside 3519 Series	Model Numbers
Male/Female	Female/Female	Male/Male
<b>DCB-3519-MF-SMA-02</b>	<b>DCB-3519-FF-SMA-02</b>	<b>DCB-3519-MM-SMA-02</b>
A = 0.480 (12.2) Dia. B = 1.100 (27.9) Long	A = 0.480 (12.2) Dia. B = 1.020 (25.9) Long	A = 0.480 (12.2) Dia. B = 1.200 (30.5) Long