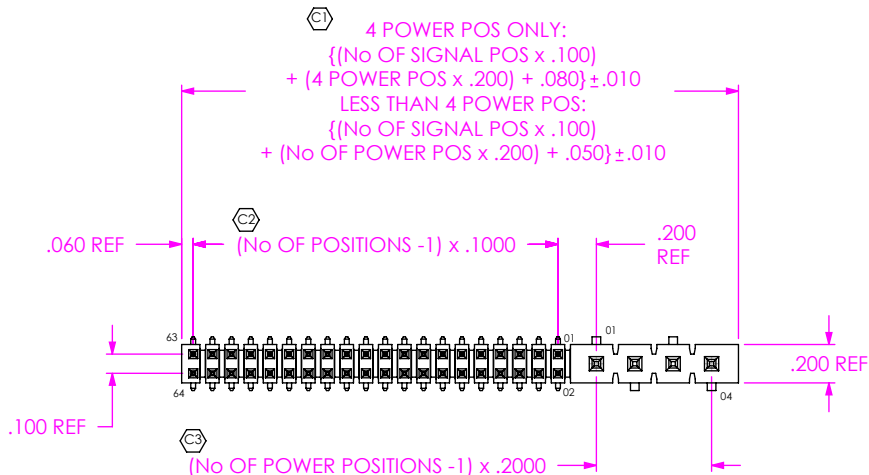


DO NOT SCALE FROM THIS PRINT

HPMC-1XX-XX-XX-X-XX



NO OF POSITIONS
 -02 THRU -24
 (PER ROW)

POWER POSITIONS
 -02 THRU -04
 (USE T-1S8-04-XX)

LEAD STYLE
 -01, -03, *-05: THROUGH HOLE
 -02, -04, *-06: SURFACE MOUNT
 (T-1S6-XX-XX-2 & T-1S8-04-XX)
 [SEE TABLE 1]

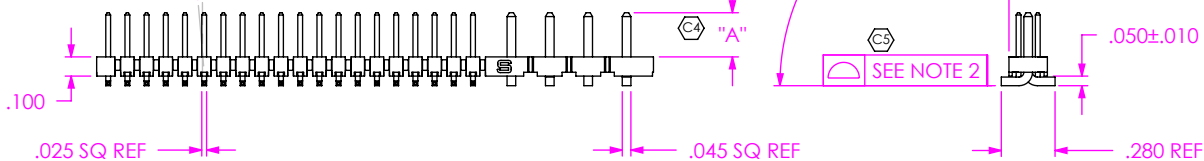
ROW SPECIFICATION
 -D: DOUBLE (USE HPMC-XX-D-X)

PLATING SPECIFICATION

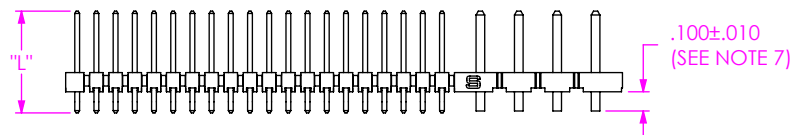
-T: TIN (USE T-1S6-XX-T-2 & T-1S8-04-T)
 -L: LIGHT SELECTIVE GOLD
 (USE T-1S6-XX-L-2 & T-1S8-04-T)
 -TM: MATTE TIN (USE T-1S6-XX-T-2 & T-1S8-04-T)
 -LM: LIGHT SELECTIVE GOLD, MATTE TIN TAIL
 (USE T-1S6-XX-L-2 & T-1S8-04-T)

* = NOT TOOLED

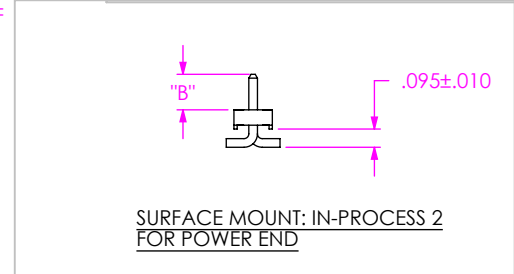
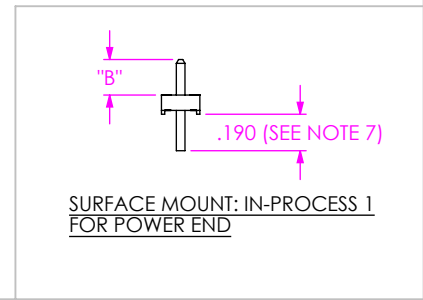
2° MAX SWAY
 (ANY DIRECTION)



SURFACE MOUNT: STYLES -02, -04, -06



THROUGH HOLE: STYLES -01, -03, -05
 [DIFFERENT AS SHOWN, OTHERWISE SAME AS SURFACE MOUNT]



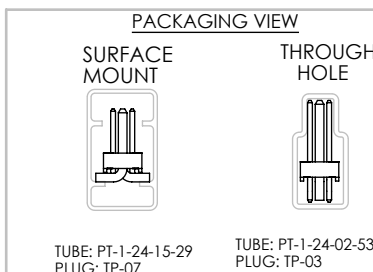
NOTES:

1. Ⓢ REPRESENTS A CRITICAL DIMENSION.
2. COPLANARITY (SEE TABLE 2)
3. BURR ALLOWANCE: .0015 MAX.
4. MAXIMUM CUT FLASH: .020.
5. MINIMUM PUSHOUT FORCE: 1.0 LB.
6. MAXIMUM ALLOWABLE BOW: .002 INCH/INCH AFTER ASSEMBLY.
7. POWER END TAILS SHEARED TO ACHIEVE DIMENSION SHOWN.
8. TIN PLATED PINS MUST BE FILLED IN THE SAME WAY AS THE SELECTIVE PLATED PINS TO REDUCE THE NUMBER OF BAND MARKS IN THE POST AREA.

No OF POS	COPLANARITY
-02 THRU -20 (SIGNAL)	.0060
-21 THRU -24 (SIGNAL)	.0080

LEAD STYLE	"A"	"B"	TERMINAL	"L"
-01	.230	---	T-1S6-16-XX-2	.445
-02	.230	.185	T-1S6-16-XX-2	---
-03	.320	---	T-1S6-08-XX-2	.530
-04	.320	.275	T-1S6-08-XX-2	---
*-05	.485	---	T-1S6-23-XX-2	.695
*-06	.420	.375	T-1S6-15-XX-2	---

* = FOR BOTTOM MOUNT & PASS THROUGH



UNLESS OTHERWISE SPECIFIED, DIMENSIONS ARE IN INCHES.
 TOLERANCES ARE:
 DECIMALS ANGLES
 .XX: ±.01 2°
 .XXX: ±.005
 .XXXX: ±.0020

PROPRIETARY NOTE

THIS DOCUMENT CONTAINS INFORMATION CONFIDENTIAL AND PROPRIETARY TO SAMTEC, INC. AND SHALL NOT BE REPRODUCED OR TRANSFERRED TO OTHER DOCUMENTS OR DISCLOSED TO OTHERS OR USED FOR ANY PURPOSE OTHER THAN THAT WHICH IT WAS OBTAINED WITHOUT THE EXPRESSED WRITTEN CONSENT OF SAMTEC, INC.

MATERIAL: DO NOT SCALE DRAWING SHEET SCALE: 1:1
 INSULATOR: VECTRA E130I
 COLOR: BLACK
 SIGNAL TERMINAL: PHOS BRONZE
 POWER TERMINAL: CDA 7025

SAMTEC

520 PARK EAST BLVD, NEW ALBANY, IN 47150
 * PHONE 812.944.6733 FAX 812.948.5047
 e-Mail: INFO@SAMTEC.COM CODE: 55322

DESCRIPTION: HI POWER MALE COMBO
DWG. NO. HPMC-1XX-XX-XX-X-XX
BY: DEAN P 2/15/1999 **SHEET 1 OF 1**