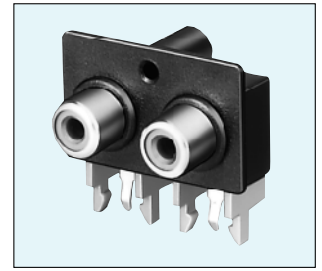
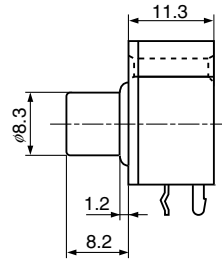
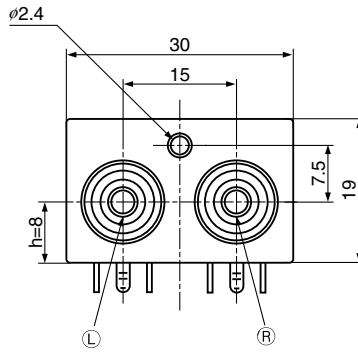


## JPJ1042 Series

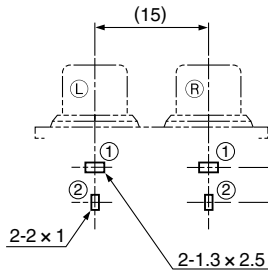
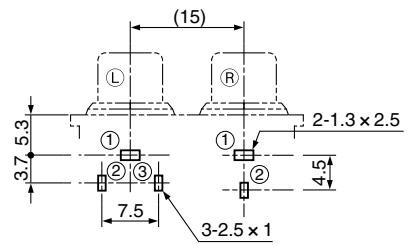
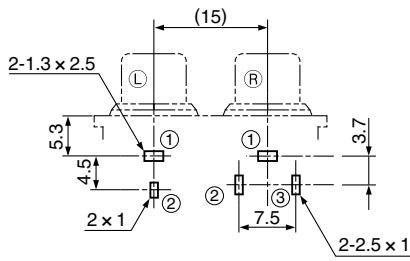
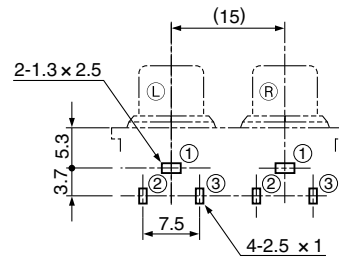
h = 8 mm


**JPJ1042**


h = 12.5 mm

Available h = 12.5 mm Type.

### Hole Layout (Bottom View)


**Fig. 1**

**Fig. 2**

**Fig. 3**

**Fig. 4**

Schematic	Model No.	Hole Layout (Bottom view)
	JPJ2042-01- L R 0	Fig. 1
	JPJ1142-01- L R 0	Fig. 2
	JPJ0800-01- L R 0	Fig. 3
	JPJ1042-01- L R 0	Fig. 4

L &amp; R indicate pin jack color No. below.

Color No.	
1	Black
2	Red
3	White
4	Yellow
5	Blue