

SPECIFICATIONS

RCA Connector

Mechanical

Mating Force: 0.5~3.0Kg(1.10~6.61Lb) (single port)
Unmating Force: 0.5~3.0Kg(1.10~6.61Lb) (single port)
Durability: 100Cycles

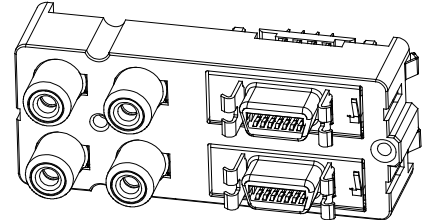
Electrical

Current Rating: 1A
Contact Resistance: 30mΩ max.(initial) 80mΩ max.(after test)
Dielectric Withstanding Voltage: 500V AC/1min min.
Insulation Resistance: 100MΩ min.

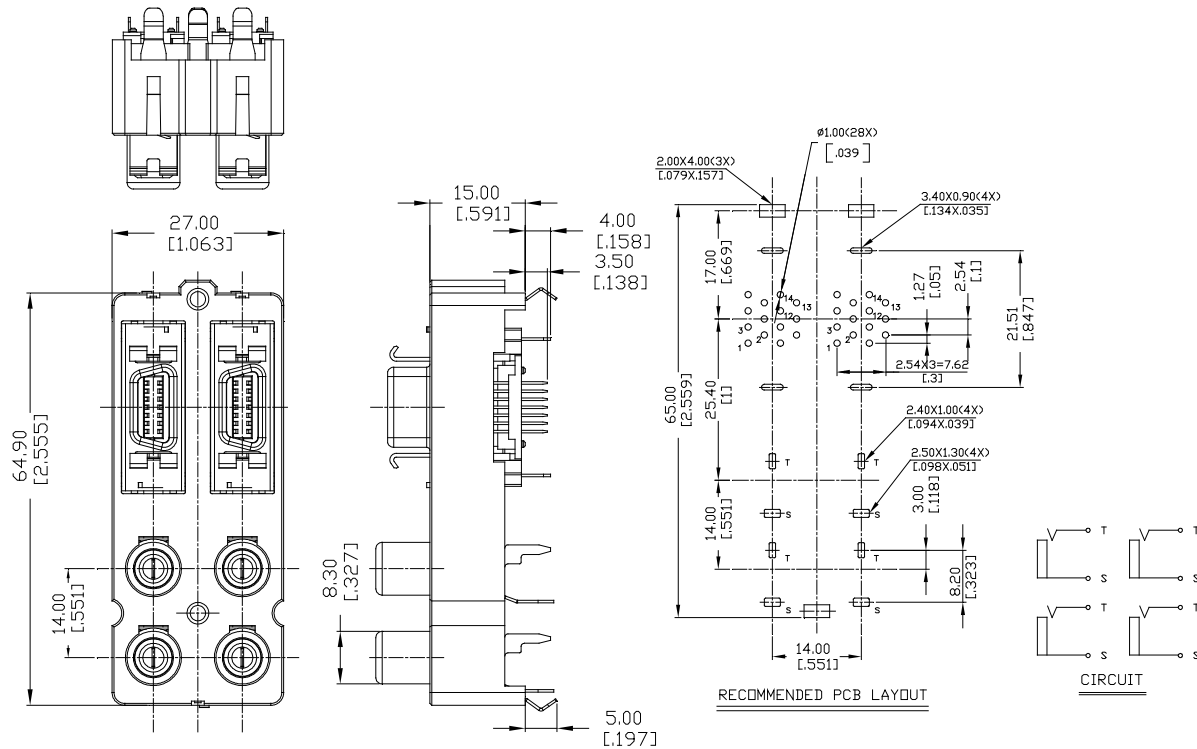
Physical

Housing: Thermoplastic, UL 94V-0 rated
Contact and Shell: Copper alloy&Iron alloy
Plating: See "ORDERING INFORMATION"
Operating Temperature: -25°C to +70°C

RCA JACK Series
Vertical, T/H
RCA&QB Structure



DRAWING



ORDERING INFORMATION

