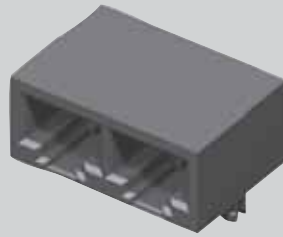
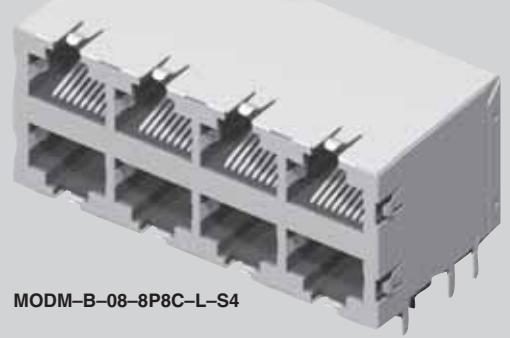




MODM-A-02-8P8C-G



MODM-B-08-8P8C-L-S4



MODM-A, MODM-B SERIES

GANGED IN-LINE/STACKED MODULAR JACKS

SPECIFICATIONS

For complete specifications and recommended PCB layouts see www.samtec.com?MODM-A

Insulator Material: PBT Glass Filled
Contact Material: Phosphor Bronze
Shield Material: Copper Alloy
Plating: Gold on Contacts, Nickel on Shield, Gold on Tails
Operating Temp Range: -25°C to +90°C
Current Rating: 2 A per Contact
Voltage Rating: 120 VAC
Contact Resistance: 20 mΩ max
Minimum Cycles: 500
System Applications: CAT3
Packaging: Packaged and shipped in Bulk Packaging Trays; Trays suitable for automation are available upon request.
RoHS Compliant: Yes
Lead-Free Solderable: Yes (Wave Solder only)



MODM - A	NO. OF PORTS	POSITIONS CONTACTS	PLATING	SHIELD OPTION																								
-02 thru -06, -08, -10	-8P8C = 8 Positions 8 Contacts per port	-G = 15μ" (0,38μm) Gold on Mating Area, Gold Flash on Tails -E = 50μ" (1,27μm) Gold on Mating Area, Gold Flash on Tails	-S = Shielded (No Panel Grounds) (-03 and -10 Not Available) -S4 = Shielded with Top, Bottom and Side Panel Grounds (Requires -02, -04 or -08 ports)																									
		APPLICATION SPECIFIC OPTION Other plating options available. Call Samtec.		<table border="1"> <thead> <tr> <th>NO. OF PORTS</th> <th>A Unshielded</th> <th>A Shielded</th> </tr> </thead> <tbody> <tr><td>-02</td><td>(30,46) 1.199</td><td>(31,00) 1.220</td></tr> <tr><td>-03</td><td>(44,43) 1.749</td><td>N/A</td></tr> <tr><td>-04</td><td>(58,40) 2.299</td><td>(58,94) 2.320</td></tr> <tr><td>-05</td><td>(72,37) 2.849</td><td>(72,91) 2.870</td></tr> <tr><td>-06</td><td>(86,34) 3.399</td><td>(86,88) 3.420</td></tr> <tr><td>-08</td><td>(114,28) 4.499</td><td>(114,90) 4.524</td></tr> <tr><td>-10</td><td>(128,28) 5.050</td><td>N/A</td></tr> </tbody> </table>	NO. OF PORTS	A Unshielded	A Shielded	-02	(30,46) 1.199	(31,00) 1.220	-03	(44,43) 1.749	N/A	-04	(58,40) 2.299	(58,94) 2.320	-05	(72,37) 2.849	(72,91) 2.870	-06	(86,34) 3.399	(86,88) 3.420	-08	(114,28) 4.499	(114,90) 4.524	-10	(128,28) 5.050	N/A
NO. OF PORTS	A Unshielded	A Shielded																										
-02	(30,46) 1.199	(31,00) 1.220																										
-03	(44,43) 1.749	N/A																										
-04	(58,40) 2.299	(58,94) 2.320																										
-05	(72,37) 2.849	(72,91) 2.870																										
-06	(86,34) 3.399	(86,88) 3.420																										
-08	(114,28) 4.499	(114,90) 4.524																										
-10	(128,28) 5.050	N/A																										

SPECIFICATIONS

For complete specifications and recommended PCB layouts see www.samtec.com?MODM-B

Insulator Material: PBT Glass Filled
Contact Material: Phosphor Bronze
Shield Material: Copper Alloy
Plating: Gold on Contacts, Nickel on Shield, Gold on Tails
Operating Temp Range: -25°C to +90°C
Current Rating: 1.5 A per contact
Voltage Rating: 120 VAC max
Contact Resistance: 20 mΩ max
Minimum Cycles: 500
System Applications: CAT3
Packaging: Packaged and shipped in Bulk Packaging Trays; Trays suitable for automation are available upon request.
RoHS Compliant: Yes
Lead-Free Solderable: Yes (Wave Solder only)



MODM - B	NO. OF PORTS	POSITIONS CONTACTS	PLATING	OPTIONS																					
-02, -04, -06, -08, -12, -16	-8P8C = 8 Positions 8 Contacts per port	-L = 15μ" (0,38 μm) Gold on Mating Area, Gold Flash on Tails -U = 50μ" (1,27μm) Gold on Mating Area, Gold Flash on Tails	-S4 = Shielded with Top, Bottom and Side Panel Grounds (-02 port does not have panel grounds)																						
		APPLICATION SPECIFIC OPTION Other plating options available. Call Samtec.		<table border="1"> <thead> <tr> <th>NO. OF PORTS</th> <th>A Unshielded</th> <th>A Shielded</th> </tr> </thead> <tbody> <tr><td>-02</td><td>(16,50) .650</td><td>(17,25) 0.679</td></tr> <tr><td>-04</td><td>(30,50) 1.200</td><td>(31,25) 1.230</td></tr> <tr><td>-06</td><td>(44,50) 1.752</td><td>(45,25) 1.781</td></tr> <tr><td>-08</td><td>(58,50) 2.303</td><td>(59,25) 2.333</td></tr> <tr><td>-12</td><td>(86,50) 3.406</td><td>(87,25) 3.435</td></tr> <tr><td>-16</td><td>(114,50) 4.508</td><td>(115,25) 4.537</td></tr> </tbody> </table>	NO. OF PORTS	A Unshielded	A Shielded	-02	(16,50) .650	(17,25) 0.679	-04	(30,50) 1.200	(31,25) 1.230	-06	(44,50) 1.752	(45,25) 1.781	-08	(58,50) 2.303	(59,25) 2.333	-12	(86,50) 3.406	(87,25) 3.435	-16	(114,50) 4.508	(115,25) 4.537
NO. OF PORTS	A Unshielded	A Shielded																							
-02	(16,50) .650	(17,25) 0.679																							
-04	(30,50) 1.200	(31,25) 1.230																							
-06	(44,50) 1.752	(45,25) 1.781																							
-08	(58,50) 2.303	(59,25) 2.333																							
-12	(86,50) 3.406	(87,25) 3.435																							
-16	(114,50) 4.508	(115,25) 4.537																							

Due to technical progress, all designs, specifications and components are subject to change without notice.