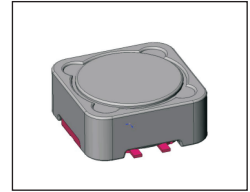


SMT Power Inductor

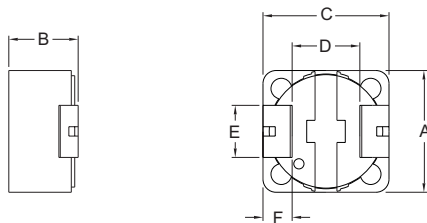
SIQ1040 Type

Features

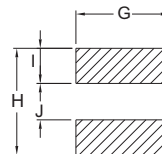
- RoHS compliant.
- Low profile (4.0mm max. height), high current(11A, 1.5uH) SMD type.
- Magnetically shielded, suitable for high density mounting.
- High energy storage and low DCR.
- Provided with embossed carrier tape packing.
- Ideal for power source circuits, DC-DC converter, DC-AC inverters inductor applications.
- In addition to the standard versions shown here, customized inductors are available to meet your exact requirements.



Mechanical Dimension:



RECOMMENDED PAD PATTERNS



UNIT : mm/inch
 A = 10.3 / 0.406 MAX.
 B = 4.0 / 0.157 MAX.
 C = 10.3 / 0.406 MAX.
 D = 6.4 ± 0.3 / 0.252 ± 0.012
 E = 4.6 ± 0.2 / 0.181 ± 0.008
 F = 1.7 ± 0.2 / 0.067 ± 0.008
 G = 5.4 / 0.213
 H = 10.8 / 0.425
 I = 2.9 / 0.114
 J = 5.0 / 0.197

Electrical Characteristics: 25°C: 100KHz, 0.1V

PART NO.	L ¹ (uH)	DCR (mΩ) TYP.	Isat ² (Adc)	I _{rms} ³ (Adc)
SIQ1040 - 1R5	1.5	12	11.00	11.00
SIQ1040 - 2R5	2.5	19	8.50	8.50
SIQ1040 - 3R3	3.3	27	7.00	7.00
SIQ1040 - 4R7	4.7	29	7.60	7.00
SIQ1040 - 5R2	5.2	33	6.50	6.50
SIQ1040 - 6R2	6.2	38	5.60	5.60
SIQ1040 - 7R3	7.3	45	4.80	4.80
SIQ1040 - 100	10.0	57	4.40	4.40
SIQ1040 - 150	15.0	87	3.60	3.60
SIQ1040 - 220	22.0	122	3.20	3.20
SIQ1040 - 330	33.0	186	2.50	2.50
SIQ1040 - 470	47.0	275	2.10	2.10
SIQ1040 - 680	68.0	367	1.80	1.80
SIQ1040 - 101	100.0	537	1.45	1.45
SIQ1040 - 151	150.0	845	1.25	1.25
SIQ1040 - 221	200.0	1220	0.90	0.90
SIQ1040 - 331	330.0	1770	0.80	0.80

1. Tolerance of inductance: ±30%.
2. Isat is the DC current which cause the inductance drop less than 35% of its nominal inductance without current.
3. Ir is the DC current which cause the surface temperature of the part increase less than 45°C.
4. Operating temperature: -20°C to 105°C (including self-temperature rise).



DELTA ELECTRONICS, INC.

(TAOYUAN PLANT CPBG) 252, SAN YING ROAD, KUEISAN INDUSTRIAL ZONE, TAOYUAN SHIEN, 333, TAIWAN, R.O.C.

TEL: 886-3-3591968; FAX: 886-3-3591991

<http://www.deltawww.com>