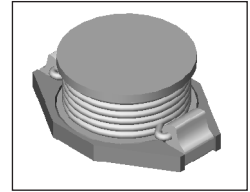


SMT Power Inductor

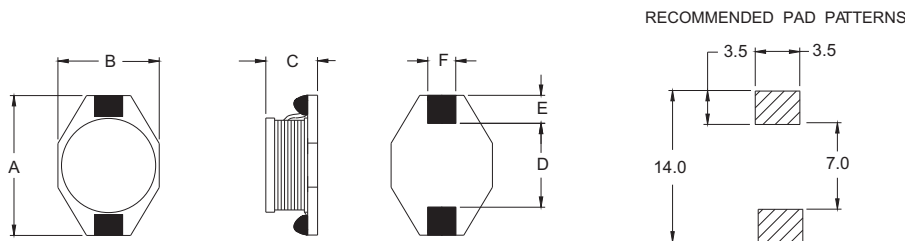
SISH811 Type

Features

- RoHS compliant.
- High current (3.5A, 10uH), SMD type.
- Unshielded.
- Self-leads, suitable for high density mounting.
- High energy storage and low DCR.
- Provided with embossed carrier tape packing.
- Ideal for power source circuits, DC-DC converter, DC-AC inverters inductor applications.
- In addition to the standard versions shown here, customized inductors are available to meet your exact requirements.



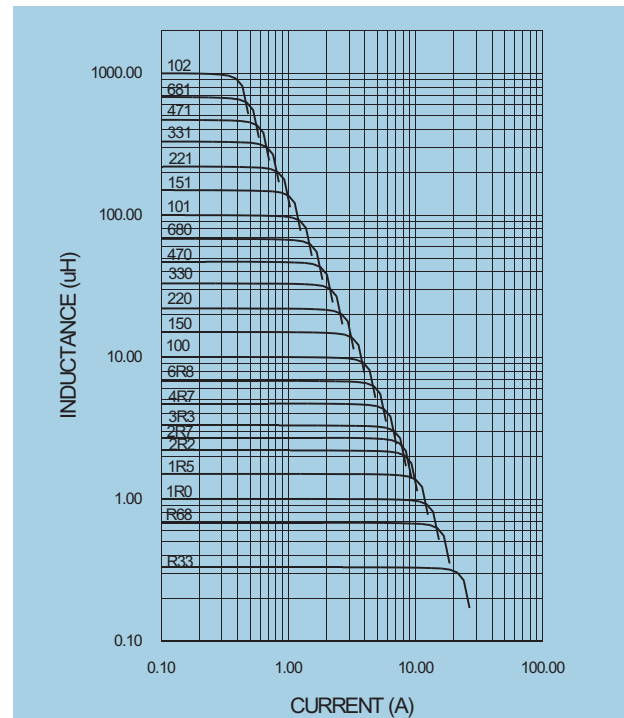
Mechanical Dimension:



UNIT:mm/inch
 A = 12.94 / 0.510Max.
 B = 9.4 / 0.370 Max.
 C = 11.4 / 0.449Max.
 D = 7.7±0.2 / 0.311±0.008
 E = 2.5±0.2 / 0.098±0.008
 F = 2.5±0.2 / 0.098±0.008

Electrical Characteristics: 25°C: 100KHz, 0.1V

PART NO.	L ¹ (uH)	DCR (Ω)MAX	Isat ² (A dc)	I _r ³ (A dc)
SISH811 - 2R2	2.2	0.006	17.0	9.0
SISH811 - 3R3	3.3	0.010	14.0	7.0
SISH811 - 4R7	4.7	0.013	11.0	6.0
SISH811 - 100	10.0	0.040	8.0	3.5
SISH811 - 150	15.0	0.050	7.0	3.0
SISH811 - 220	22.0	0.066	5.5	2.5
SISH811 - 330	33.0	0.080	4.0	2.0
SISH811 - 470	47.0	0.110	3.8	1.6
SISH811 - 680	68.0	0.170	3.0	1.2
SISH811 - 101	100.0	0.220	2.5	1.2
SISH811 - 151	150.0	0.340	2.0	0.9
SISH811 - 221	220.0	0.440	1.6	0.7
SISH811 - 331	330.0	0.700	1.2	0.6
SISH811 - 471	470.0	0.950	1.0	0.3
SISH811 - 681	680.0	1.200	1.0	0.2
SISH811 - 102	1000.0	2.000	0.8	0.1



1. Tolerance of inductance: ±20%.
2. Isat is the DC current which cause the inductance drop less than 10% of its nominal inductance without current.
3. Ir is the DC current which cause the surface temperature of the part increase less than 45°C.
4. Operating temperature : -20°C to 105°C (including self-temperature rise)



DELTA ELECTRONICS, INC.

(TAOYUAN PLANT CPBG) 252, SAN YING ROAD, KUEISAN INDUSTRIAL ZONE, TAOYUAN SHIEN, 333, TAIWAN, R.O.C.

TEL: 886-3-3591968; FAX: 886-3-3591991

<http://www.deltawww.com>