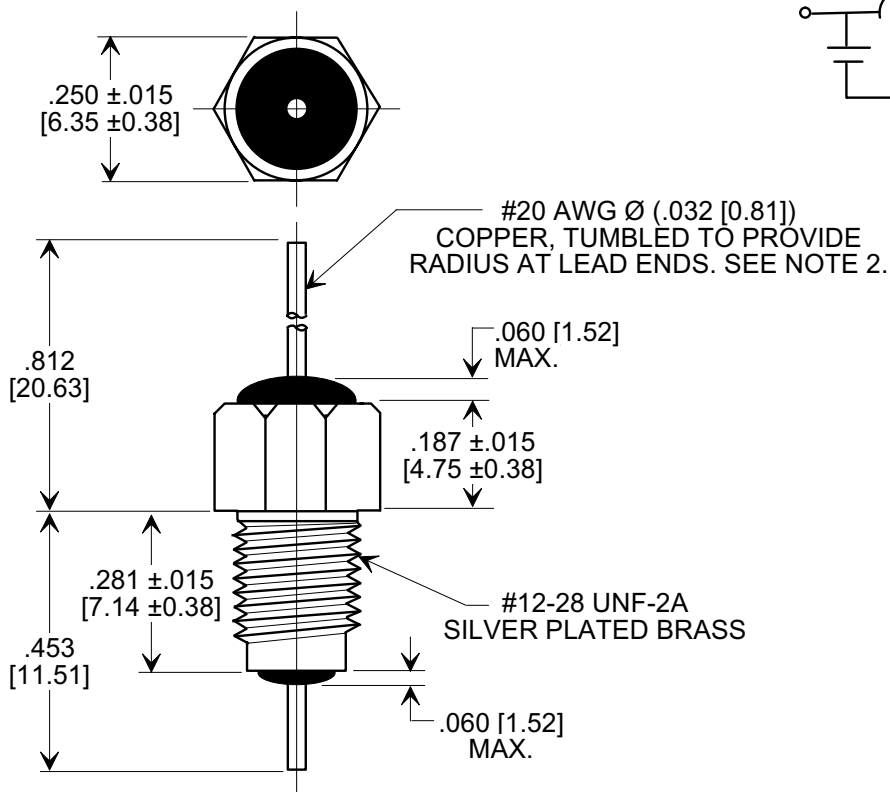
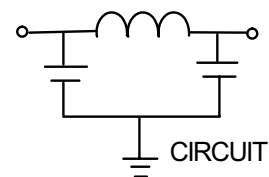
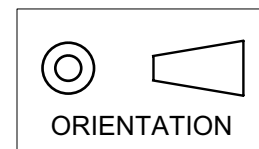


This drawing is the property of Tusonix, Inc., and may not be used, reproduced, published or disclosed to others without expressed authorization by Tusonix Inc.

**Electrical Testing
per Tusonix standard
test plans and Mil-Std-202
Test Methods.**

MARKETING SALES DRAWING
DIMENSIONS IN INCHES - DO NOT SCALE THIS DRAWING
DIMENSIONS IN METRIC - []



NOTES:

1. TUSONIX STANDARD PART NUMBER: 4204-008.
TUSONIX RoHS COMPLIANT PART NUMBER: 4204-008 LF.
CUSTOMER MUST SPECIFY STANDARD OR RoHS PART NUMBER WHEN ORDERING.
2. LEAD FINISH: STANDARD PART #: 60/40 SOLDER PLATED COPPER. RoHS PART #:
SILVER PLATED COPPER.
3. PART MARKING: TRADEMARK AND VARIATION NUMBER ON HEX FLATS.
STANDARD PART: BLACK INK. RoHS PART: GREEN INK.
4. SUPPLIED WITHOUT HEX NUT AND INTERNAL TOOTH LOCK WASHER.

CAP. (pF)	WORKING VOLTAGE (WVdc)		CURRENT IDC	I.R. MIN. @ 100 (VDC)	DWV (VDC)	MINIMUM NO LOAD INSERTION LOSS (dB) AT 25°C PER MIL-STD -220			
	85°C	125 °C				10 MHz	100 MHz	1 GHz	10 GHz
1500/ 3000	350	200	10	10 G Ω	850	5	45	70	70

X-2015 Rev-0	REVISION RECORD		Original Release C.O. 19990322-3-01 ADDED NOTES 1-4, IR, DWV & METRIC. S.M. 02-06-06 20060109-2-05	1	TOLERANCES unless otherwise specified		Title		
	0				2 PLC. DECIMAL ± N/A		BUSHING STYLE EMI FILTER		
	C.O. 19990322-3-01				3 PLC. DECIMAL ± .031 [0.79]				
	ADDED NOTES 1-4, IR, DWV & METRIC. S.M. 02-06-06				ANGLES ± N/A		Drawn S.M. 03-22-99		Scale 3 X
	20060109-2-05				TUSONIX TUCSON, ARIZONA		Approved H.R. 03-22-99		
							A	4204-008	