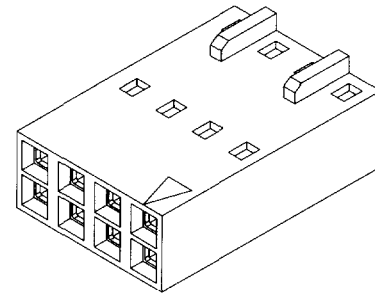


**molex** 2.54mm (.100") Pitch  
SL™  
Crimp Housing

Dense  
Packaging

A

70450  
Dual Row  
Version C, Back Ribs



Not For Use With C-Grid III™ Components

**FEATURES AND SPECIFICATIONS**

**Features and Benefits**

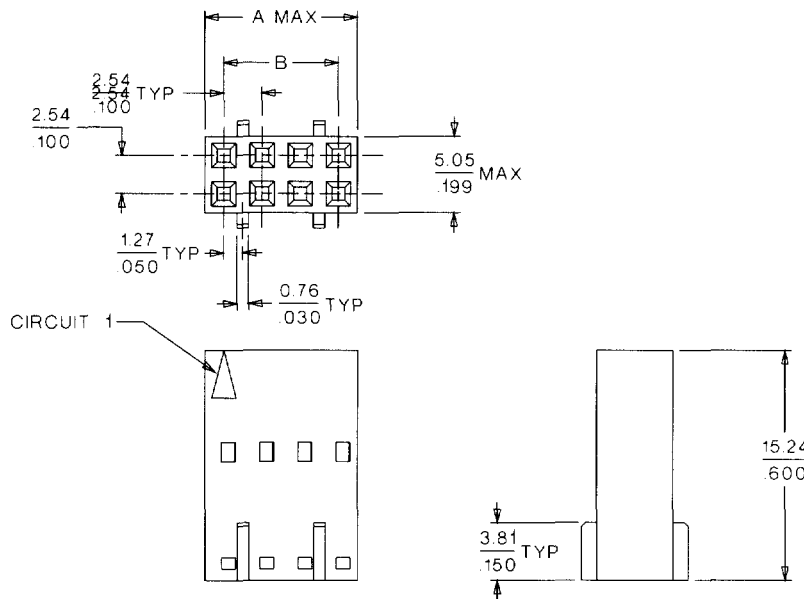
- Sizes 4 to 54 circuits
- Designed to be used within 70013 dual row interim clip as a connector assembly or 70022 dual row panel mount as a pin assembly
- End-to-end stackable
- Back ribs maintain position of connector housings in interim clip and panel mount, and prevent lateral movement when another housing is removed

**Physical**

Housing: Black glass-filled polyester, UL 94V-0  
Temperature: -40 to +120°C

**Reference Information**

Product Specification: PS-70058  
Packaging: Bag  
UL File No.: E29179  
CSA File No.: LR19980  
Mates With: 70013 and 70022  
Use With: 70021, 70058 and 71851 crimp terminals  
Designed In: Inches



Delivered on a carrier with 20 pieces per strip.

Actual Size  Universal Polarizing Pin  
40713-1  
Order No. 15-04-0292

**ORDERING INFORMATION AND DIMENSIONS**

Circuits	Order No.	Dimension	
		A	B
4	• 22-55-2043	5.05 (.199)	2.54 (.100)
6	• 22-55-2063	7.59 (.299)	5.08 (.200)
8	• 22-55-2083	10.13 (.399)	7.62 (.300)
10	• 22-55-2103	12.67 (.499)	10.16 (.400)
12	• 22-55-2123	15.21 (.599)	12.70 (.500)
14	• 22-55-2143	17.75 (.699)	15.24 (.600)
16	• 22-55-2163	20.29 (.799)	17.78 (.700)
18	• 22-55-2183	22.83 (.899)	20.32 (.800)
20	• 22-55-2203	25.37 (.999)	22.86 (.900)
22	• 22-55-2223	27.91 (1.099)	25.40 (1.000)
24	• 22-55-2243	30.45 (1.199)	27.94 (1.100)
26	• 22-55-2263	32.99 (1.299)	30.48 (1.200)
28	• 22-55-2283	35.53 (1.399)	33.02 (1.300)

Circuits	Order No.	Dimension	
		A	B
30	• 22-55-2303	38.07 (1.499)	35.56 (1.400)
32	• 22-55-2323	40.61 (1.599)	38.10 (1.500)
34	• 22-55-2343	43.15 (1.699)	40.64 (1.600)
36	• 22-55-2363	45.69 (1.799)	43.18 (1.700)
38	• 22-55-2383	48.23 (1.899)	45.72 (1.800)
40	• 22-55-2403	50.77 (1.999)	48.26 (1.900)
42	• 22-55-2423	53.31 (2.099)	50.80 (2.000)
44	• 22-55-2443	55.85 (2.199)	53.34 (2.100)
46	• 22-55-2463	58.39 (2.299)	55.88 (2.200)
48	• 22-55-2483	60.93 (2.399)	58.42 (2.300)
50	• 22-55-2503	63.47 (2.499)	60.96 (2.400)
52	• 22-55-2523	66.01 (2.599)	63.50 (2.500)
54	• 22-55-2543	68.55 (2.699)	66.04 (2.600)

• US Standard Product, available through Molex franchised distributors