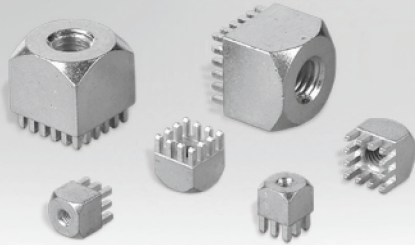


Bushes

with Pin-Plate Circumference



Dimensions (mm)

Power Elements							
Order Code	Four corners a (mm)	b (mm)	c (mm)	e	Pins	Format Type	Type
746 114 8	7	9.5	3.5	M 2.5	8	E	Bush
746 108 6	9	9.5	3.5	M 4	12	F	Bush
746 040 8	9	9.5	3.5	M 5	12	F	Bush
746 109 0	16	17	3.5	M 8	20	H	Bush
746 106 0	16	21	3.5	M 10	20	H	Bush

Dimensions

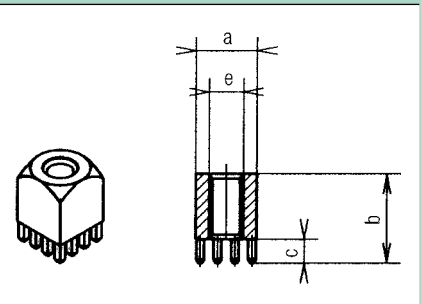


Illustration of hole E

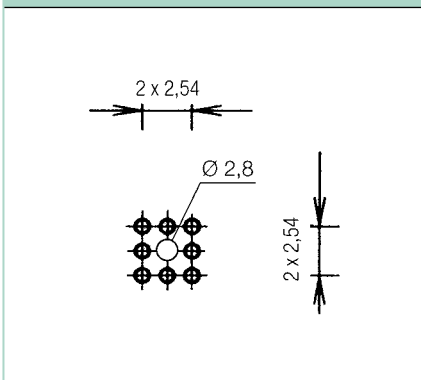


Illustration of hole F

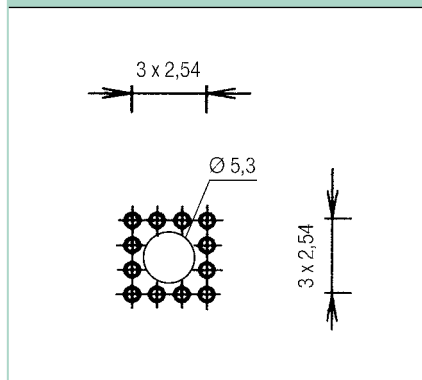


Illustration of hole H

