

RED INDICATES ORIGINAL

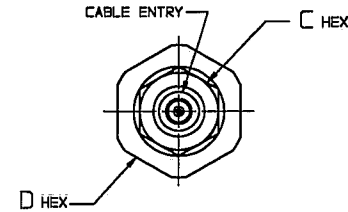
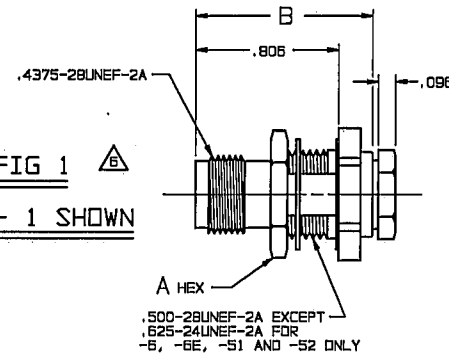
DWG SIZE
C

DATA CONTAINED IN THIS DOCUMENT IS PROPRIETARY TO TROMPETER ELECTRONICS, INC. AND SHALL NOT BE DISCLOSED, COPIED OR USED FOR PROCUREMENT OR MANUFACTURE WITHOUT EXPRESS WRITTEN PERMISSION.

REV		ED		DESCRIPTION	1-0173		SH 1
					DWN	APPROVED	DATE
U	1045B			REVISED NOTE 3; DELETED DASH NUMBERS WITH U' PREFIX; SH 2 ADDED NOTES 3 AND 4	DKC	<i>[Signature]</i>	12/1/93

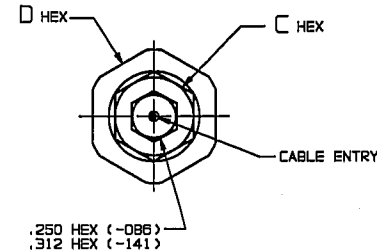
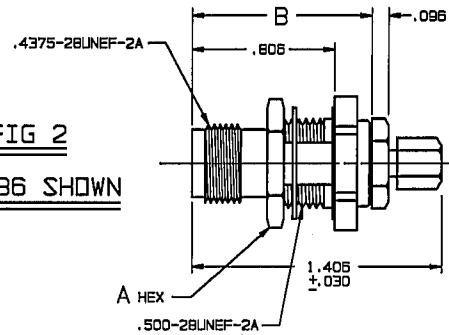
DASH NO	FIG	CABLES ACCOMMODATED	A HEX	B DIM	C HEX	D HEX	E DIM	F DIA	ASSEMBLE PER
-1		RG-5B ESSEX 621-715							
-2		RG-5B							
-2A		BELDEN 9279							
-2B		W.E.CO. 730A							
-3	1,3	RG-223	.625	1.000	.437	.687	.221 .218	.510 .505	
-3A		RG-55							
-4		RG-122 BELDEN 621B							
-5		RG-174 RG-187							
-5A		RG-196							
-5B		HEWLETT-PACKARD 8120-1107							
-6	1	BELDEN 9231	.750	1.030	.500	.750	.284 .281	.635 .630	TAI-101
-6E		RG-5 RG-6							
-21		RG-303							
-22		RG-180							
-31		GRUMMAN GCB75GP1 RG-187 DBL SHLD							
-34	1,3	BELDEN 622B	.625	1.000	.437	.687	.221 .218	.510 .505	
-36		275-3991 MICRODOT 616-569 AMPEX							
-37		810 RAYCHEM							
-41		RG-304 9248 BELDEN							
-44		BRAND-REX B749 GDRE C08C032							
-51	1	B8281 BELDEN	.750	1.030	.500	.750	.284 .281	.635 .630	
-52		B9120 BELDEN							
-53	1,3	B9555 BELDEN							
-63		734A, AT&T	.625	1.000	.437	.687	.221 .218	.510 .505	
-086	2	RG-405							TAI-130
-141		RG-402							

FIG 1
- 1 SHOWN



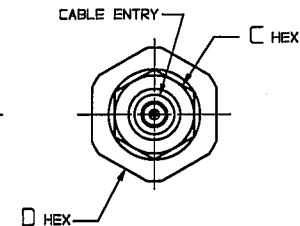
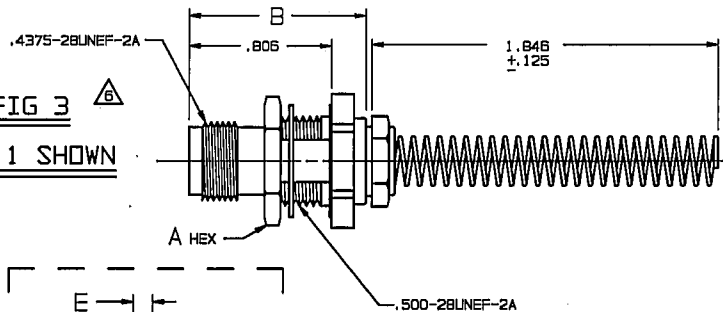
.500-28UNEF-2A EXCEPT
.625-24UNEF-2A FOR
-6, -6E, -51 AND -52 ONLY

FIG 2
- .086 SHOWN



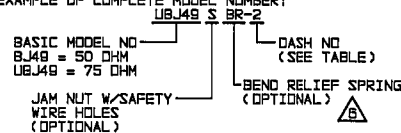
1.405
±.030
.500-28UNEF-2A

FIG 3
- 1 SHOWN

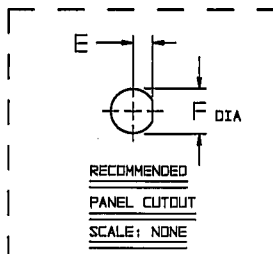


△ IF BEND RELIEF SPRING REQUIRED (FIG 3)
ADD SUFFIX "BR" TO MODEL NO (NOT AVAILABLE
WITH CABLE GROUPS -6, -6E, -51, -52, -63, -086, -141)

5. FEMALE TYPE TNC COAXIAL BULKHEAD JACKS, BOTH 50 & 75 OHM VERSIONS
4. MAX PANEL THK .218
3. EXAMPLE OF COMPLETE MODEL NUMBER:



2. FINISH: TFS-1A (NICKEL)
1. ALL DIM ARE IN INCHES



INCH	MM
.005	0.13
.030	0.76
.095	2.44
.125	3.18
.218	5.54
.221	5.61
.250	6.35
.281	7.14
.284	7.21
.312	7.92
.437	11.10
.500	12.70
.505	12.83
.510	12.95
.625	15.88
.630	16.00
.635	16.13
.687	17.45
.750	19.05
.806	20.47
1.000	25.40
1.030	26.18
1.406	35.71
1.845	46.89

QTY	DESCRIPTION	PART NUMBER	ITEM
TOL UNLESS SPECIFIED .001 ± .002 ± .005 ± .0000 ± ANGLES	TROMPETER ELECTRONICS, INC.	BJ49/UBJ49 BJ49BR/UBJ49BR	
DWN DKC 12-8-69	MATERIAL	CODE IDENT	DRAWING NO.
CHK <i>[Signature]</i> 12-17-93		14949	1-0173
ENGR			REV
NEXT ASSY	APPR <i>[Signature]</i> 12/11/93	SCALE 2/1	DATE 4/23/70 SHEET 1 OF 2