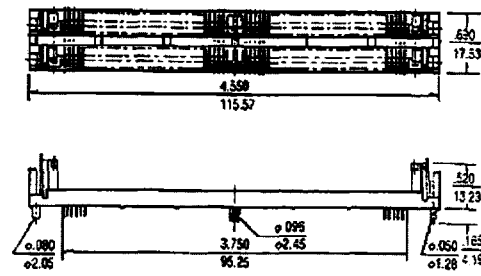
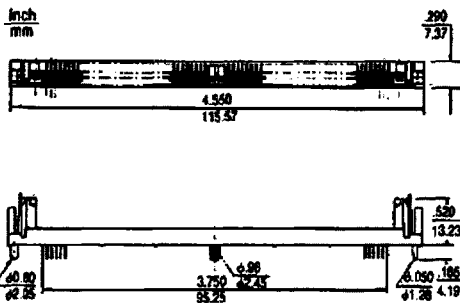
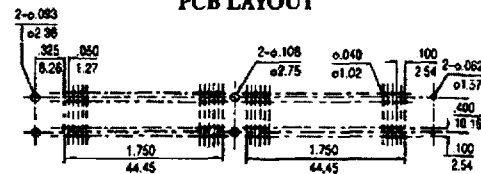
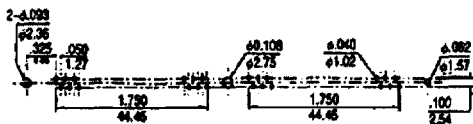


Single-In-Line-Memory-Module-Sockets, half pitch, 1.27 mm



PCB LAYOUT

PCB LAYOUT



Part no.	No. of contacts	Locking	Assembly
A-SM 72 V-TP	1 x 72	Plastic Clips	Vertical
A-SM 144 V-TP	2 x 72 = 144	Plastic Clips	Vertical
A-SM 72 V-TM	1 x 72	Metal Clips	Vertical
A-SM 144 V-TM	2 x 72 = 144	Metal Clips	Vertical
A-SM 72 A-TM	1 x 72	Metal Clips	26° angled

Contacts

CuSn, tinned

Insulators

LCP, UL 94-VO

Specifications

Durability: 25 min.
 Contact force: 200 g min.
 Contact rating: 1 A
 Insulation resistance: 1000 m Ω min.