

SPECIFICATIONS

Mechanical

Contact Retention Force: 0.10kg min.
Durability : 25 Cycles

Electrical

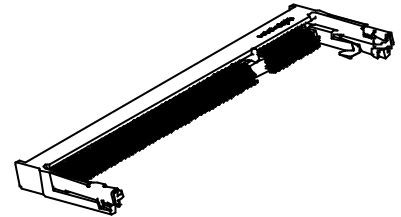
Voltage Rating: 25V
Current Rating: 0.3A
Contact Resistance: 50mW max.
Dielectric Withstanding Voltage: 250V AC/1 min.
Insulation Resistance: 100MW

Physical

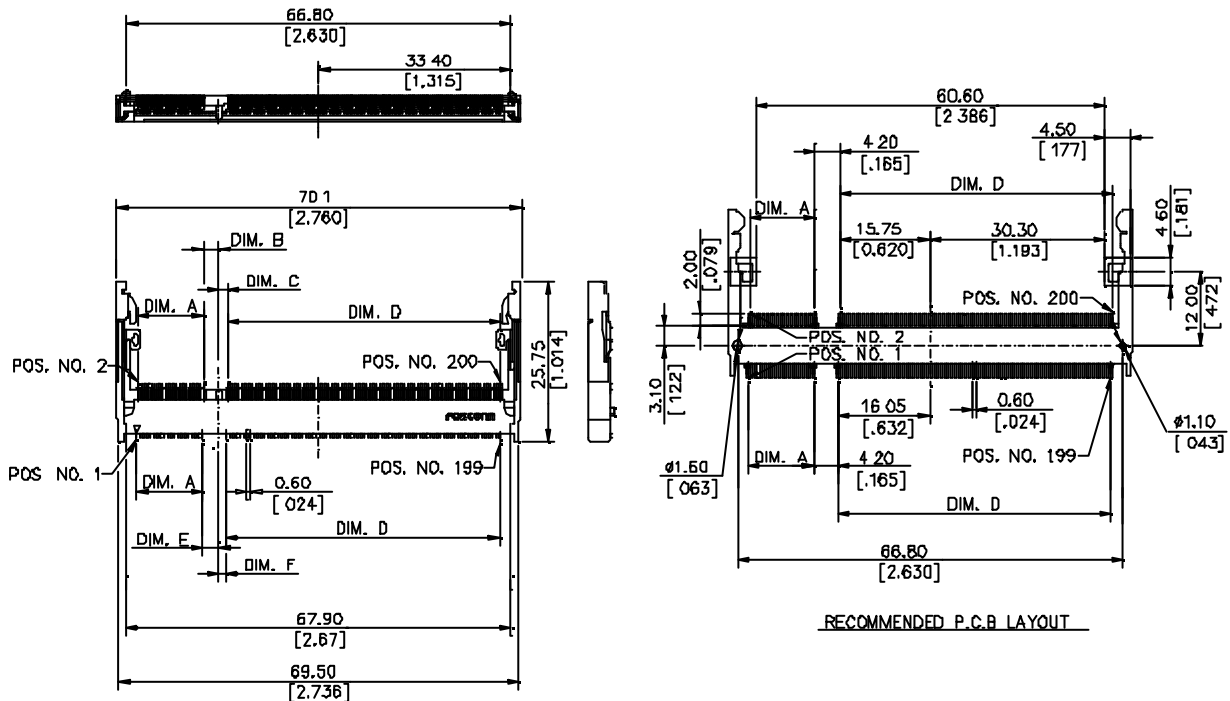
Housing: Thermoplastic, UL 94V-0 rated in Ivory Color
Contact: Copper alloy
Plating: See "ORDERING INFORMATION"
Metal Spring: Copper alloy
Operating Temperature: -40 to +85

DDR II SO DIMM Connectort

AS Series
4.0 mm Height SMT Type
0.6mm [0.024"] Pitch
200Pos.



DRAWING



ORDERING INFORMATION

PRODUCT NO.: A S 0 A4 2 6 - N 4 * C - * F

- Memory Module Socket
- Horizontal Type
- Single Row
- No. of Pos. (A4=200 Pos.)
- SMT Type
- Contact Area Plating (6=10u" Gold)
- F=Lead Free
- 1=Hard Tray
- 4=Soft Tray
- 7=Tape Reel
- C=FOR CPBG
- S=Standard Type
- R=Reverse Type
- 4=4.0mm Height
- N=DDR II SO DIMM (Type II)

ASDA426-N4RN-+F	11 40 [.449]	1.80 [.071]	2.40 [.094]
ASDA426-N4SN-+F	47 40 [1.866]	2.70 [.108]	1.50 [.059]
P/N	DIM. D	DIM. E	DIM. F
ASDA426-N4RN-+F	47 40 [1.866]	1.50 [.059]	2.70 [.108]
ASDA426-N4SN-+F	11.40 [.449]	2.40 [.094]	1.80 [.071]
P/N	DIM. A	DIM. B	DIM. C