

TIN LEAD PART NUMBER

Part number:		HM1K51xDP000H6P				
Replace x by (dim-P ±0.10)		(Performance level)				
	ROW-A	ROW-B	ROW-C	ROW-D	ROW-E	STD loading
D =	6.50	6.50	6.50	6.50	6.50	
H =	8.00	8.00	7.25	6.50	6.50	
K =	6.50	8.00	6.50	6.50	6.50	
M =	7.25	7.25	7.25	7.25	7.25	
N =	8.00	8.00	8.00	8.00	8.00	

LEAD FREE PART NUMBER

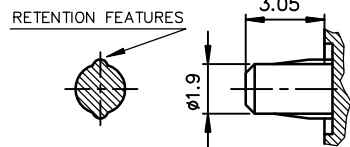
Part number:		HM1K51xDP000H6PLF				
Replace x by (dim-P ±0.10)		(Performance level)				
	ROW-A	ROW-B	ROW-C	ROW-D	ROW-E	STD loading
D =	6.50	6.50	6.50	6.50	6.50	
H =	8.00	8.00	7.25	6.50	6.50	
K =	6.50	8.00	6.50	6.50	6.50	
M =	7.25	7.25	7.25	7.25	7.25	
N =	8.00	8.00	8.00	8.00	8.00	

GENERAL CHARACTERISTICS AND ROHS INFORMATIONS:

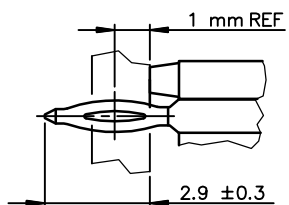
SEE PRODUCT SPECIFICATION GS-12-445

- NOTE-2: INSERTION IN PCB, HANDLING OR BENCH PRESS
- NOTE-4: REAR CENTRAL SUPPORT FOR BETTER ASSY ON PCB
- NOTE-5: PACKAGING IN TRAY + COVER
- NOTE-6: IF SUFFIX "P" IS ADDED IN P/N PACKAGING IS IN TRAYS BUT CONNECTOR MARKING IS WITHOUT "P" EXAMPLE: HM1XXXXXXXXH6P, MARKED HM1XXXXXXXXH6

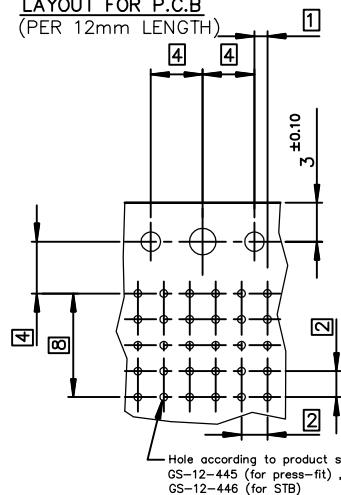
DETAIL OF FORCE-FIT PEGS



DETAIL-1: PRESS-FIT PIN



LAYOUT FOR P.C.B (PER 12mm LENGTH)



Hole according to product spec GS-12-445 (for press-fit), GS-12-446 (for STB)

rev	ecn no	dr	date
D	-	PER	2002/04/09
E	LS05-004	MPE	2005/02/14
F	LS06-0097	LGO	2006/07/12
G	LS07-0184	MLE	2007/07/24
H	DG10-0032	Cenh	2010/01/25
-	-	-	-
-	-	-	-

www.fcconnect.com		surface ISO 1302 ✓	tolerance std ISO 406 ISO 1101	projection	mm
Dr PERICHOT 2001/10/23		TOLERANCES UNLESS OTHERWISE SPECIFIED		size A3	Scale 2.5
Eng PESSON 2001/10/23		ANGULAR	LINEAR	0.X ±0.3	ECN
Chr LEGARE 2001/10/23		0.XX ±2		0.XX ±0.13	Spec ref -
Appr LEGARE 2001/10/23		Product family		0.XXX ±0.051	
FCj		METRAL RA HEADER POWER 5 ROW		dwg no C-8626-0132	
title WIDE BODY/ PRESS-FIT		catalog no -		Rev. H	
		CUSTOMER sheet 1 of 1			

European Views



Copyright FCI.