



TAI-SAW TECHNOLOGY CO., LTD.

No. 3, Industrial 2nd Rd., Ping-Chen Industrial District,
Taoyuan, 324, Taiwan, R.O.C.

TEL: 886-3-4690038 FAX: 886-3-4697532

E-mail: tstsales@mail.taisaw.com Web: www.taisaw.com

Approval Sheet For Product Specification

Issued Date: Apr, 29, 2009

Product Name: SAW Filter 1210 MHz SMD 3.0X3.0 mm

TST Parts No.: TA1029A

Customer Parts No.: _____

Company: _____
Division: _____
Approved by : _____
Date: _____

Checked by: _____ Bob Chau *Bob Chau*

Approval by: _____ Francis Chen *Francis Chen*

Date: _____ 4, 29, 2009



TAI-SAW TECHNOLOGY CO., LTD.

No. 3, Industrial 2nd Rd., Ping-Chen Industrial District,
Taoyuan, 324, Taiwan, R.O.C.

TEL: 886-3-4690038 FAX: 886-3-4697532

E-mail: tstsales@mail.taisaw.com Web: www.taisaw.com

SAW Filter 1210 MHz

MODEL NO.:TA1029A

REV. NO.:1

A. MAXIMUM RATING:

1. Input Power Level: 10 dBm
2. DC Voltage : 3V
3. Operating Temperature: -40°C to +85°C
4. Storage Temperature: -50°C to +95°C

RoHS Compliant
Lead free
Lead-free soldering

B. ELECTRICAL CHARACTERISTICS:

Terminating source impedance (differential) : $Z_s = 150 \ \Omega \ // \ 82 \text{ nH}$

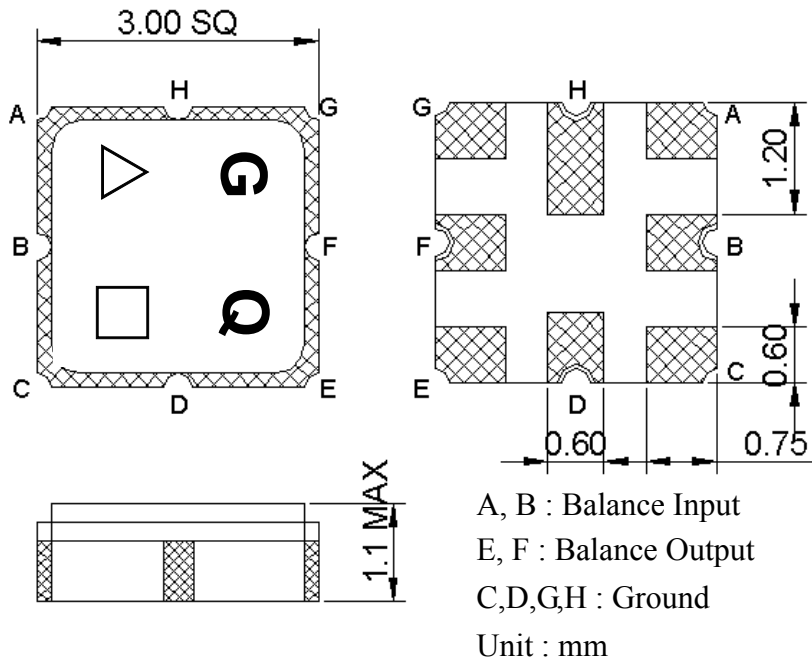
Terminating load impedance (differential) : $Z_L = 150 \ \Omega \ // \ 82 \text{ nH}$

Item	Unit	Min.	Typ.	Max.	Note
Center Frequency Fc	MHz	-	1210	-	-
Bandwidth at -2 dB	MHz	56	74	-	-
Insertion Loss in 1180~1240 MHz	dB	-	3.7	5	-
Amplitude ripple (1180 MHz ~ 1240 MHz)	dB	-	1	2	-
Phase error (1180 MHz ~ 1240 MHz) (3)	deg	-	3.5	5	-
I/O VSWR (1180 MHz ~ 1240 MHz)		-	1.8	2.5	-
CMDR (1180 MHz ~ 1240 MHz)	dB	22	35	-	-
Attenuation (1)					
50 ~ 960 MHz	dB	32	35	-	-
960 ~ 1120 MHz	dB	40	43	-	-
1315 ~ 2500 MHz	dB	40	43	-	-
2500 ~ 3200 MHz	dB	35	39	-	-
3200 ~ 6000 MHz	dB	30	33	-	-

Notes :

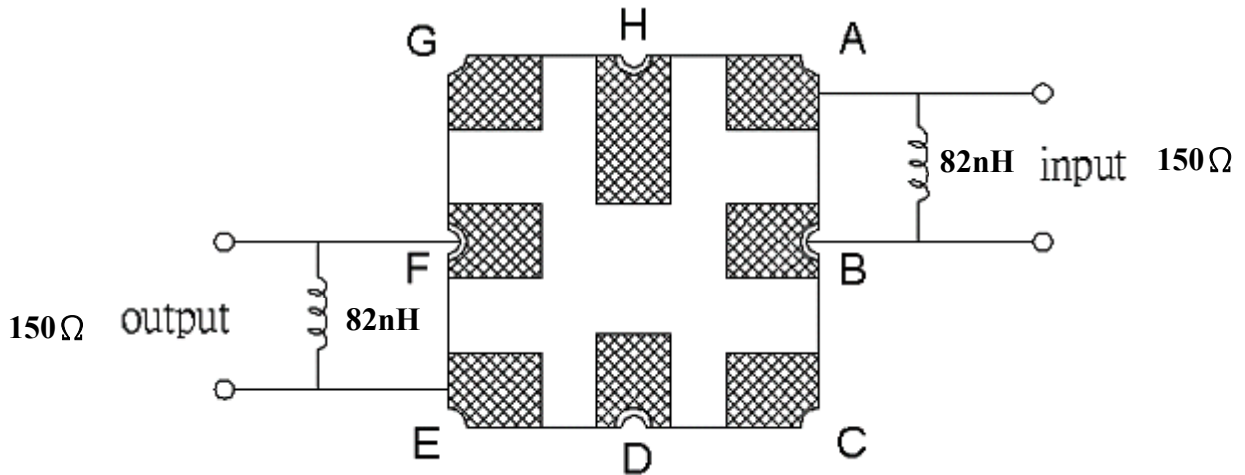
- (1) The amplitude reference is insertion loss at Fc.
- (2) The amplitude ripple is defined as the max. level – min. level over any 36 MHz block of the given bandwidth.
- (3) The phase error is measured over any 36 MHz block of the given bandwidth.

C.OUTLINE DRAWING:

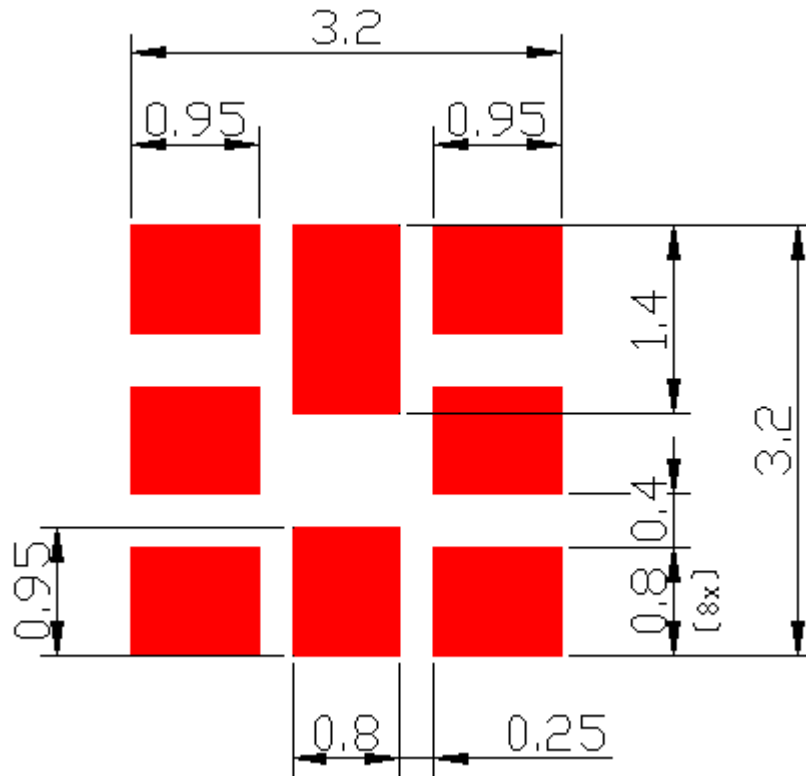


△ : Year Code (2006->6, ..., 2009->9)
 □ : Date Code (W01->A,...W26->Z,...W52->z)

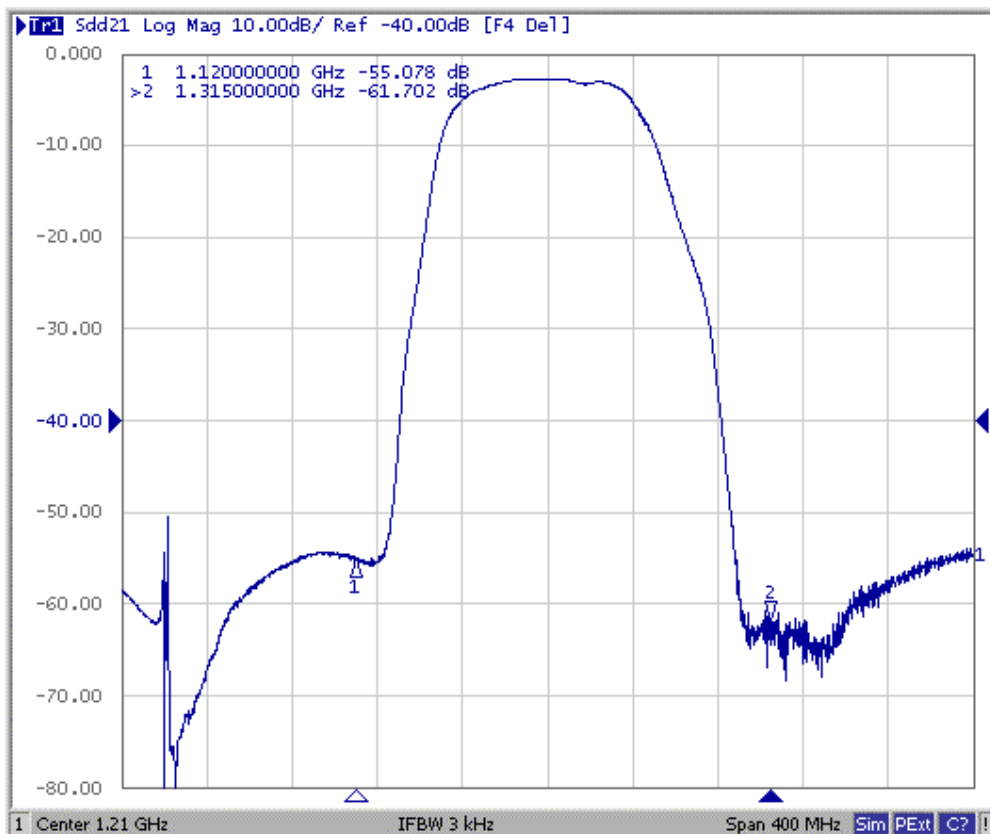
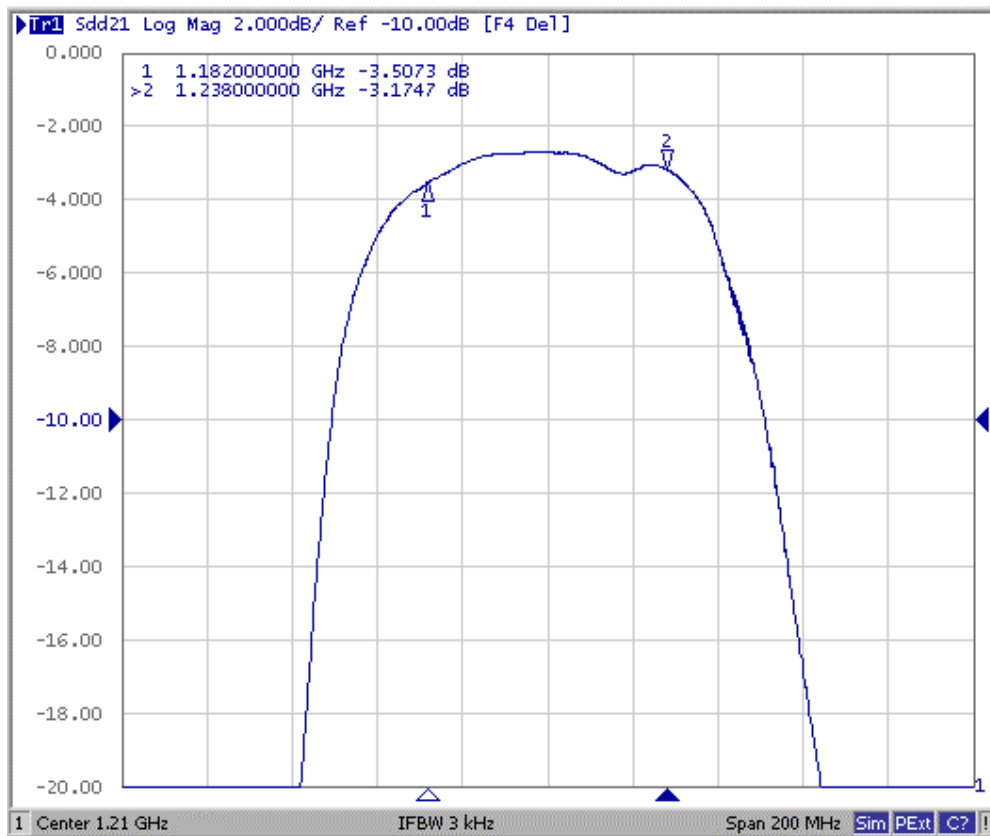
D. MEASUREMENT CIRCUIT:

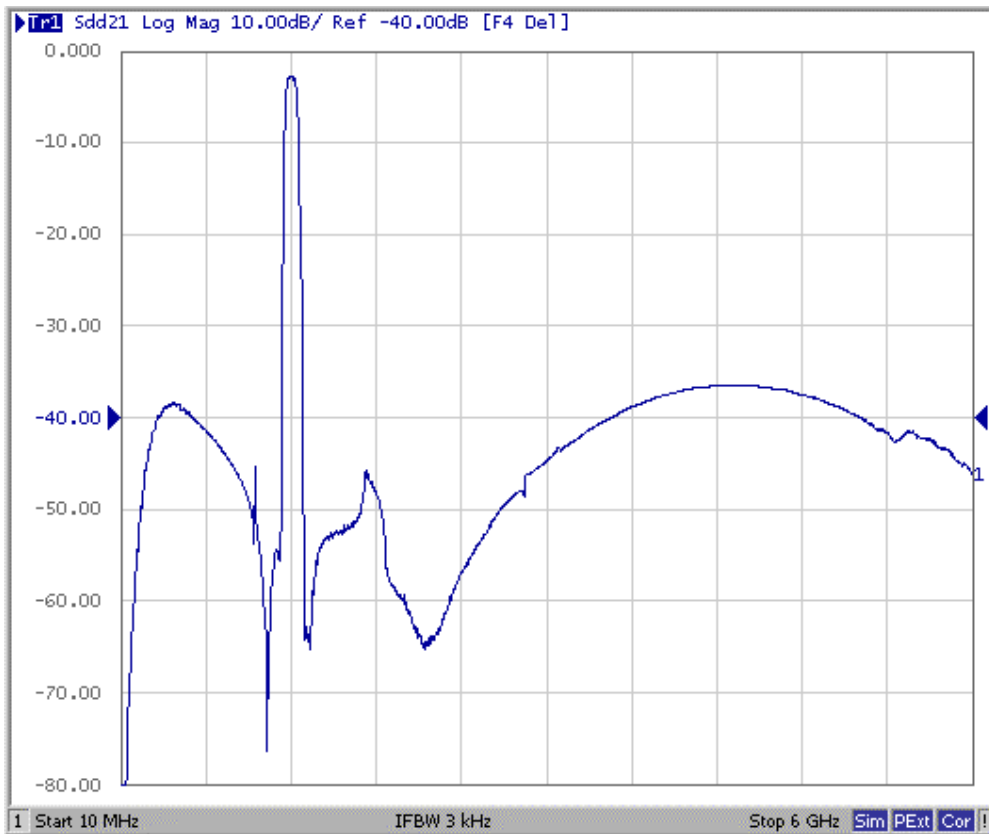


E. PCB Footprint:



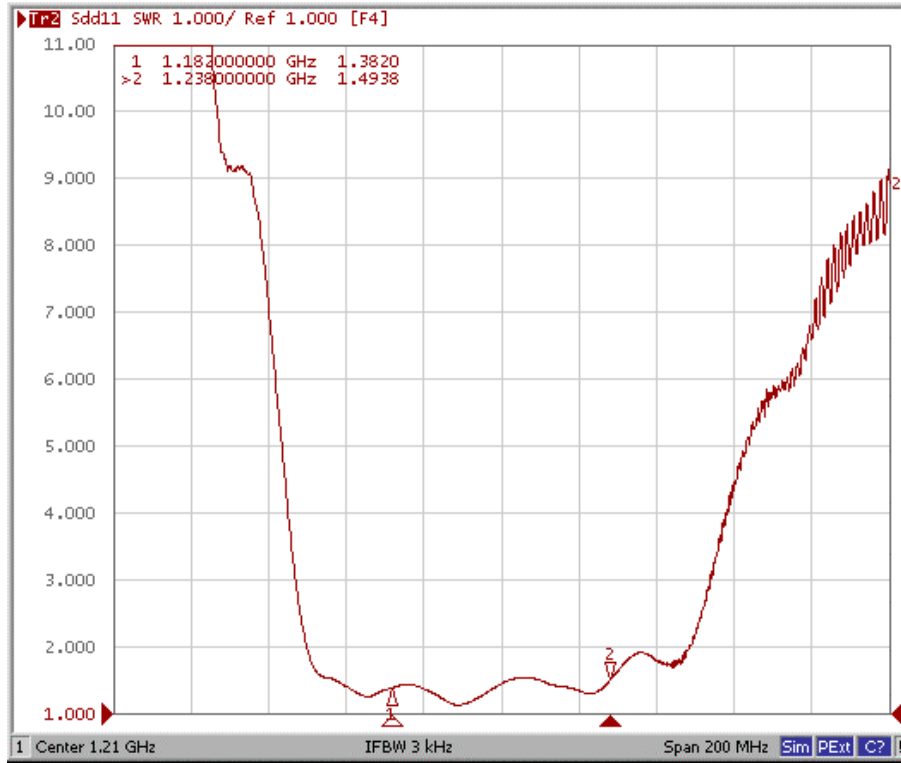
F. Frequency Characteristics :



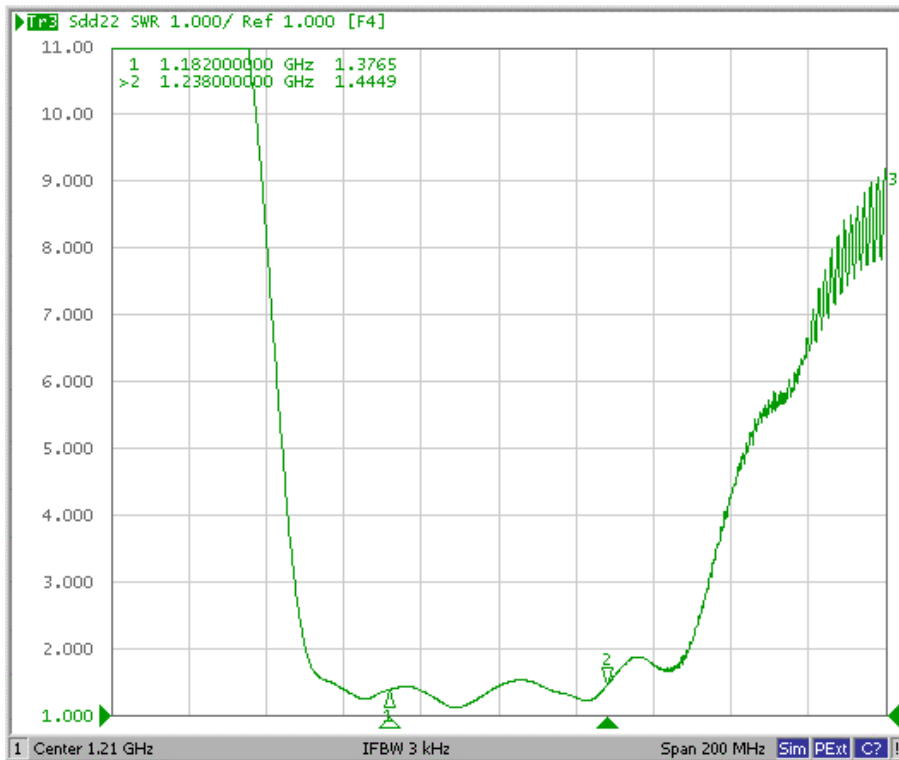


Reflection Functions :

S11



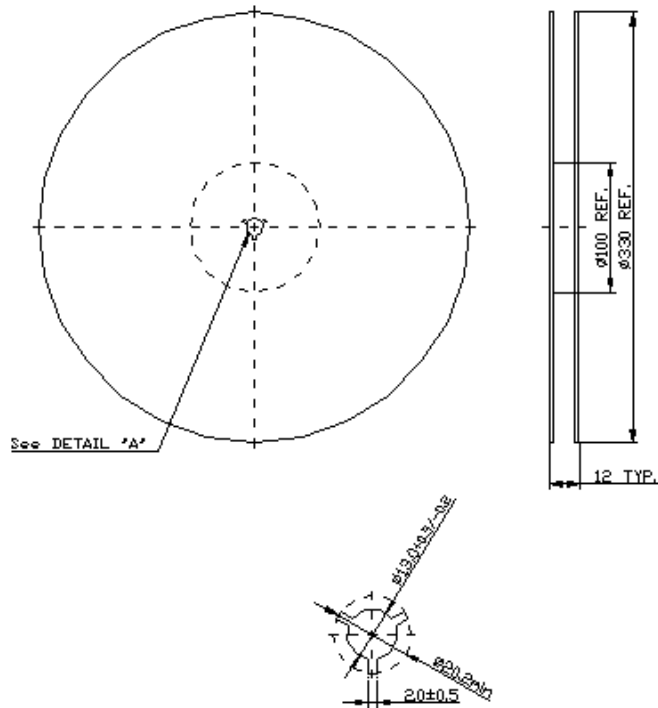
S22



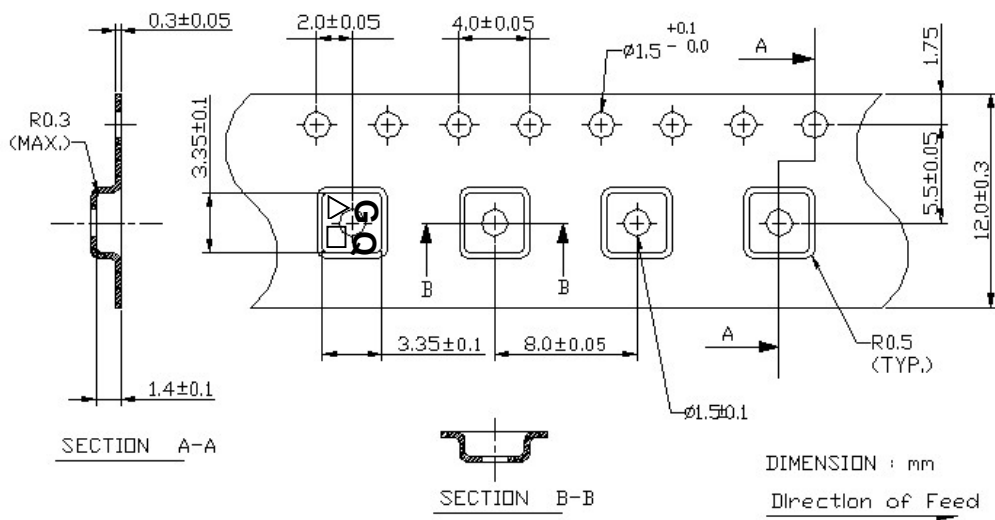
G. PACKING:

1. REEL DIMENSION

(Reel Count : 7"=1000 ; 13"=3000)



2. TAPE DIMENSION



H. RECOMMENDED REFLOW PROFILE :

