

# TERMINATIONS

2.9mm, up to 26.5 GHz, 2 Watts

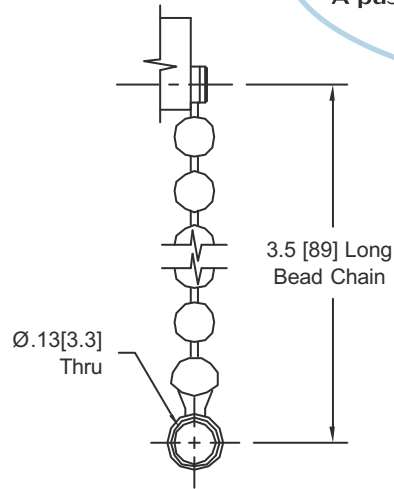
## SPECIFICATIONS:

Models: TK260M, TK260F, TK260MC, TK260FC

**RoHS**  
Compliant

<b>Electrical:</b>	
Frequency Range	DC - 26.5 GHz
VSWR	1.40:1 Max.
Impedance	50 Ohms
Input Power	2 Watts Avg. @ +25°C Derated Linearly to 0.5 Watts @ +125°C
Operating Temp. Range	-65°C to +125°C
<b>Mechanical:</b>	
2.9mm Connectors	Passivated Stainless Steel
Mates both Mechanically and Electrically with all SMA, K* and 3.5mm Series Connectors	
Conductors	Gold Plated Beryllium Copper
Bead Chain	Passivated Stainless Steel

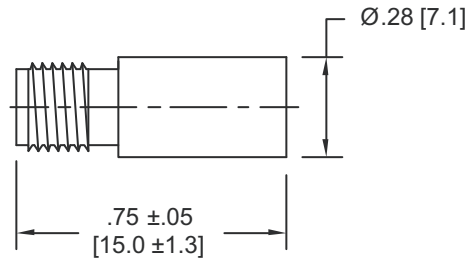
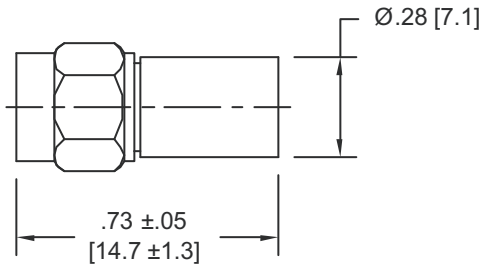
\*K is a Trademark of Anritsu/Wiltron



CHAIN DETAIL

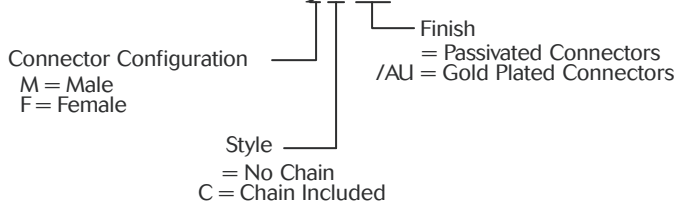
Model Number: **TK260M**  
2.9mm Male Connector

Model Number: **TK260F**  
2.9mm Female Connector



### HOW TO ORDER:

Model Number: **TK260YZ/FF**



### Ordering Examples:

Model Number: **TK260MC**  
DC - 26.5 GHz; 2.9mm Male; Chain Included

Model Number: **TK260F**  
DC - 26.5 GHz; 2.9mm Female; No Chain

Note: Dimensions in Brackets are Expressed in Millimeters and are for Reference Only. Design, specifications are subject to change without notice. Contact factory for technical specifications before purchasing and/or use.

5214: REV -



Aeroflex / Inmet, Inc. • 300 Dino Drive, Ann Arbor, MI 48103 • U.S.A.  
888-244-6638 or 734-426-5553 • FAX: 734-426-5557  
www.aeroflex-inmet.com • inmet-sales@aeroflex.com