

## SINGLE BREAK, COMMERCIAL & MILITARY GRADES

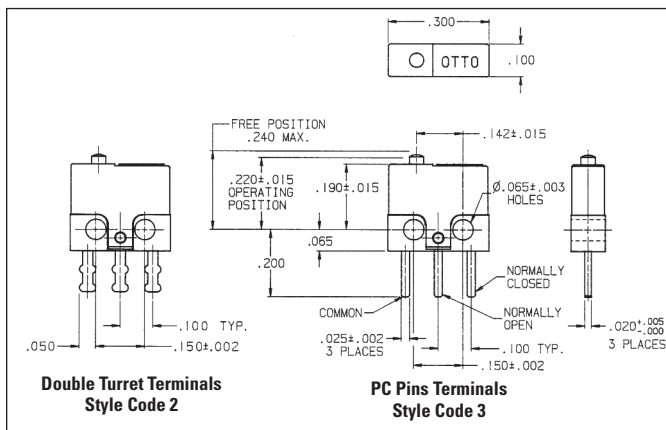
The B1 series basic switches are ultra-subminiature in size, designed to reliably switch low level logic signals as well as up to 2 amps switching capacity for a minimum of 25,000 cycles. Mechanical life expectancy is in excess of 1 million cycles.

The molded housing is rugged and structurally stable. The terminals are molded-in and sealed against solder flux entering the switch. The terminals are available in a choice of double turret solder style and 0.020" x 0.025" PC pins.

The B1 series is also available with integral lever actuators as B1-5 series.

### Features:

- **Ultra-compact: only 0.300" w x 0.250" h x 0.100" thk**
- **1 million cycle life**
- **Low level logic switching capability**
- **Designed to meet requirements of MIL-PRF-8805/94**
- **Available in Commercial & Military grades**
- **Choice of solder or PC molded-in terminals**
- **Precision operating points**



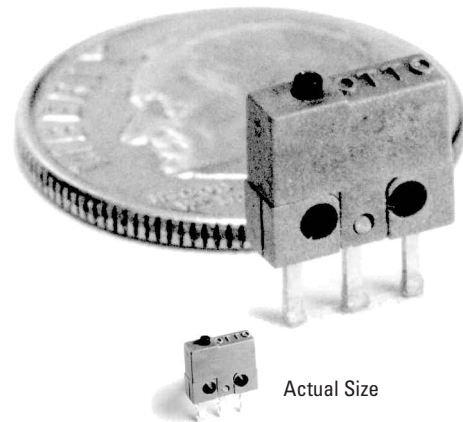
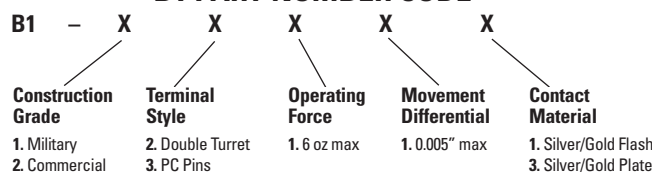
### ORDERING INFORMATION:

#### B1 Basic

Select the OTTO B1 basic switch to match your specific circuit and mechanical requirements. To order, specify your requirement using the OTTO Part Number Code shown below.

**Example:** B1-12111 specifies Military grade construction, double turret terminals, 6 oz max operating force, default integer and gold flash silver contacts.

#### B1 PART NUMBER CODE



Standard Characteristics/Ratings:		
<b>ELECTRICAL RATINGS:</b>		
<b>Load</b>	<b>Sea Level @ 28VDC or 115VAC, 60Hz</b>	<b>50,000 feet @ 28VDC</b>
Resistive	2A	2A
Inductive*	0.5A	0.2A
DWV	1050Vrms	400Vrms
Low Level	30mV max and 10mA max	30mV and 10mA max
*L/R = 0.026		
<b>Electrical Life:</b>	25,000 cycles	
<b>Mechanical Life:</b>	1 million cycles	
<b>Seal:</b>	Unsealed	
<b>Operating Temp Range:</b>	-55°C to +125°C	
<b>Operating Force:</b>	6 oz max	
<b>Release Force:</b>	0.7 oz min	
<b>Operate Point:</b>	0.220 +/- 0.015 inches from mounting holes	
<b>Overtravel:</b>	0.003 inches min	
<b>Movement Differential:</b>	0.002 inches nominal, 0.005 inches max	
<b>Pretravel:</b>	0.015 inches max	
<b>MATERIALS:</b>		
<b>Case:</b>	Thermoset, blue	
<b>Cover:</b>	Thermoplastic, blue	
<b>Button:</b>	Thermoplastic, black	
<b>Terminals:</b>	Brass, gold over nickel	
<b>Contacts:</b>	Stationary: Silver with gold flash Moveable: Silver with gold plate	
<b>Terminal Hardware:</b>	None provided	
<b>Mounting Hardware:</b>	None provided	