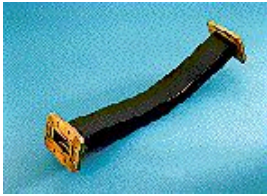


# Product Specifications

## F137CCG4

Flexible Twist for WR137, 5.6–6.2 GHz, with interface types CPR137G and CPR137G, 1000 mm



## CHARACTERISTICS

### Electrical Specifications

---

Operating Frequency Band	5.6 – 6.2 GHz
Attenuation	0.09 db/ft   0.30 db/m
Average Power	2000 W
Peak Power	500.0 kW
VSWR	1.05

### General Specifications

---

Component	Flexible Twist
Waveguide Size	WR137   WG14   R70
Interface	CPR137G
Interface 2	CPR137G
Length	1000 mm   39 in

### Mechanical Specifications

---

Maximum Twist	214.00 °/m   65.00 °/ft
Minimum Bend Radius, Multiple Bends (E Plane)	102.00 mm   4.00 in
Minimum Bend Radius, Multiple Bends (H Plane)	204.00 mm   8.00 in
Pressurization, maximum	30 psi   205 kPa

**Component**

**Interface**

**Interface 2**

[www.commscope.com/andrew](http://www.commscope.com/andrew)

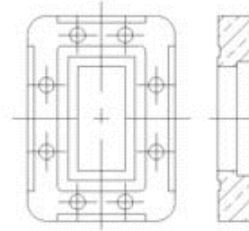
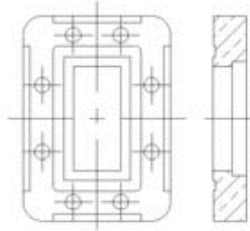
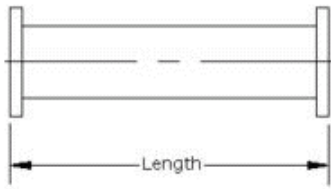
©2011 CommScope, Inc. All rights reserved.

All trademarks identified by ® or ™ are registered trademarks or trademarks, respectively, of CommScope. All specifications are subject to change. See [www.commscope.com/andrew](http://www.commscope.com/andrew) for the most current information.

page 1 of 2  
6/9/2011

# Product Specifications

F137CCG4



## Regulatory Compliance/Certifications

### Agency

RoHS 2002/95/EC

China RoHS SJ/T 11364-2006

ISO 9001:2008

### Classification

Compliant by Exemption

Above Maximum Concentration Value (MCV)

Designed, manufactured and/or distributed under this quality management system



[www.commscope.com/andrew](http://www.commscope.com/andrew)

©2011 CommScope, Inc. All rights reserved.

All trademarks identified by ® or ™ are registered trademarks or trademarks, respectively, of CommScope. All specifications are subject to change. See [www.commscope.com/andrew](http://www.commscope.com/andrew) for the most current information.

page 2 of 2  
6/9/2011