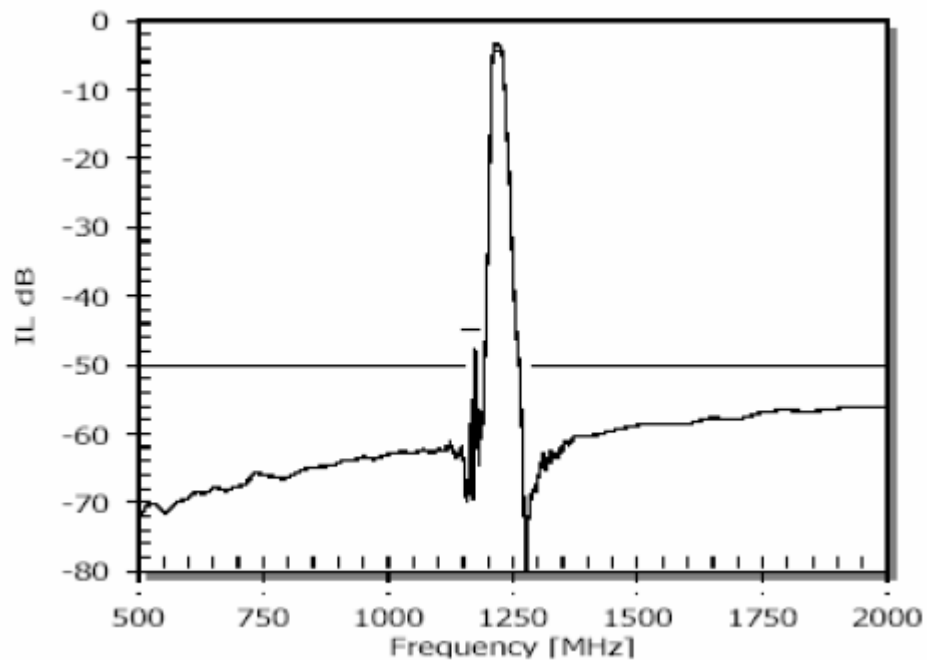
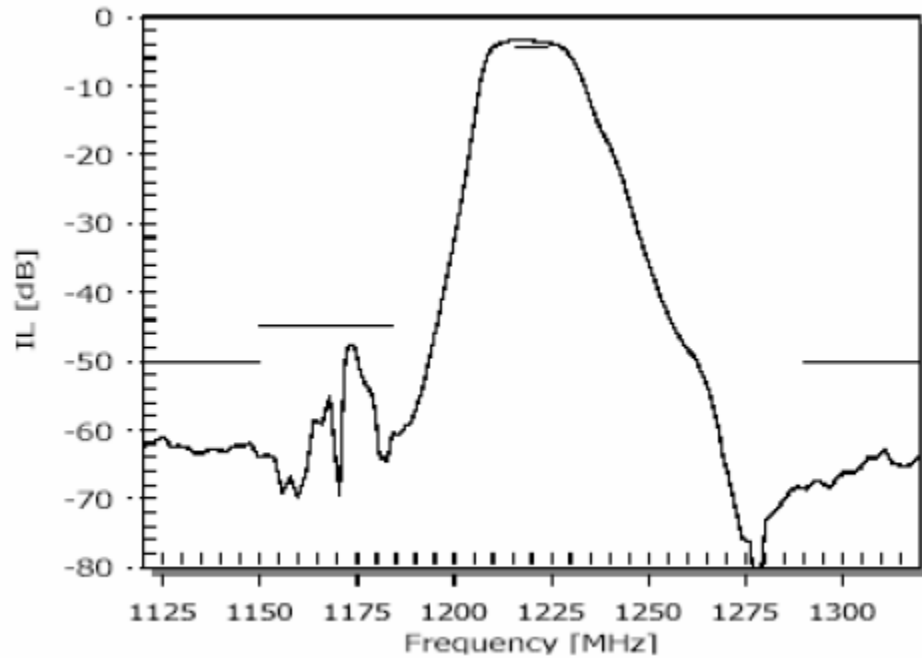




DESCRIPTION

Miniature 1220 MHz SAW Filter in a 3.8 x 3.8 mm surface mount package which can be used as the IF filter in cable modem application.

TYPICAL PERFORMANCE





MAXIMUM RATINGS

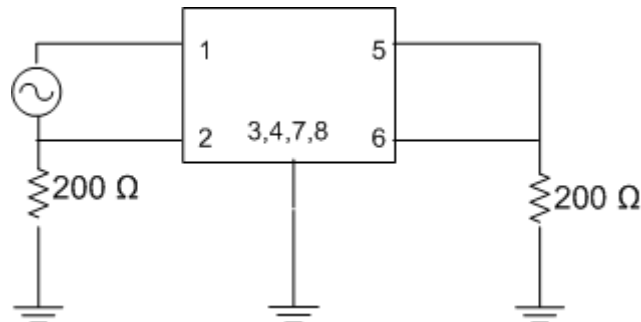
Parameter	Min	Max	Units
Operating Temperature Range	-85	+85	°C
Storage Temperature Range	-40	+100	°C
Max. D. C. Voltage between Each Terminal		5	V

SPECIFICATION

Parameter	Min	Typ	Max	Units
Center Frequency F_c		1220		MHz
Bandwidth (3dB)		8		MHz
Insertion Loss			4.9	dB
Passband Amplitude Ripple			1.4	dB
Stopband Rejection, 0 to 1150 MHz	50			dB
Stopband Rejection, 1150 to 1184 MHz	45			dB
Stopband Rejection, 1290 to 2000 MHz	50			dB
Input VSWR			2.0	--
Output VSWR			2.0	--
Source/Load Impedance	200/200			Ω

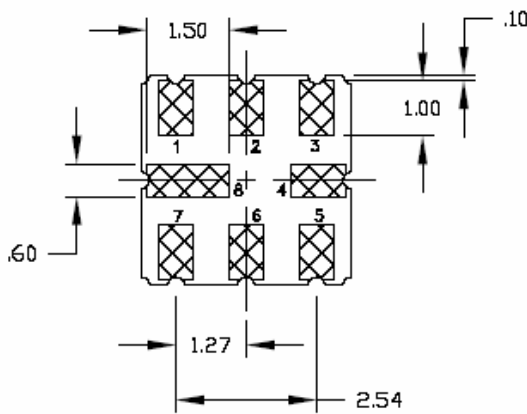
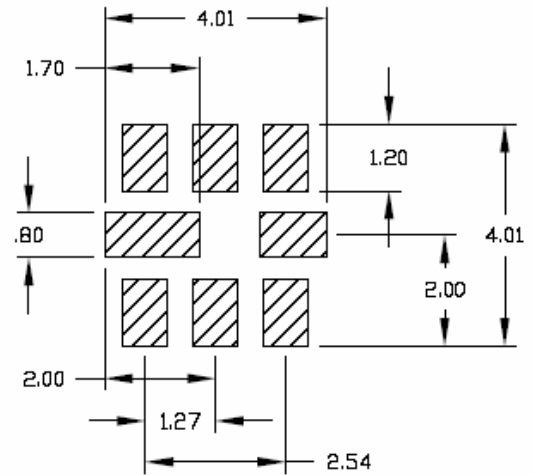
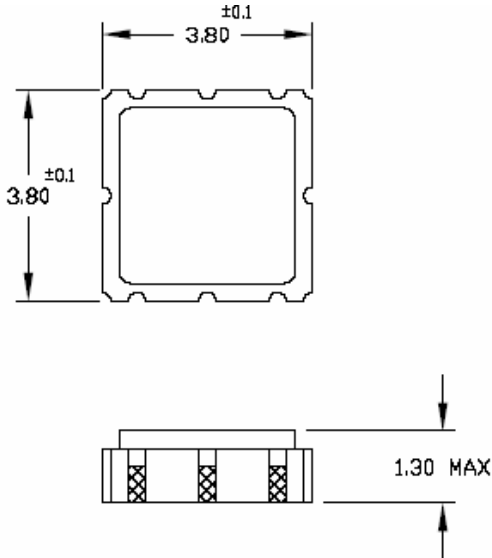
TEST CIRCUIT

200 Ohm balanced
No matching circuit required





PACKAGE OUTLINE AND SUGGESTED PCB FOOTPRINT



PIN CONFIGURATION	
1	BALANCE INPUT
2	BALANCE INPUT
3	GROUND
4	PACKAGE GROUND
5	BALANCE OUTPUT
6	BALANCE OUTPUT
7	GROUND
8	PACKAGE GROUND

NOTES:

- DIMENSIONS ARE IN MM
UNLESS OTHERWISE SPECIFIED
ALL TOLERANCES ARE ±.15

All specifications are believed to be accurate and reliable. However, ICS reserves the right to make changes without notice.
© 2005 Integrated Circuit Systems, Inc. All rights reserved.